

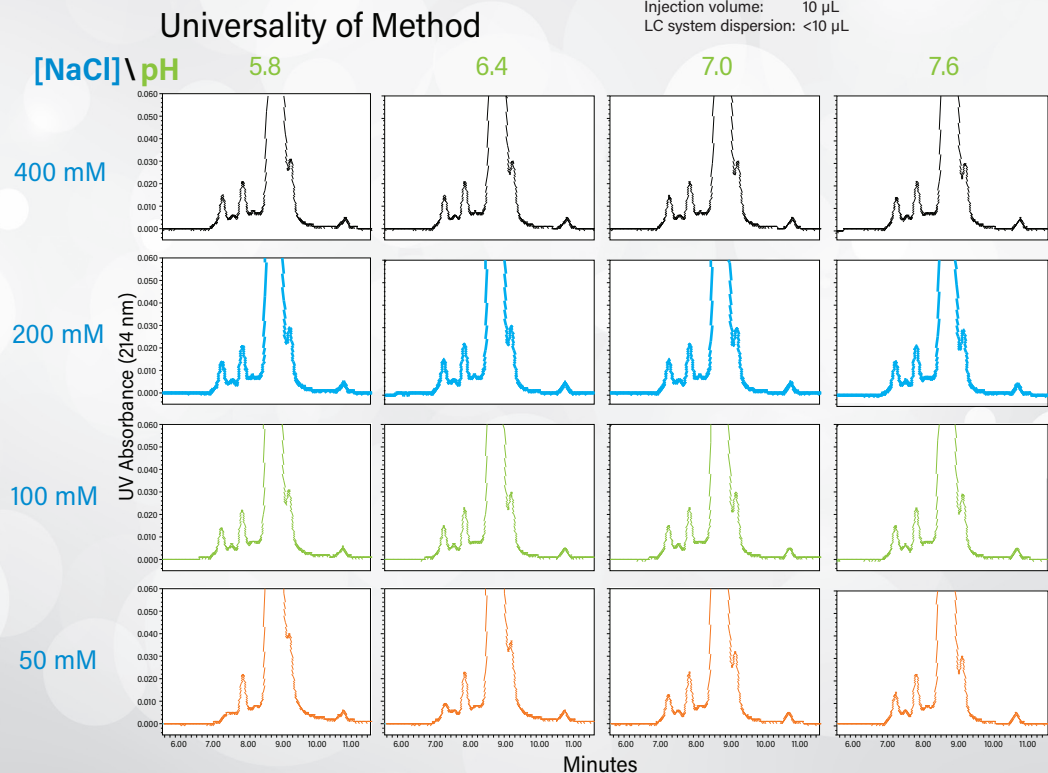
What can MaxPeak Premier Columns do for your protein SEC analysis?

Ensure MaxPeak Premier performance for ALL separations



MaxPeak™ Premier Columns utilize MaxPeak High Performance Surfaces that are designed to increase analyte recovery, sensitivity, and reproducibility by minimizing analyte/surface interactions that can lead to sample losses.

Column: XBridge™ Premier SEC 250 Å, 2.5 µm, 7.8 x 300 mm
 Mobile phase: AutoBlend™ Plus (phosphate, NaCl, Empirical)
 Flow rate: 0.75 mL/min
 Column temp.: 25 °C
 Sample: Rituximab @ 10 mg/mL
 Injection volume: 10 µL
 LC system dispersion: <10 µL



- Precision chemistry for particles and surfaces
- Progressive, integrated technologies
- Protection from RISK
- Performance without sacrifice for ALL analytes
- Corrosion resistance to prevent column and MS fouling leachates
- Hybrid inorganic/organic LC surfaces to protect metal-sensitive analytes



Addressing the complexity of SEC separations, so you can:

Achieve less non-desired ionic and hydrophobic interactions for more reliable results

Reproducibly resolve injected protein sample components that are less than 2x different in size for challenging applications

Use a "platform SEC method" to reduce method development time and cost

Select from 1.7 µm and 2.5 µm particle sizes to address high throughput or LC system limitations

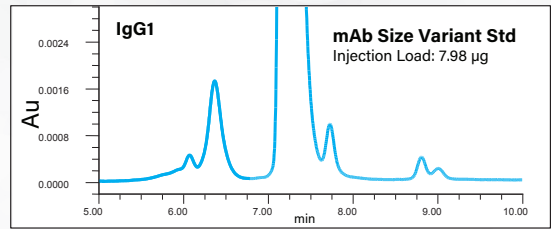
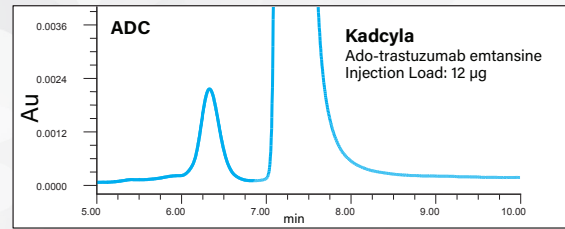
Benefit from columns that are QC-tested with Waters™ mAb Size Variant Standard to ensure batch-to-batch and column-to-column performance

Experience Waters Ethylene-Bridged Hybrid (BEH) SEC particles functionalized with hydroxy terminated polyethylene (PEO)

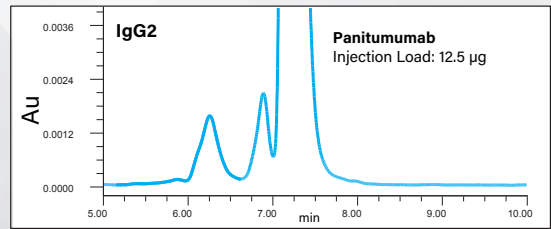
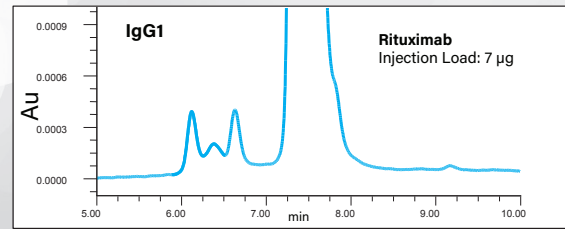
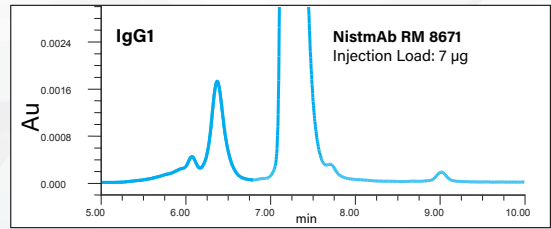
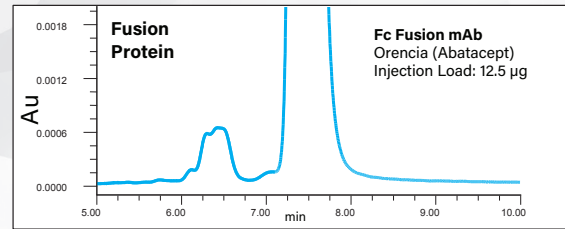
Ordering Information

Description	4.6 x 150 mm	4.6 x 300 mm
ACQUITY Premier Protein SEC 250 Å, 1.7 µm	176005071 (Column and Standard)	176005072 (Column and Standard)
	176004794 (Column, Standard, and Guard)	176004795 (Column, Standard, and Guard)

Classes of therapeutic proteins separated on ACQUITY™ Premier Protein SEC 250 Å, 1.7 µm Column



Column: ACQUITY Premier Protein SEC 250 Å, 1.7 µm
 Dimension: 4.6 x 300 mm
 Flow rate: 0.3 mL/min
 Temp.: 35 °C
 Wavelength: 280 nm
 Mobile phase: 2xPBS (20 mM phosphate, 276 mM NaCl, 5.4 mM KCl pH 7.4)
 Instrument: ACQUITY UPLC™ H-Class Bio
 LC system dispersion: <10 µL



SEC Eluent: 2X PBS

SEC eluent containing phosphate buffered saline (PBS) can deliver excellent size variant component resolution for several classes of proteins.

IgG1 Chimeric
Infliximab
Injection load: 7 µg

Description	4.6 x 150 mm	4.6 x 300 mm	7.8 x 150 mm	7.8 x 300 mm
XBridge Premier Protein SEC 250 Å, 2.5 µm	176005067 (Column and Standard)	176005068 (Column and Standard)	176005069 (Column and Standard)	176005070 (Column and Standard)
	176004790 (Column, Standard, and Guard)	176004791 (Column, Standard, and Guard)	176004792 (Column, Standard, and Guard)	176004793 (Column, Standard, and Guard)

Description	Part Number
mAb Size Variant Standard (160 µg)	186009429
MaxPeak Premier Protein SEC 250 Å, 2.5 µm, 4.6 x 30 mm Guard	186009969

For Method Validation Kit (MVK) part numbers, visit waters.com/MaxPeakColumns.

LEARN MORE >

