

Method Development Guidelines:

Solid Phase Extraction Using ISOLUTE® SAX and ISOLUTE® PE-AX SPE Sorbents for the Extraction of Aqueous Samples

ISOLUTE® Anion Exchange Sorbents:

SAX, PE-AX, NH2 and PSA

The ISOLUTE® family of anion exchange sorbents are used to extract organic anions (acid compounds capable of exhibiting a negative charge) from both aqueous and non-aqueous matrixes. This technical note describes their use for aqueous matrices only. Although extraction using these sorbents is by the same mechanism, each has properties which influence the way they are used.

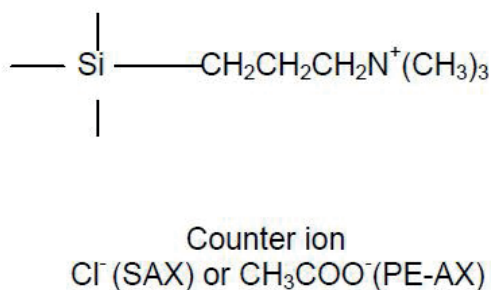


Figure 1. Structure of the quaternary amine of ISOLUTE® SAX and PE-AX anion exchange sorbents.

Anion exchange SPE can be accomplished by strong (permanently charged) or weak (pH -dependent charge) ion exchangers.

ISOLUTE SAX and PE-AX, the strong anion exchangers, are quaternary amines (propyl-trimethyl amine – see figure 1 for structures) and therefore have a permanent positive charge under all pH conditions. Since this amine is tethered to the silica surface through a propyl linkage, these phases have limited non-polar character, and so secondary non-polar interactions with analytes are weak. This means that it may not be necessary to add an organic fraction to the elution solvent, which is often necessary when eluting from more hydrophobic sorbents in order to overcome non-polar retention mechanisms.

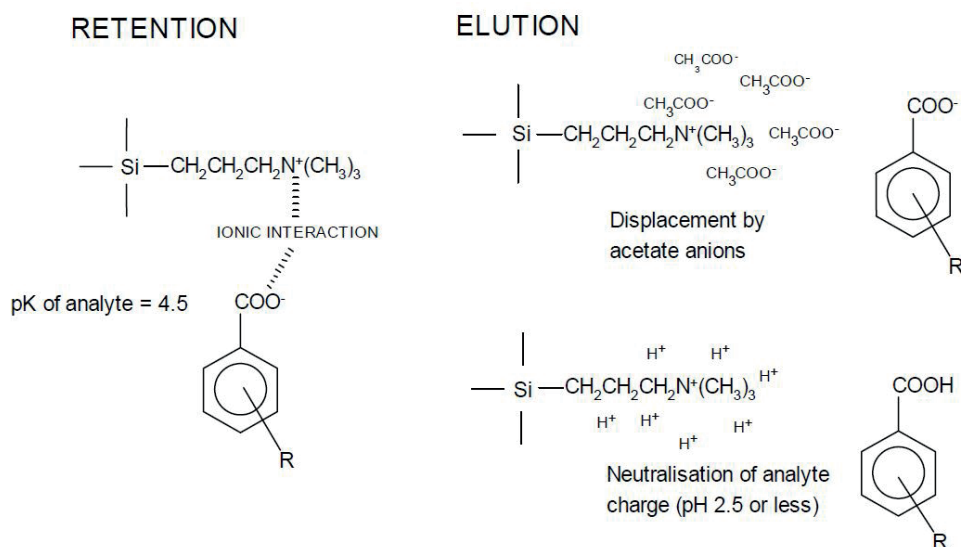
These two phases differ only in that ISOLUTE SAX has a chloride counter ion while ISOLUTE PE-AX has an acetate counter-ion. It is easier to displace an acetate counter ion than a chloride counter ion, and so the extraction of carboxylic acids can be achieved without having to equilibrate the sorbent with a high concentration acetate buffer.

ISOLUTE NH₂ (an aminopropyl phase) is a weak anion exchanger with a pK_a of 9.8. It is used for the extraction of anions that exhibit a negative charge at pH 7.8 or lower. The charge on the sorbent is neutralized at pH 11.8 or higher. This can be useful for the extraction of analytes with a permanent negative charge (strong acids) which cannot be neutralized by pH control.

ISOLUTE PSA, (a primary/secondary amine phase) is a weak anion exchanger, with pK_a values of approximately 8 and 10. It is used for the extraction of anions that exhibit a negative charge at pH 8 or lower. The charge on the sorbent is neutralized at pH 12 or higher. See technical note TN104 and TN105 for method development guidelines for ISOLUTE NH₂ and ISOLUTE PSA respectively.

Retention and Elution Characteristics of ISOLUTE® Strong Anion Exchange Sorbents

Retention and elution using ISOLUTE SAX and PE-AX are illustrated on in figure 2.



RETENTION: At pH ≥ 6.5 , the analyte is essentially 100% charged. Retention is due to ionic interactions.

ELUTION: On the addition of a high ionic strength buffer, the analyte is displaced from the sorbent due to competition with other anions. N.B. For weak anions elution can also be accomplished by adjustment of the pH to 2 pH units below the pK_a of the analyte.

Figure 2. Retention and elution using ISOLUTE® SAX and PE-AX anion exchange sorbents.

In method development using ISOLUTE® polar sorbents, the following points are important:

Sample Pre-treatment

Ionic Strength Control

Ionic strength of the sample should be reduced to <0.05 M by dilution with deionized water or low ionic strength buffer in order to facilitate maximum retention of the analytes. The capacity of an ISOLUTE SAX or PE-AX column is approximately 0.6 milli-equivalents/g of sorbent. The analyte must compete with other anions in the sample for ion exchange sites, and so retention of the analyte is reduced when the ionic strength of the sample is high. Dilution may also reduce sample viscosity, which ensures a free-flowing sample. Analyte retention is facilitated by using buffers that contain anions of lower selectivity than the analyte. The selectivity of some common anions is as follows (ions on the right will displace those on the left):

OH⁻ < acetate < formate < HCO₃⁻ < Cl⁻ < HSO₃⁻
< CN⁻ < citrate < benzene sulfonate

ISOLUTE SAX has a chloride counter ion, whereas PE-AX is pre-equilibrated with an acetate counter ion, and therefore may be a better choice for certain acidic analytes.

pH Control

To ensure that total ionization of the analyte has occurred, the pH of the sample should be adjusted to two pH units above the pK_a of the analyte [see the two (2) pH unit rule in the appendix]. Buffering for pH control should be performed with the lowest strength buffer that will maintain the pH, usually 10–20 mM.

Column Solvation and Equilibration

ISOLUTE SAX and PE-AX columns should be solvated with methanol, acetonitrile or THF.

For an aqueous matrix, both the pH and the ionic strength of the equilibration solvent must be optimized to ensure ionization of the analyte. Ionic strength should be the same as or very similar to that of the sample, ideally not higher than 0.05 M.

Counter Ion Exchange for SAX Columns Only

PLEASE NOTE THAT THIS STEP HAS ALREADY BEEN PERFORMED DURING THE MANUFACTURE OF PE-AX, WHICH IS PRE-EQUILIBRATED WITH ACETATE COUNTER IONS

In order to improve retention for some analytes, it may be necessary to exchange the standard SAX chloride counter ion with one having lower selectivity. The standard protocol for this procedure is as follows.

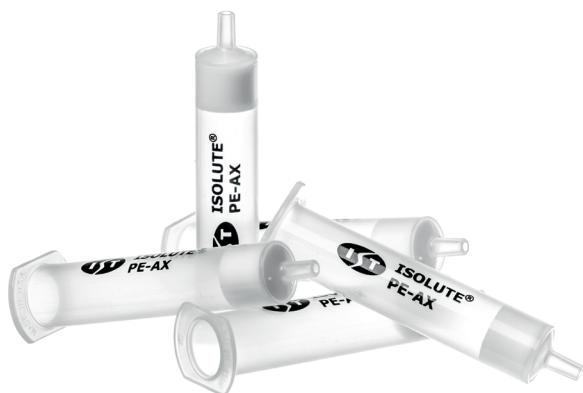
- » Rinse the column with deionized water.
- » Apply an appropriate buffer. The buffer should contain phosphate, acetate, propanoate, carbonate or formate counter ions. For a 0.1 M solution of counter ions, 10–12 bed volumes should be applied (note, a 100 mg sorbent bed mass has a bed volume of 125 μ L). For a 0.3 M solution, 6–8 bed volumes are required.
- » Equilibrate with a 10–20 mM solution of the same buffer.

Sample Loading

For ISOLUTE® SAX and PE-AX columns, typical flow rates are 1 mL/min for 1 mL columns, 3 mL/min for 3 mL columns and 7 mL/min for 6 mL columns. The ion exchange process will not occur efficiently if the flow rate is too high.

Interference Elution

For ISOLUTE SAX and PE-AX columns, ionic strength and pH control should be maintained to prevent analyte loss. The same buffer as the equilibration buffer is often suitable. Methanol or acetonitrile (10–30%) may be added to the buffer for removing lipophilic interferences. Test this rinse step for the presence of the analyte to ensure that there are no losses!



Analyte Elution

Displacement of the Analyte by Mass Action

High ionic strength (>0.1 M) buffers can be used for elution. For analytes with two negative charges, buffers of >0.2 M should be used. Buffers containing ions with a higher affinity for the sorbent than the analyte can be used, but are not required if the ionic strength is sufficiently high. The high concentration of the anions in the buffer will compete with the analyte for the sites on the sorbent causing elution of the analyte. Since ISOLUTE SAX and PE-AX exert very weak secondary (non-polar) interactions, the presence of an organic component may not be necessary for elution.

Neutralization of the Charge on the Analyte (Weak Acids Only)

Weak acids can be eluted using a buffer or solvent adjusted to two (2) pH units below the pK_a of the analyte.)

Non-Aqueous Elution Solvents

If a non-aqueous elution solvent is required, (for example if the eluent is to be injected directly into a GC), evaporated to give a higher concentration of analyte, or derivatized prior to analysis, then organic solvents modified with an acid such formic or acetic acid (2–5%) are suitable.



Appendix

The Two (2) pH Unit Rule

The pK_a of a molecular functional group is defined as the pH at which 50% of this group in solution are charged, and 50% are uncharged. Each pH unit change affects the percentage of charged or uncharged groups by a factor of 10, so it is sensible to perform extractions at a pH at least 2 pH units from the pK_a value, to ensure that 99.5% of the functional groups are in the desired state of ionization.

Table 1. Effect of pH on the dissociation of a weak acid with a pK_a value of 4.0.

Analyte	% free acid (uncharged)	% dissociated (charged)
4.0	50	50
5.0	5.0	95
6.0	0.5	99.5

Table 2. Effect of pH on the dissociation of the conjugate acid of a weak base with a pK_a value of 9.0.

pH	% free base (uncharged)	% dissociated (charged)
9.0	50	50
8.0	5.0	95
7.0	0.5	99.5

EUROPE

Main Office: +46 18 565900
 Toll Free: +800 18 565710
 Fax: +46 18 591922
 Order Tel: +46 18 565710
 Order Fax: +46 18 565705
 order@biotage.com
 Support Tel: +46 18 56 59 11
 Support Fax: + 46 18 56 57 11
 eu-1-pointsupport@biotage.com

NORTH & LATIN AMERICA

Main Office: +1 704 654 4900
 Toll Free: +1 800 446 4752
 Fax: +1 704 654 4917
 Order Tel: +1 704 654 4900
 Order Fax: +1 434 296 8217
 ordermailbox@biotage.com
 Support Tel: +1 800 446 4752
 Outside US: +1 704 654 4900
 us-1-pointsupport@biotage.com

JAPAN

Tel: +81 3 5627 3123
 Fax: +81 3 5627 3121
 jp_order@biotage.com
 jp-1-pointsupport@biotage.com

CHINA

Tel: +86 21 2898 6655
 Fax: +86 21 2898 6153
 cn_order@biotage.com
 cn-1-pointsupport@biotage.com

KOREA

Tel: + 82 31 706 8500
 Fax: + 82 31 706 8510
 korea_info@biotage.com
 kr-1-pointsupport@biotage.com

Distributors in other regions are listed on www.biotage.com

Part Number: TN103.V.1

© 2017 Biotage. All rights reserved. No material may be reproduced or published without the written permission of Biotage. Information in this document is subject to change without notice and does not represent any commitment from Biotage. E&OE. A list of all trademarks owned by Biotage AB is available at www.biotage.com/legal. Other product and company names mentioned herein may be trademarks or registered trademarks and/or service marks of their respective owners, and are used only for explanation and to the owners' benefit, without intent to infringe.