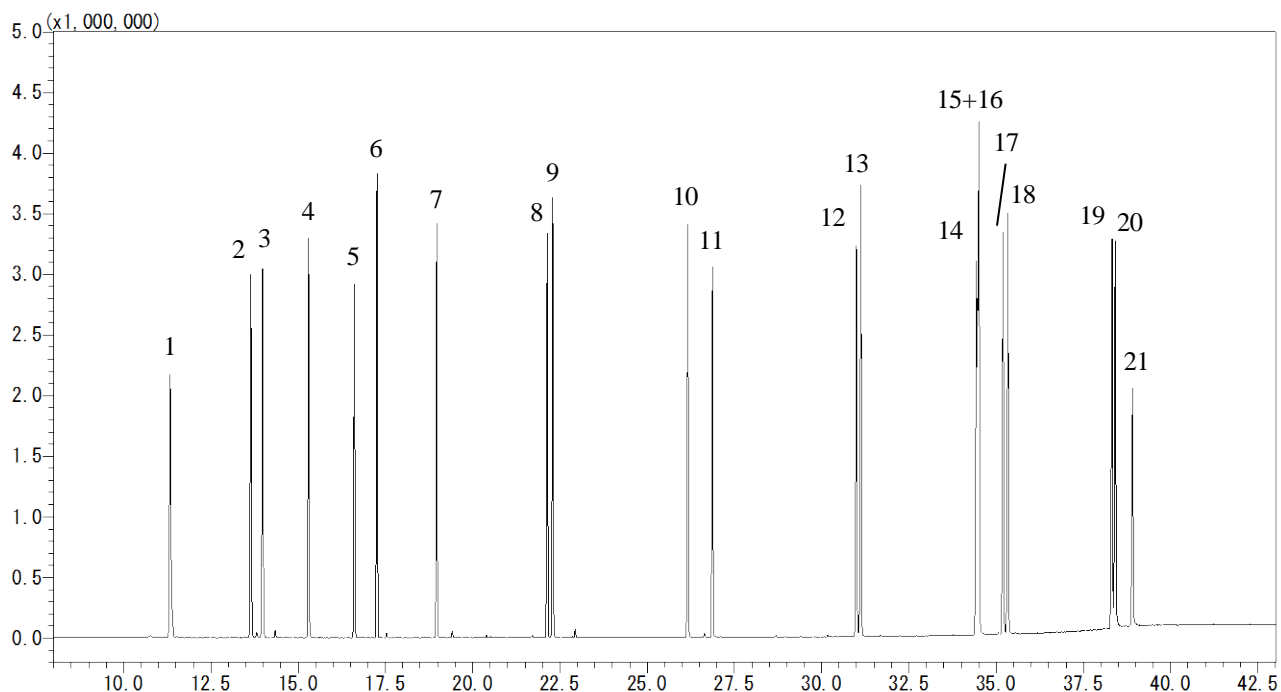


# InertSearch™ for GC

InertCap® Applications

## Polycyclic aromatic hydrocarbons

Data No. GA 187-0644



### Conditions

**System** : GC/MS  
**Column** : InertCap 5MS/NP  
0.25 mm I.D. x 30 m df = 0.25 µm  
**Col. Cat. No.** : 1010-18642  
**Col. Temp.** : 60 °C(3 min hold) - 7 °C/min - 310 °C  
**Carrier Gas** : He 41.6 cm/sec  
**Injection** : Splitless 1min  
250 °C  
**Detection** : MS Scan (35 – 500 m/z)  
Interface Temp. 300 °C  
**Sample Size** : 10 µg/mL in Dichloromethane  
1 µL

### Analyte :

1. Naphthalene
2. 2-Methylnaphthalene
3. 1-Methylnaphthalene
4. Biphenyl
5. Acenaphthylene
6. Acenaphthene
7. Fluorene
8. Phenanthrene
9. Anthracene
10. Fluoranthene
11. Pyrene
12. Benzo[*a*]anthracene
13. Chrysene
14. Benzo[*b*]fluoranthene
15. Benzo[*j*]fluoranthene
16. Benzo[*k*]fluoranthene
17. Benzo[*e*]pyrene
18. Benzo[*a*]pyrene
19. Indeno[1,2,3-*cd*]pyrene
20. Dibenzo[*a,h*]anthracene
21. Benzo[*g,h,i*]perylene