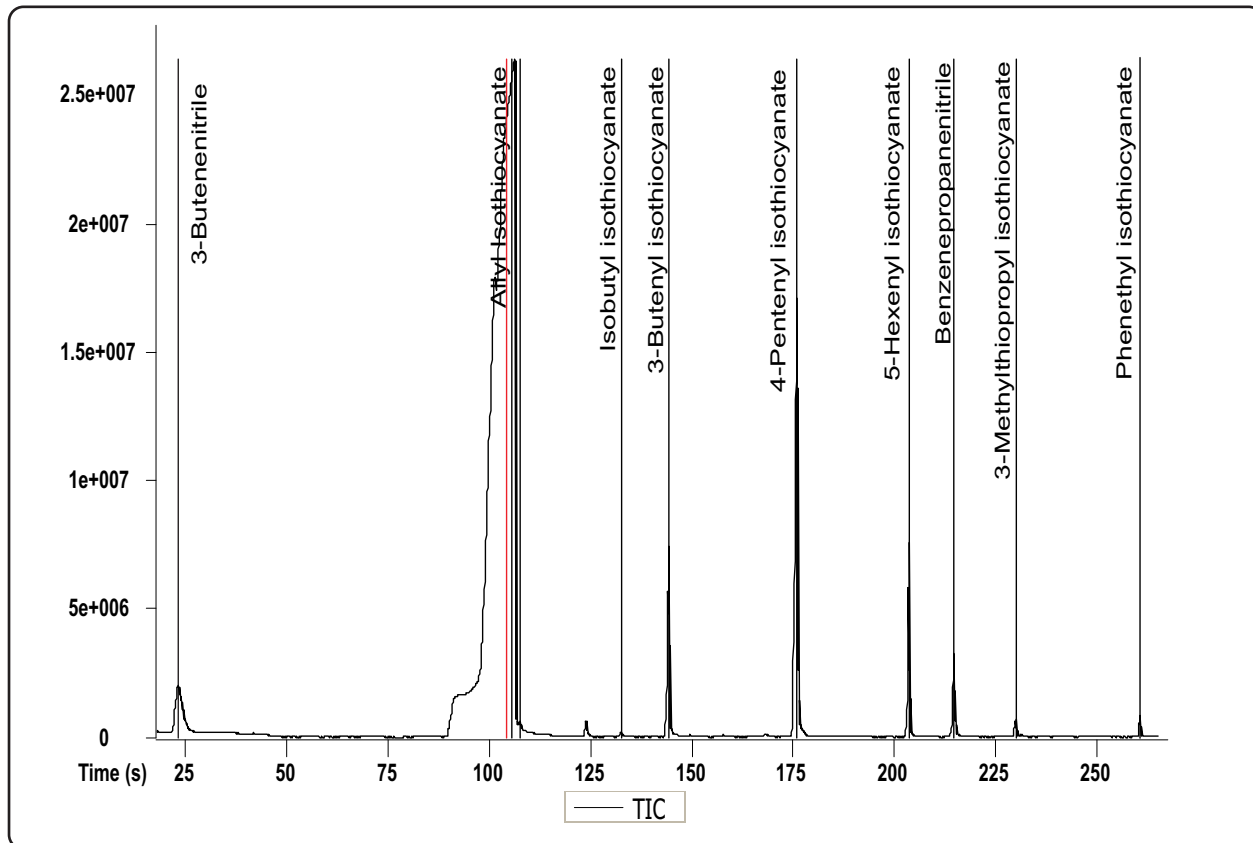


Analysis of Japanese Wasabi Paste by HS-SPME-GC-TOFMS

Life Science and Chemical Analysis Centre
LECO Corporation, Saint Joseph, Michigan USA



A sample of Japanese Wasabi paste was analyzed by HS-SPME-GC-TOFMS. The types of isothiocyanates present make it possible to determine whether genuine Wasabi was used or horseradish, a cheaper substitute.

Column:

10 m x 0.18 mm x 0.18 μ m DB-5

TOFMS:

30 to 500 m/z @ 20 spectra/s

For questions on this analysis e-mail us at:
life_science@leco.com

For a complete listing of snapshots and application notes visit us on the web at www.leco.com

