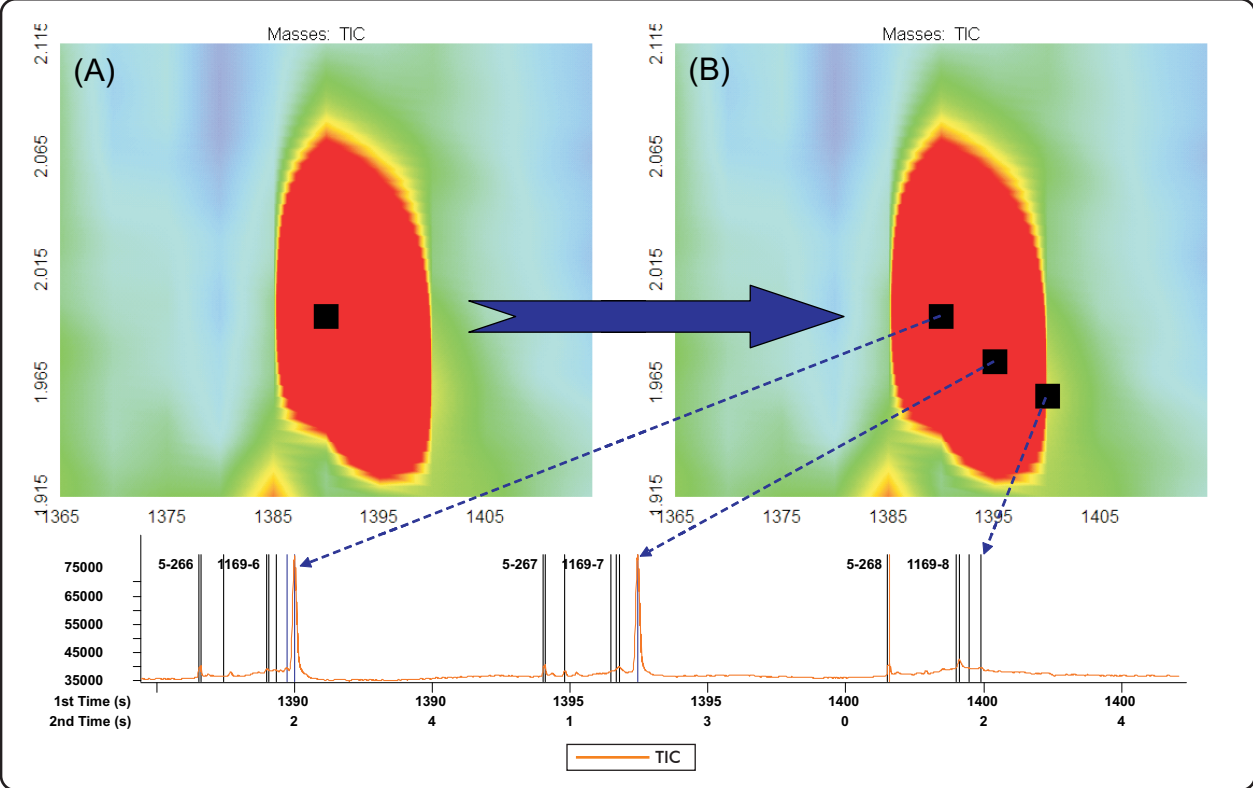


Utilizing the "View Subpeaks" Option in GCxGC

Life Science and Chemical Analysis Centre
LECO Corporation, Saint Joseph, Michigan USA



The ability to quickly see the individual modulations that have been combined to form a GCxGC Peak can be very useful to the analyst. Plot (A) shows a GCxGC peak with a conventional Peak Marker. By selecting "Subpeaks: All" in "Properties", all of the individual modulations that have been combined to form the original peak are assigned their own Peak markers. This is shown in Plot (B) with the peaks corresponding to the Peak Markers being indicated in the lower 1D trace.

For questions on this analysis
e-mail us at: life_science@leco.com

For a complete listing of snapshots
and application notes visit us on the
web at www.leco.com

