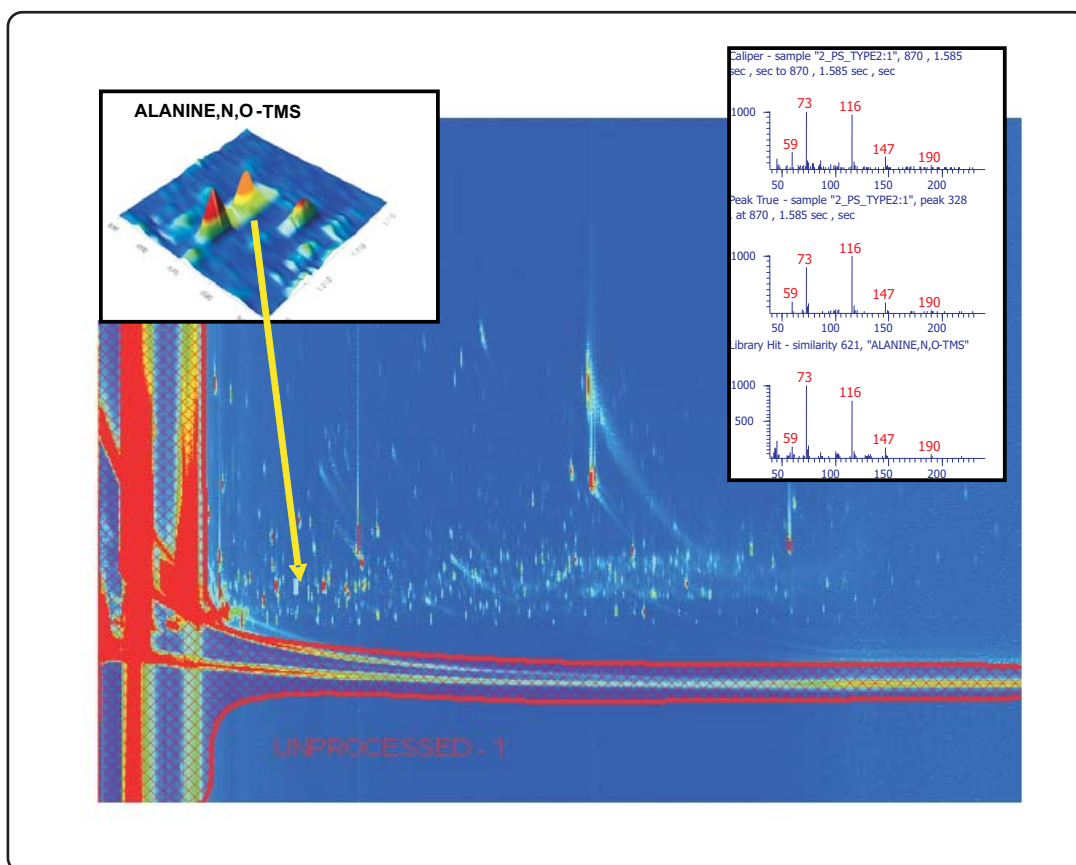


GCxGC-TOFMS Analysis of Type II Diabetic TMS-Derivatized Urine for Metabolite Profile

Life Science and Chemical Analysis Centre
LECO Corporation, Saint Joseph, Michigan USA



GCxGC-TOFMS analysis of a TMS derivatized type II diabetic urine sample showing identification of TMS - Alanine and the Caliper, Peak True, and Library Mass Spectral match. 1710 peaks were found in this sample with a s/n ratio of 100 or greater.

Columns:

30 m x 0.25 mm x 0.25 μ m Rtx-5ms
1.5 m x 0.18 mm x 0.2 μ m Rtx-200

TOFMS:

45 to 800 m/z @ 200 spectra/s

For questions on this analysis
e-mail us at: life_science@leco.com

For a complete listing of snapshots
and application notes visit us on the
web at www.leco.com

