

Practical Determination and Validation of Instrument Detection Limit of Thermo Scientific™ ISQ™ LT Single Quadrupole GC-MS

Richard Law, Senior Application Scientist, Thermo Fisher Scientific, Runcorn UK
 Tommaso Albertini, Marketing Manager, Thermo Fisher Scientific, Rodano Italy

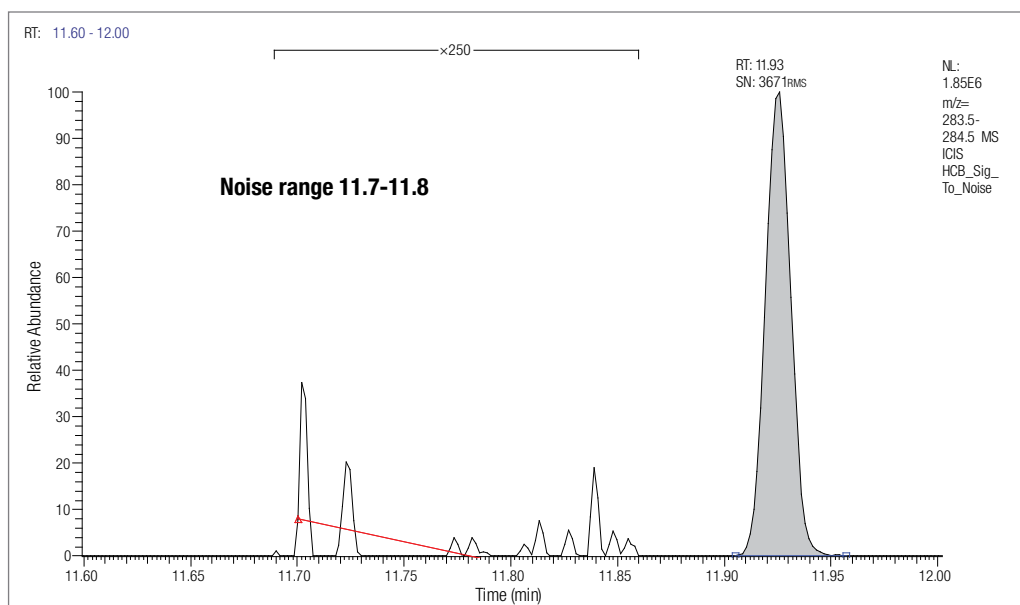


Figure 1.

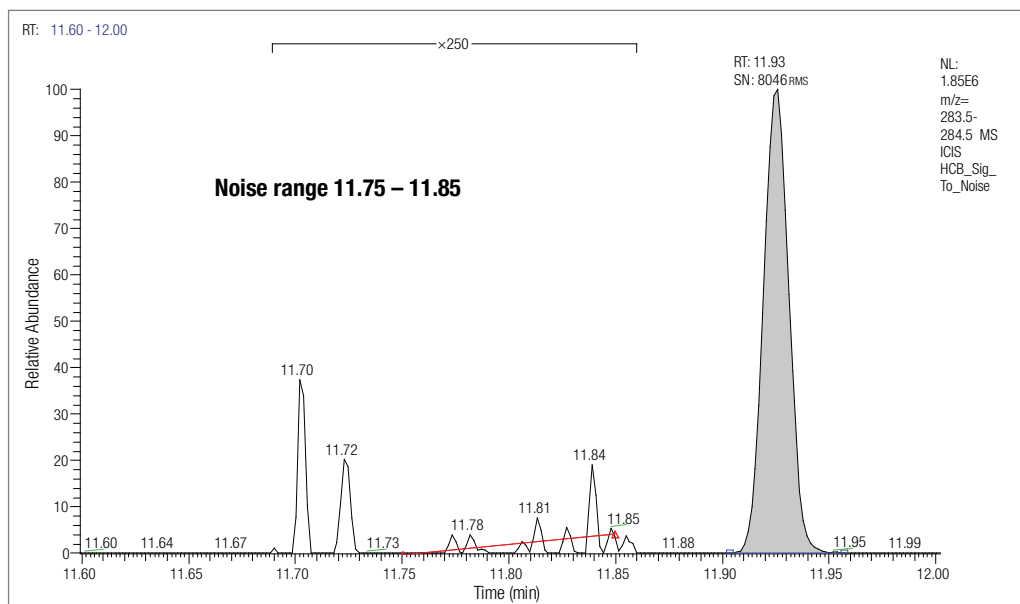


Figure 2.

Chromatograms show the effect of noise range selection on S/N value calculated.

Introduction

Signal to Noise (S/N) has been used for decades to convey the detection limit of an instrument. Technological innovation has driven instruments to exhibit lower noise and greater sensitivity; whilst advancements in gas separation technology mean lower bleed columns and sharper peaks, again, leading to significant improvements in S/N values obtained. Moreover, S/N calculations are also typically performed on a single injection, not demonstrating the repeatability of the instrument in question. S/N measurements usually always rely on some form of operator involvement, such as selecting the start and end of the peak being measured and more importantly choosing the noise range. Figures 1 and 2 show the differences in S/N value for the m/z 284 fragment ion of hexachlorobenzene when the selected noise range differs by only 0.05 minutes. On many GC triple quadrupole instruments the added selectivity leads to much lower baseline noise, rendering the use of S/N as an accurate measure of instrument detection limit inadequate. Therefore, a more accurate or statistically significant method of calculating the detection limit of an instrument is required.

Instrument Detection Limit (IDL)

One way of determining the instrumental Limit of Detection (LOD) is by using the standard deviation of the response of an analyte of choice at a concentration close to the estimated detection limit. This approach gives much more reliable LOD values as it takes into account not only the signal intensity, but also the consistency of the response. Method Detection Limits (MDL) are firmly established with many regulatory bodies and can be defined in many ways. According to the most recent U.S. Code of Federal Regulations¹, MDL is defined as: “the minimum concentration of a substance that can be measured and reported with 99% confidence that the analyte concentration is greater than zero and is determined from analysis of a sample in a given matrix containing the analyte.” This methodology can be seamlessly transferred when calculating Instrument Detection Limits (IDL).

Unlike MDL, the IDL uses solvent based standards containing the test chemical at concentrations that give a consistent response over several repeat injection (ex: %RSD <5). Therefore, the IDL is a statistically rigorous method that uses the precision of a measurement at low analyte levels and accurately reflects the true detection limit of an instrument, ultimately defining how sensitive an analytical system is. Simply, the IDL can be determined by using the following equation²:

$$IDL = t * Amount * \%RSD$$

Where,

t = student t -value for **one-tailed** distribution:
for $n = 8$ injections; $t = 2.998$

Amount = amount of analyte (on-column)

%RSD = relative standard deviation of the response

During this study, the consistency in IDL for octafluoronaphthalene (OFN), a commonly used reference compound in GC-MS, was determined on three separate Thermo Scientific ISQ LT Single Quadrupole GC-MS systems using the method described above.

Experimental

Thermo Scientific ISQ LT Single Quadrupole GC-MS systems were used in all of the experiments, with AS 1310 Liquid Autosampler (two experiments) and a TriPlus RSH™ Autosampler (one experiment). Choosing different robotic arms on ISQs used for this test adds to the rigorosity of the experimental setup and the reduction of any potential autosampler bias. See Table 1 for detailed conditions. All experiments were performed using a 1 μ L injection solution containing 10 fg/ μ L octafluoronaphthalene (OFN) in iso-octane. The IDL was calculated from $n=8$ sequential replicate injections.

Table 1.

GC Conditions	
Instrument	Thermo Scientific™ TRACE™ 1310 ISQ™ LT Single Quadrupole GC-MS
Column	Thermo Scientific™ TraceGOLD™ SQC GC Column (p/n: 26070-1300)
Column dimensions	15 m × 0.25 mm × 0.25 μ m
Injection volume	1 μ L
Inlet temperature	220 °C
Injection Liner	Thermo Scientific™ LinerGOLD™ Splitless Liner single taper with wool, 4 mm ID, 78.5 mm length (p/n: 453A0924)
Injection mode	Splitless
Split flow rate/Splitless time	50 mL/min at 0.8 minutes
Septum purge flow	5 mL/min (constant)
Carrier mode	Constant flow
Carrier gas	Helium
Carrier flow	1.2 mL/min
Temp. gradient	40 °C (hold for 1.0 min); ramp 30 °C/min to 150 °C; ramp 100 °C/min to 250 °C; (hold for 5 min)
Total run time	10.67 min
MS Conditions	
Ionization mode	EI, 70eV
Emission Current	50 μ A
MS transfer line temperature	250 °C
Ion source temperature	200 °C
Acquisition mode	Selective Ion Monitoring (SIM) m/z 272
Software (CDS)	Dionex™ Chromeleon™ 7.2 Chromatography Data System

Results and Discussion

Three different ISQ LT Single Quadrupole GC-MS systems were evaluated using eight sequential replicate injections of a 10 fg/ μ L octafluoronaphthalene standard in iso-octane. The results from each instrument, along with calculated relative standard deviations from which the IDL is derived, are summarized in Table 2.

The instruments used in the experiment are based in three different laboratories around the world and have been deployed in environments running routine applications, in instrument engineering settings, and as training instruments for a number of years (Figure 3). Three separate operators were responsible for setting up the

systems, using three different standard preparations and utilizing two different autosampler types. Even with these variations, all three instruments demonstrated peak area repeatability with %RSD < 4% and displayed outstandingly consistent IDL values, regardless of their age and typical usage. The combination of the ISQs off-axis ion source and unique s-shaped ion-guide creates a curved path allowing chemical and neutral noise to be kept to a minimum, enabling lower detection limits, whilst the Thermo Scientific DynaMax XR detection system provides the sensitivity to detect and amplify the low number of transmitted ions needed at this challenging analyte concentration.

Table 2.

Injection	Peak area (counts per second)		
	Instrument 1 Singapore AI/AS 1310 ISQ LT	Instrument 2 Italy AI/AS 1310 ISQ LT	Instrument 3 UK TriPlus RSH ISQ LT
1	415.02	315.48	249.12
2	417.78	326.94	244.68
3	402.36	304.92	245.52
4	393.48	289.20	266.34
5	412.26	301.92	253.32
6	403.26	308.22	260.88
7	372.12	307.98	266.16
8	388.68	319.80	257.28
Average	400.62	309.31	255.41
SD	15.37	11.59	8.66
%RSD	3.8%	3.7%	3.4%
IDL (fg)	1.2	1.1	1.0

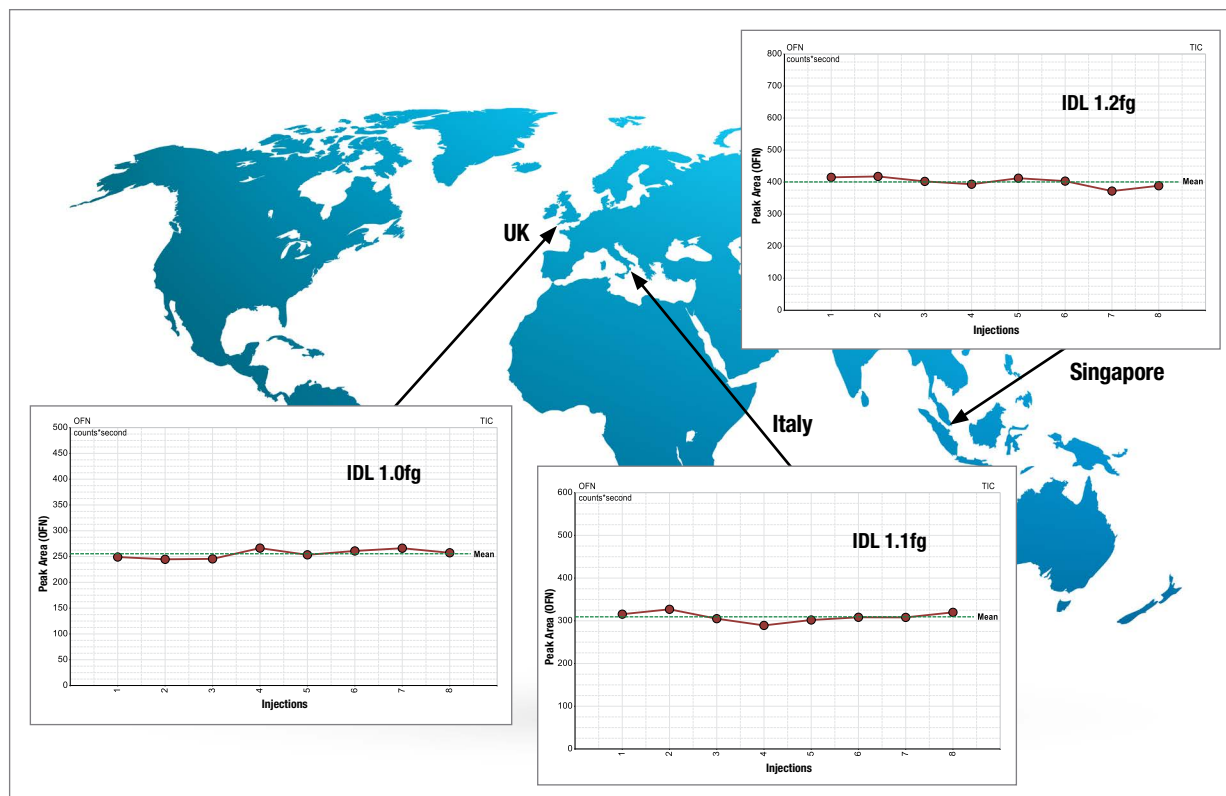


Figure 3.

Conclusion

The Thermo Scientific ISQ LT Single Quadrupole GC-MS system exhibits outstandingly low instrument detection limits ensuring confidence in your analysis.

The use of a statistical method to determine the IDL demonstrates the consistent and sensitive detection that can be achieved at this challenging analyte concentration.

The instrument-to-instrument detection limits using a 10 fg on-column amount have been shown to be highly reproducible and consistent in a variety of settings, regardless of age and use.

The exceptionally sensitive Thermo Scientific DynaMax XR detection system, complemented by the innovative S-Shaped Ion Guide, effectively reduces noise whilst maintaining maximum sensitivity leading to IDLs significantly below 1.5 fg on column.

References

1. *U.S. Code of Federal Regulations*, 49 FR 43430, (Oct. 26, 1984); 50 FR 694, 696 (Jan. 4, 1985), *as amended at* 51 FR 23703 (June 30, 1986), http://www.ecfr.gov/cgi-bin/text-idx?SID=efe93db42854f88dffcf66ba8de737e6&mc=true&node=ap40.23.136_17.b&rgn=div9
2. International Union of Pure and Applied Chemists (IUPAC), http://www.iupac.org/publications/analytical_compendium/Cha18sec437.pdf

www.thermofisher.com/chromatography

©2016 Thermo Fisher Scientific Inc. All rights reserved. All trademarks are the property of Thermo Fisher Scientific and its subsidiaries. This information is presented as an example of the capabilities of Thermo Fisher Scientific products. It is not intended to encourage use of these products in any manners that might infringe the intellectual property rights of others. Specifications, terms and pricing are subject to change. Not all products are available in all countries. Please consult your local sales representative for details.

Africa +43 1 333 50 34 0	Denmark +45 70 23 62 60	Japan +81 6 6885 1213	Russia/CIS +43 1 333 50 34 0
Australia +61 3 9757 4300	Europe-Other +43 1 333 50 34 0	Korea +82 2 3420 8600	Singapore +65 6289 1190
Austria +43 810 282 206	Finland +358 10 3292 200	Latin America +1 561 688 8700	Sweden +46 8 556 468 00
Belgium +32 53 73 42 41	France +33 1 60 92 48 00	Middle East +43 1 333 50 34 0	Switzerland +41 61 716 77 00
Brazil +55 11 2730 3006	Germany +49 6103 408 1014	Netherlands +31 76 579 55 55	Taiwan +886 2 8751 6655
Canada +1 800 530 8447	India +91 22 6742 9494	New Zealand +64 9 980 6700	UK/Ireland +44 1442 233555
China 800 810 5118 (free call domestic) 400 650 5118	Italy +39 02 950 591	Norway +46 8 556 468 00	USA +1 800 532 4752

Thermo
SCIENTIFIC

A Thermo Fisher Scientific Brand