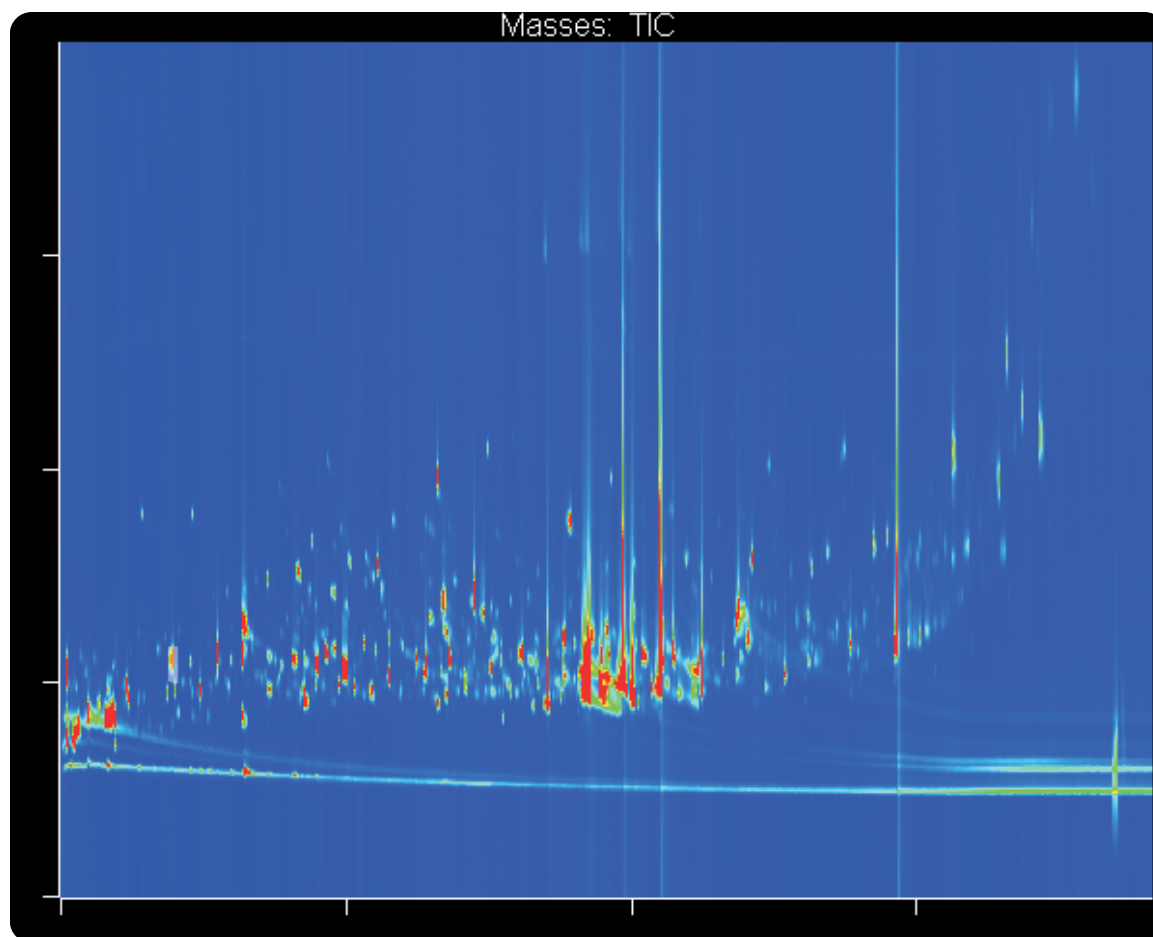


GCxGC-TOFMS Analysis of TMS-Derivatized Lettuce Extracted Samples

Life Science and Chemical Analysis Centre
LECO Corporation, Saint Joseph, Michigan USA



GCxGC-TOFMS analysis of TMS-derivatives in lettuce with approximately 1540 identified peaks.

Columns:

30 m x 0.25 mm x 0.25 μ m Rtx-5ms
1.4 m x 0.10 mm x 0.10 μ m Rtx-5ms

TOFMS:

45 to 650 m/z @ 200 spectra/s

For questions on this analysis
e-mail us at: life_science@leco.com

For a complete listing of snapshots
and application notes visit us on the
web at www.leco.com



Application Snapshot

