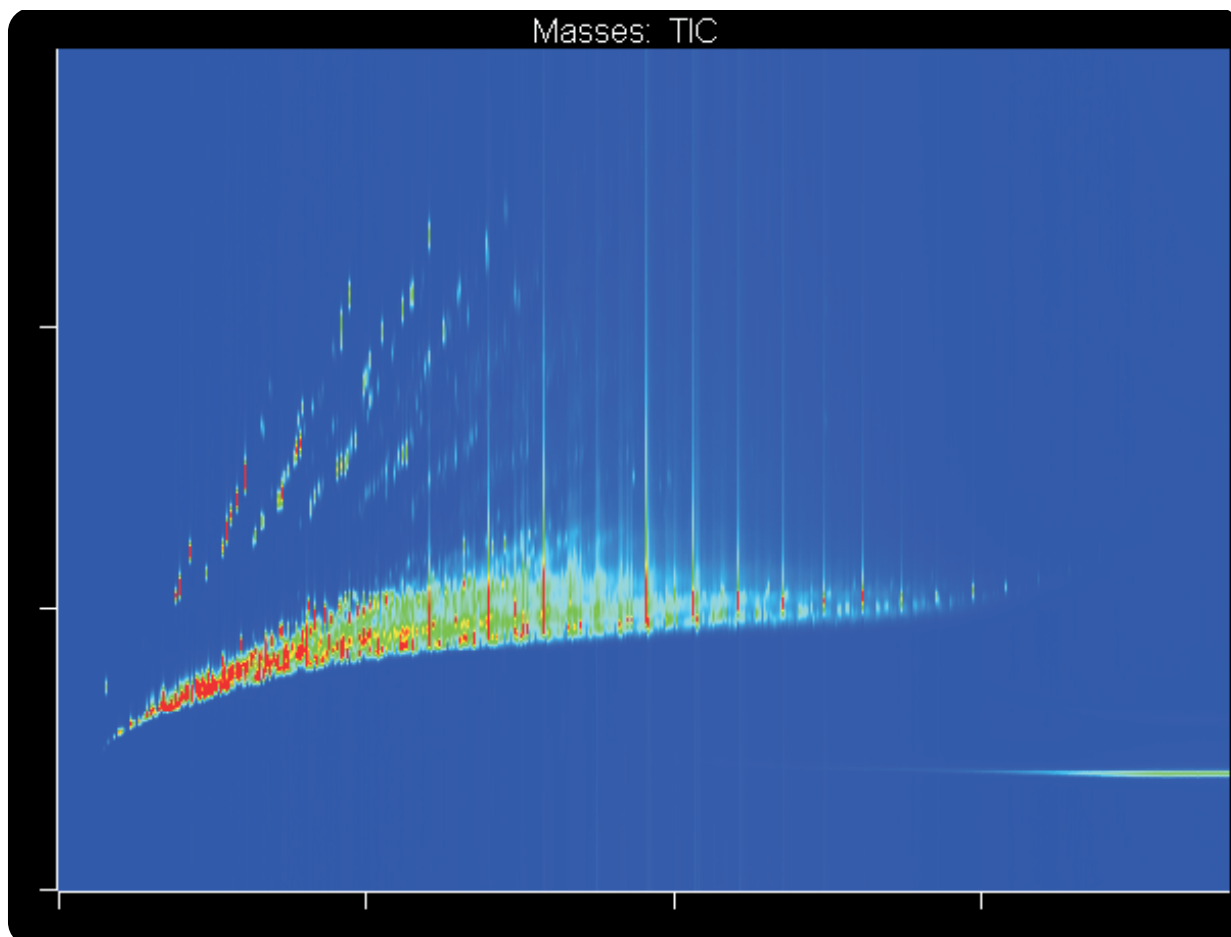


# GCxGC-TOFMS Analysis of Raw Diesel

Life Science and Chemical Analysis Centre  
LECO Corporation, Saint Joseph, Michigan USA



**GCxGC-TOFMS analysis of Raw Diesel showing two dimensional separation of functional classes.**

#### Columns:

50 m x 0.20 mm x 0.50  $\mu$ m DB-PONA  
1.7 m x 0.10 mm x 0.10  $\mu$ m DB-WAX

#### TOFMS:

35 to 450 m/z @ 142 spectra/s

For questions on this analysis  
e-mail us at: [life\\_science@leco.com](mailto:life_science@leco.com)

For a complete listing of snapshots  
and application notes visit us on the  
web at [www.leco.com](http://www.leco.com)

