

# GC CAPILLARY COLUMN APPLICATIONS: PETROCHEMICAL

## Reference Naphtha Standard

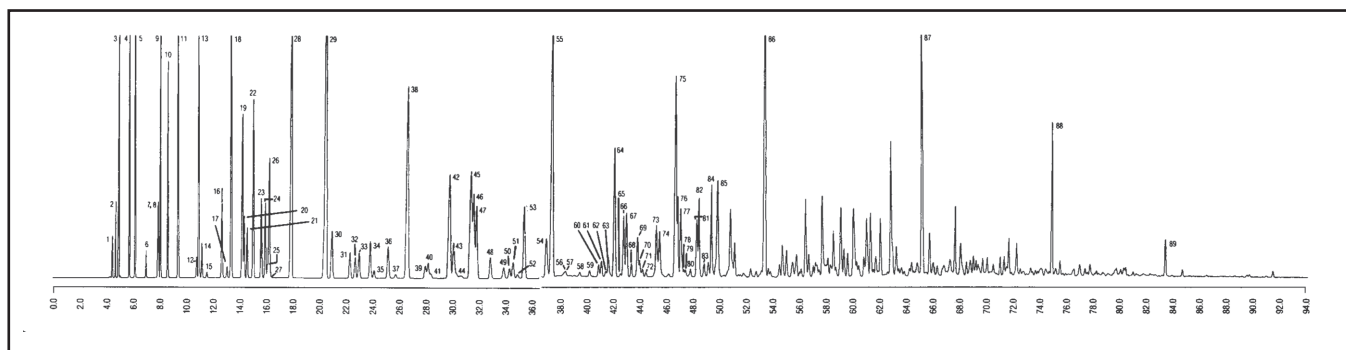
COLUMN: 007-1,  
Dimethylpolysiloxane  
50M. x 0.25mm I.D. x  
0.5µm film  
Cat. No.: 007-1-50-0.5F  
Temperature: 35° (30.0 min. hold)  
(2°/min.) - 200°C hold  
Injector: 200°C  
Detector: 250°C, FID  
Carrier Gas: 19.8 cm/sec., Helium

1. propane  
2. isobutane  
3. n-butane  
4. isopentane  
5. n-pentane  
6. 2,2-dimethylbutane  
7. cyclopentane  
8. 2,3-dimethylbutane  
9. 2-methylpentane  
10. 3-methylpentane  
11. n-hexane  
12. 2,2-dimethylpentane  
13. methylcyclopentane  
14. 2,4-dimethylpentane  
15. 2,2,3-trimethylbutane  
16. benzene  
17. 3,3-dimethylpentane  
18. cyclohexane  
19. 2-methylhexane  
20. 2,3-dimethylpentane  
21. 1,1-dimethylcyclopentane  
22. 3-methylhexane  
23. cis-1,3-dimethylcyclopentane  
24. trans-1,3-dimethylcyclopentane  
25. 3-ethylpentane  
26. trans-1,2-dimethylcyclopentane  
27. 2,2,4-trimethylpentane

28. n-heptane  
29. methylcyclohexane and  
cis-1,2-dimethylcyclopentane  
30. 1,1,3-trimethylcyclopentane  
and 2,2-dimethylhexane  
31. ethylcyclopentane  
32. 2,5-dimethylhexane  
and 2,2,3-trimethylpentane  
33. 2,4-dimethylhexane  
34. 1-trans-2-cis-4-trimethylcyclopentane  
35. 3,3-dimethylhexane  
36. 1-trans-2-cis-3-trimethylcyclopentane  
37. 2,3,4-trimethylpentane  
38. toluene and 2,3,3-trimethylcyclopentane  
39. 1,1,2-trimethylcyclopentane  
40. 2,3-dimethylhexane  
41. 2-methyl-3-ethylpentane  
42. 2-methylheptane  
43. 4-methylheptane and  
3-methyl-3-ethylpentane  
44. 3,4-dimethylhexane  
45. cis-1,3-dimethylcyclohexane  
46. 3-methylheptane and  
1-cis-2-trans-3-trimethylcyclopentane  
47. 3-ethylhexane and  
trans-1,4-dimethylcyclohexane  
48. 1,1-dimethylcyclohexane

49. trans-1,3-ethylmethylcyclopentane and  
2,2,5-trimethylhexane  
50. cis-1,3-ethylmethylcyclopentane  
51. trans-1,2-ethylmethylcyclopentane  
52. 1,1-ethylmethylcyclopentane  
and 2,2,4-trimethylhexane  
53. trans-1,2-dimethylcyclohexane  
54. trans-1,3-dimethylcyclohexane  
and cis-1,4-dimethylcyclohexane  
55. n-octane  
56. isopropylcyclopentane and  
2,4,4-trimethylhexane  
57. unidentified C9 naphthene  
58. unidentified C9 naphthene  
59. cis-1,2-ethylmethylcyclopentane  
and 2,3,5-trimethylhexane  
60. 2,2-dimethylheptane  
61. cis-1,2-dimethylcyclohexane  
62. 2,4-dimethylheptane  
63. 4,4-dimethylheptane  
64. ethylcyclohexane and  
n-propylcyclopentane  
65. 2-methyl-4-ethylhexane  
66. 2,6-dimethylheptane  
67. 1,1,3-trimethylcyclohexane  
68. unidentified C9 naphthene  
69. 2,5-dimethylheptane

70. 3,3-dimethylheptane and  
3,5-dimethylheptane  
71. unidentified C9 naphthene  
72. unidentified C9 naphthene  
73. ethylbenzene  
74. unidentified C9 naphthene  
75. m-xylene  
76. p-xylene  
77. 2,3-dimethylheptane  
78. 3,4-dimethylheptane  
79. 3,4-dimethylheptane  
80. 4-ethylheptane  
85. o-xylene  
86. n-nonane  
87. n-decane  
88. n-undecane  
89. n-dodecane  
stereoisomers



PO Box 3881, Woodbridge, CT 06525 • (203) 393-3112 • FAX (203) 393-0391  
TOLLFREE: 800-275-7033 • E-MAIL: tech@quadrexcorp.com