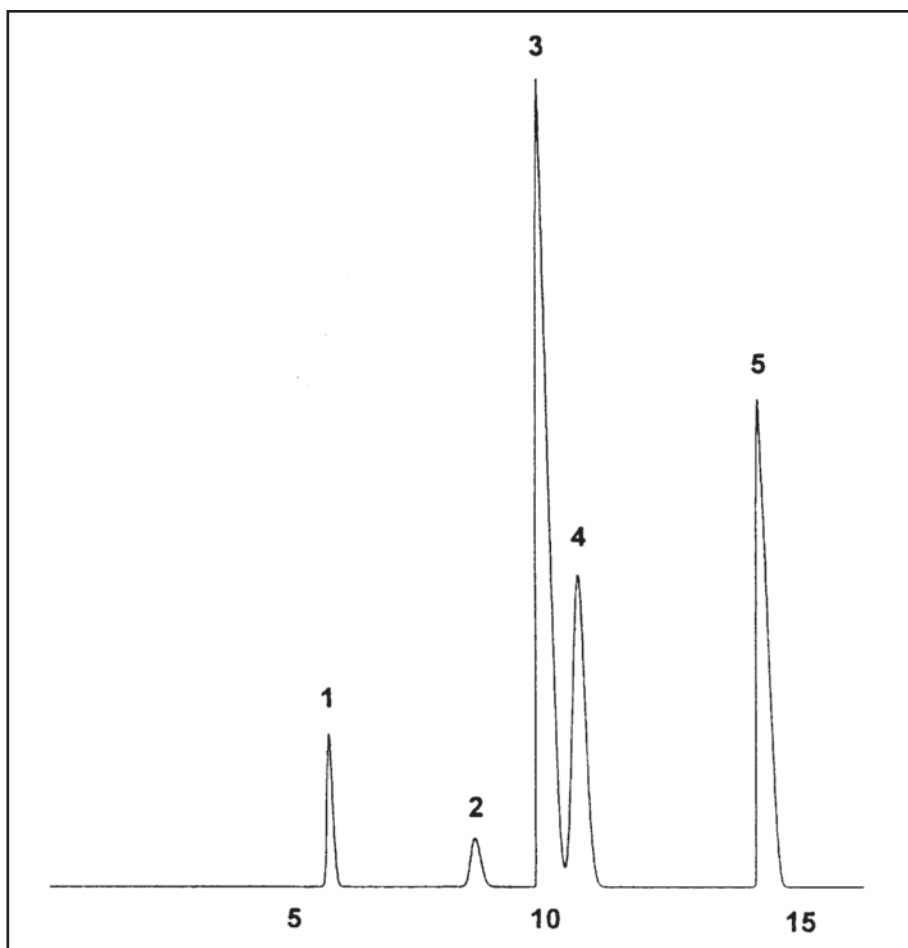


GC CAPILLARY COLUMN APPLICATIONS: INDUSTRIAL SOLVENTS

Ethylene Oxide

COLUMN: 007-1,
Dimethylpolysiloxane
30M. x 0.32mm I.D. x
10.0µm film
Cat. No.: 007-1-30W-10.0F
Temperature: 50° (3 min. hold)
(6°/min.) - 200°C
Injector: 220°C
Detector: 290°C, FID
Carrier Gas: 26 cm/sec., Helium

1. ethylene oxide
2. Freon 11
3. methylene chloride
4. Freon 113
5. chloroform



PO Box 3881, Woodbridge, CT 06525 • (203) 393-3112 • FAX (203) 393-0391
TOLLFREE: 800-275-7033 • E-MAIL: tech@quadrexcorp.com