

# Fast Analysis of the Florida TRPH C8–C40 Standard Using Conventional GC Instrumentation

Anila I. Khan, Thermo Fisher Scientific, Runcorn, UK

## Key Words

Fast GC analysis, Florida TRPH C8–C40 standard, 100% dimethylpolysiloxane, Fast GC column, TraceGOLD TG-1MS

## Abstract

This application note compares the performance of a 0.15 mm internal diameter (i.d.) GC column with that of a 0.25 mm GC column. An increase in speed of analysis for a TRPH (Florida) C8–C40 standard is demonstrated with the 0.15 mm column. No compromise in the separation capability of the method was observed and conversion of the conventional method was easily achieved.

## Introduction

An important consideration in many laboratories is speed and sample throughput. A GC separation on a 30 m column with a 0.25 mm i.d. at 1.0 mL/min flow rate can take 30 minutes or more of analysis time, depending on the mixture of analytes being separated. There are some parameters that can be adjusted in a GC method to reduce run time, including an increase in column temperature, an increase in temperature ramp rate, or a reduction in column length. However, these changes can be detrimental to the resolution of the components.

Shorter columns can be used to reduce analysis time without loss of resolution, as long as the column inner diameter is also reduced so that faster mass transfer and better efficiency can be achieved.

There are some practical considerations when reducing column length and i.d.:

- The ratio of column length to i.d. should remain the same.
- The column stationary phase should remain the same.
- The phase ratio ( $\beta$ ) of the columns should be kept the same where possible.



This application note describes the transfer of a method for the Florida TRPH C8–C40 standard solution from a standard GC column to a Thermo Scientific™ TraceGOLD™ TG-1MS Fast GC column with an equivalent phase.

Consumables		Part Number
Fast GC column:	TraceGOLD TG-1MS, 20 m × 0.15 mm × 0.15 μm	26099-2760
Standard GC column:	Equivalent 100% dimethylpolysiloxane 30 m × 0.25 mm × 0.25 μm	
Injection port septum:	Thermo Scientific 17 mm BTO septum	31303211
Liner:	Thermo Scientific™ Split FocusLiner™ for 50 mm needle, 5 × 8 × 105 mm	453T1905
Column ferrules:	100% graphite ferrules for Thermo Scientific™ TRACE™ injector, 0.1–0.25 mm i.d.	29053488
Injection syringe:	50 mm 25s gauge, 10 μL fixed needle syringe for Thermo Scientific™ TriPlus™ Autosampler	36500525
Vials and closures:	Thermo Scientific 9 mm Wide Opening Screw Thread Vials Convenience Kit, 2 mL Clear glass vial with ID Patch, PTFE/Blue Silicone septum	60180-599

### Separation Preparation

A pre-prepared working standard solution of Florida TRPH C8–C40 with a concentration of 500 μg/mL in hexane was obtained commercially and use without further preparation.

### GC Conditions

Instrumentation:	Thermo Scientific TRACE GC Ultra
Injector type:	Split/Splitless
Injector mode:	Split, constant septum purge
Injector temperature:	250 °C
Detector type:	Flame ionization detector (FID)
Detector temperature:	330 °C
Detector air flow:	350 mL/min
Detector hydrogen flow:	35 mL/min
Detector nitrogen flow:	30 mL/min

Data was acquired and processed using Thermo Scientific™ Xcalibur™ software.

### Method Transfer Equations

The following calculations were used to determine the system parameters required to optimize performance using a TraceGOLD Fast GC column:

$$t_{g2} = t_{g1} \frac{v_2 \beta_2 l_1}{v_1 \beta_1 l_2} \quad T_2 = T_1 \frac{v_1 \beta_1 l_2}{v_2 \beta_2 l_1}$$

Where;

$t_{g1}, t_{g2}$	- temperature gradient for original and new conditions
$v_1, v_2$	- linear velocity of gas for original and new conditions
$T_1, T_2$	- hold time for isothermal part of separation for original and new conditions
$\beta_1, \beta_2$	- phase ratio for original and new conditions
$l_1, l_2$	- length of column for original and new conditions

<b>Standard method (I):</b>	100 % dimethylpolysiloxane-phased GC column, 30 m × 0.25 mm × 0.25 μm, β = 250
Carrier gas:	1.2 mL/min helium flow rate, linear velocity 30 cm/s, constant flow
Split injection:	25:1, 1.0 μL
Oven:	40 °C (2 min), 10 °C/min, 330 °C (10 min), 41 min total run time

<b>Fast method (II):</b>	TG-1MS 20 m × 0.15 mm × 0.15 μm, β = 250
Carrier gas:	0.6 mL/min helium flow rate, linear velocity 30 cm/s, constant flow
Split injection:	50:1, 1.0 μL
Oven:	40 °C (1.3 min), 15 °C/min, 330 °C, 27.63 min total run time
<b>Faster method (III):</b>	TG-1MS 20 m × 0.15 mm × 0.15 μm, β = 250
Carrier gas:	1.0 mL/min helium flow rate, linear velocity 43 cm/s, constant flow
Split injection:	50:1, 1.0 μL
Oven:	40 °C (1 min), 20 °C/min, 330 °C, 21.5 min total run time

## Results

Figure 1 illustrates that the analysis time decreased by 21% on the FAST GC column (II) compared to the standard column (I), with an increase in resolution of approximately 18%. The method (II) was then further modified by increasing the linear velocity by approximately 40–50%. As a result, the speed of separation was further increased as shown in faster method (III). Overall, the analysis time was reduced by approximately 40% compared to the original method (I), with no loss of resolution (Figure 1).

Pressure considerations: The column head pressure on the Fast GC column was 367 kPa (method II) and the standard GC column was 201 kPa (method I) at an oven temperature of 330 °C and linear velocity of 30 cm/s. By increasing the linear velocity to 43 cm/s, the column head pressure increased to 451 kPa for the Fast GC column (method III). The increase in performance is gained with an increase in column head pressure but is still within the operating limits of a conventional GC system with a maximum pressure input of 1000 kPa.

Six replicate injections were carried out on standard and Fast GC columns, the latter at two linear velocities. The data illustrates excellent retention time reproducibility for all Florida TRPH C8–C40 standard solution components (Table 1).

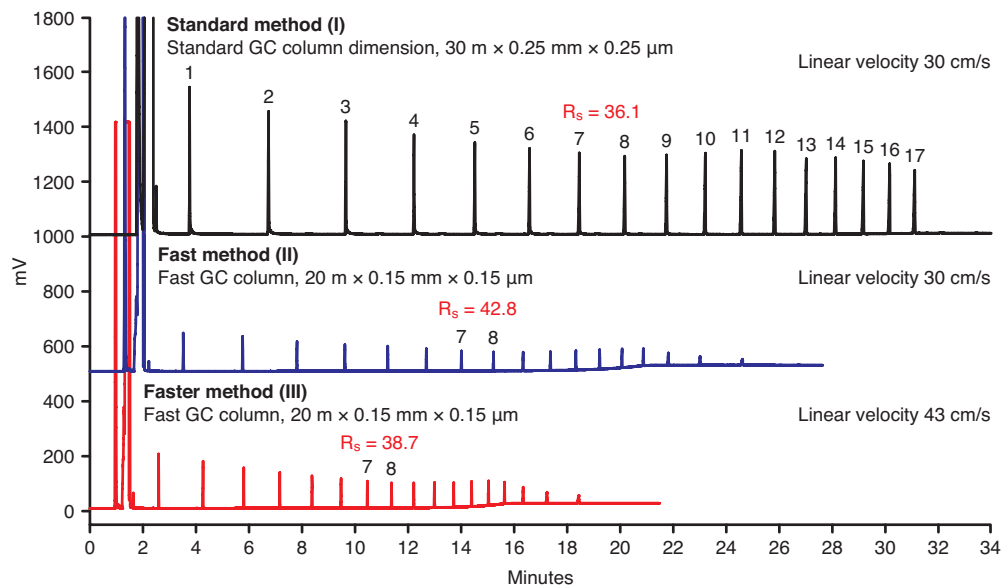


Figure 1: Chromatograms for Florida TRPH C8–C40 standard solution analyzed on a standard GC column and a Fast GC column. Average resolution values of six replicate injections were compared on peaks 7 and 8.

Compound	Linear Velocity 30 cm/s				Linear Velocity 43 cm/s	
	Standard GC Column (I) Mean $t_R$ (min)	%RSD (n=6)	Fast GC Column (II) Mean $t_R$ (min)	%RSD (n=6)	Fast GC Column (III) Mean $t_R$ (min)	%RSD (n=6)
1. n-Octane (C8)	3.77	0.07	3.52	0.13	2.59	0.07
2. n-Decane (C10)	6.75	0.02	5.76	0.11	4.27	0.05
3. n-Dodecane (C12)	9.67	0.01	7.81	0.08	5.81	0.04
4. n-Tetradecane (C14)	12.24	0.01	9.63	0.07	7.17	0.04
5. n-Hexadecane (C16)	14.54	0.01	11.24	0.07	8.38	0.04
6. n-Octadecane (C18)	16.60	0.01	12.70	0.06	9.48	0.02
7. n-Eicosane (C20)	18.48	0.01	14.02	0.05	10.48	0.02
8. n-Docosane (C22)	20.19	0.01	15.23	0.05	11.39	0.02
9. n-Tetracosane (C24)	21.77	0.01	16.35	0.05	12.23	0.02
10. n-Hexacosane (C26)	23.24	0.01	17.38	0.04	13.01	0.02
11. n-Octacosane (C28)	24.60	0.01	18.34	0.04	13.73	0.01
12. n-Triacontane (C30)	25.86	0.02	19.24	0.04	14.41	0.02
13. n-Dotriacontane (C32)	27.04	0.01	20.08	0.04	15.05	0.02
14. n-Tetratriacontane (C34)	28.16	0.01	20.89	0.05	15.65	0.02
15. n-Hexatriacontane (C36)	29.21	0.01	21.83	0.06	16.35	0.02
16. n-Octatriacontane (C38)	30.20	0.01	23.03	0.07	17.25	0.03
17. n-Tetracontane (C40)	31.14	0.02	24.61	0.09	18.44	0.04

Table 1: Retention time and reproducibility data from six replicate injections. Retention time RSDs calculated on 3 decimal places.

## Conclusion

The use of a Fast GC column gave a reduction in run time of 21% over a standard GC column, following a method transfer with no changes in system configuration. Further reduction in run time was observed when linear velocity was increased to 40% without loss of resolution compared to the standard method. Data on the Fast GC column showed excellent retention time reproducibility at 30 and 43 cm/s linear velocity.

GC analysis time can be reduced by transferring a method to a Fast GC column, without compromising performance; however, it is necessary to consider:

- Column length
- Column i.d.
- Column film thickness
- Carrier gas linear velocity
- Temperature ramp rate

This approach has been used to transfer a Florida TRPH C8–C40 solution from a standard 30 m × 0.25 mm × 0.25 μm GC column to a Fast GC column. Up to 40% faster analysis time can be achieved without a compromise in resolution and without changes to the system configuration.

[thermoscientific.com/columnsforgc](http://thermoscientific.com/columnsforgc)

© 2013 Thermo Fisher Scientific Inc. All rights reserved. All trademarks are the property of Thermo Fisher Scientific Inc. and its subsidiaries. This information is presented as an example of the capabilities of Thermo Fisher Scientific Inc. products. It is not intended to encourage use of these products in any manners that might infringe the intellectual property rights of others. Specifications, terms and pricing are subject to change. Not all products are available in all countries. Please consult your local sales representative for details.

**USA and Canada** +1 800 332 3331  
**France** +33 (0)1 60 92 48 34  
**Germany** +49 (0) 2423 9431 20 or 21  
**United Kingdom** +44 (0)1928 534110  
**Japan** +81 3 5826 1615

**China** +86 21 68654588 +86 10 84193588  
+86 20 83145199 800 810 5118  
**India** +91 22 6742 9494 +91 27 1766 2352  
**Australia** 1 300 735 292 (free call domestic)  
**New Zealand** 0800 933 966 (free call domestic)  
**All Other Enquiries** +44 (0) 1928 534 050

**Technical Support**  
**North America** +1 800 332 3331  
**Outside North America** +44 (0) 1928 534 440

**Thermo**  
**SCIENTIFIC**

Part of Thermo Fisher Scientific