

# GC CAPILLARY COLUMN APPLICATIONS: INDUSTRIAL SOLVENTS

## C1 to C10 Ethyl Esters

COLUMN: BTR-CW, Bonded  
Carbowax/BTR -  
Oxygen Resistant  
30M. x 0.25mm I.D. x  
0.25µm film

Cat. No.: BTR-CW-30-0.25F

Temperature: 80° (4 min. hold)  
(8°/min.) - 200°C

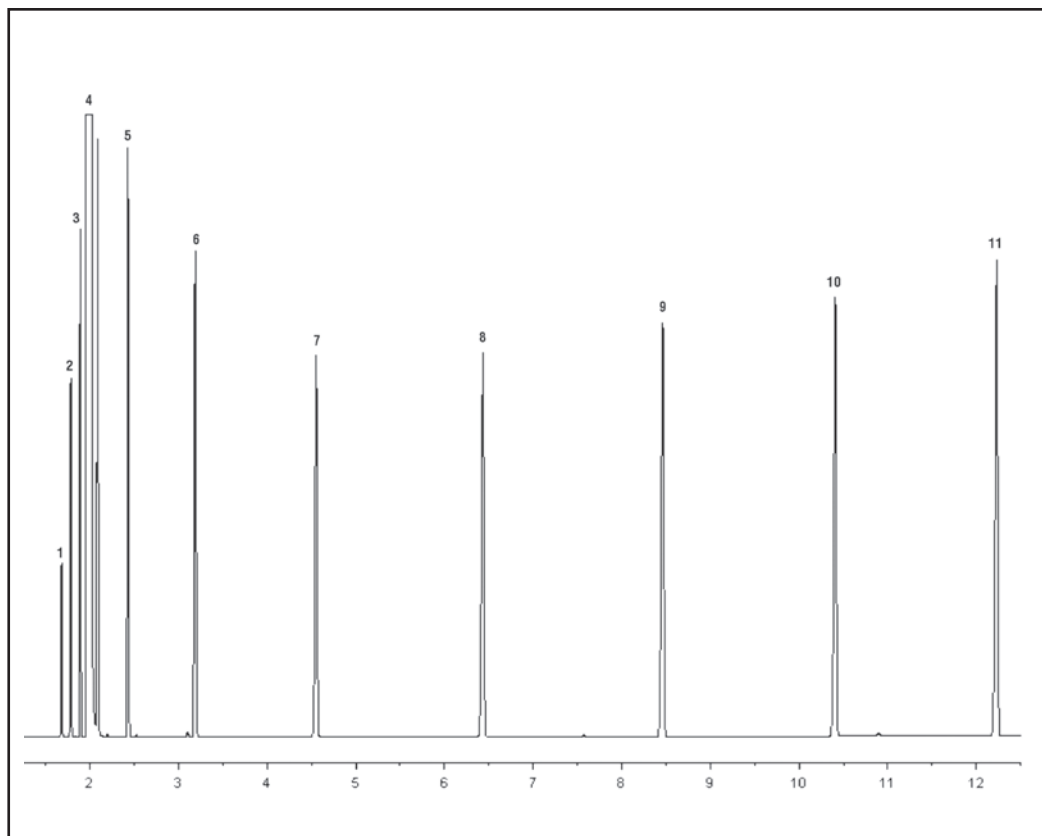
Injector: 250°C

Detector: 250°C

Split Flow: 40cc/min.

Sample: 0.4µl

1. C1 ethyl ester
2. C2 ethyl ester
3. C3 ethyl ester
4. solvent
5. C4 ethyl ester
6. C5 ethyl ester
7. C6 ethyl ester
8. C7 ethyl ester
9. C8 ethyl ester
10. C9 ethyl ester
11. C10 ethyl ester



PO Box 3881, Woodbridge, CT 06525 • (203) 393-3112 • FAX (203) 393-0391  
TOLLFREE: 800-275-7033 • E-MAIL: [tech@quadrexcorp.com](mailto:tech@quadrexcorp.com)