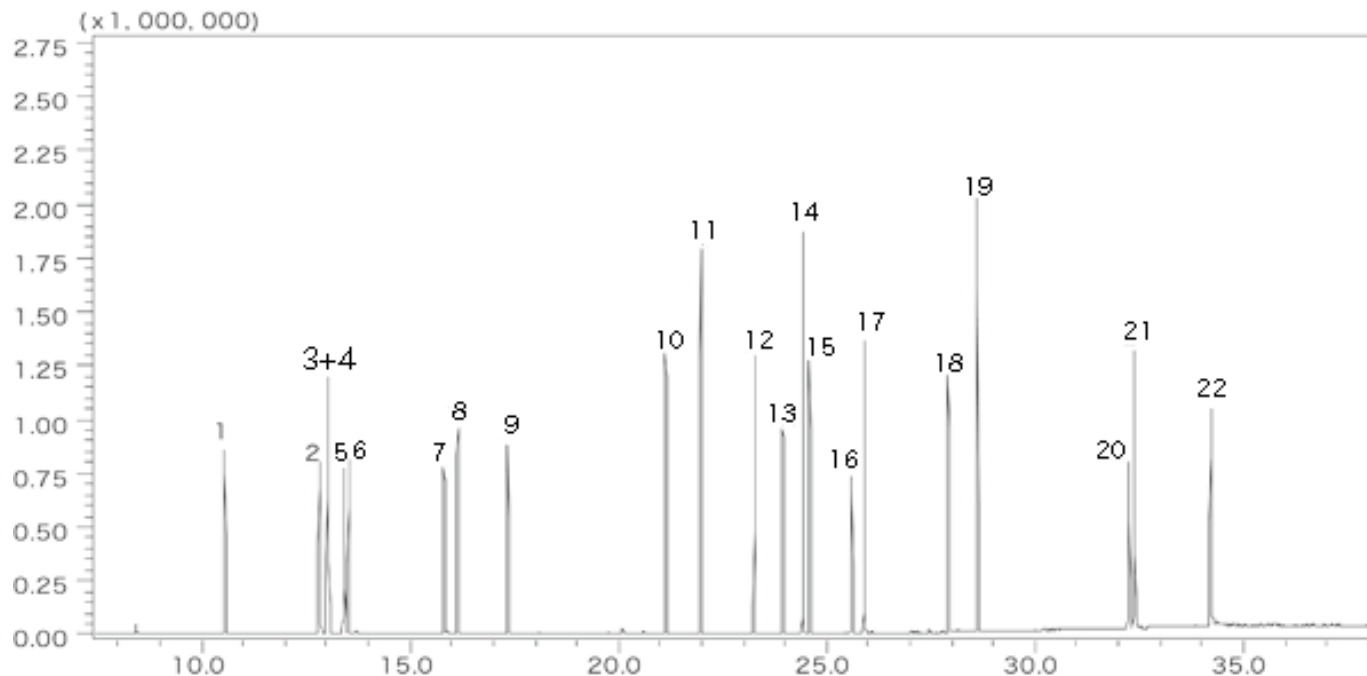


# InertSearch™ for GC

InertCap® Applications

## Automotive interior materials

Data No. GA060-0000



System : GC/FID T-DexII  
Column : InertCap 1MS  
0.25mmI.D.×60m df=0.25µm  
Column Temp. : 40°C (5min)→10°C/min.→280°C (21min)  
Carrier Gas : He 1mL/min (constant flow)  
Injection : TD/Split 1 : 5  
Detection : MS Scan  
Sample : each 100ng Solvent : Ethanol

Solutes : 1. Toluene  
2. Ethylbenzene  
3. m-Xylene  
4. p-Xylene  
5. Styrene  
6. o-Xylene  
7. p-Dichlorobenzene  
8. 2-Ethyl-1-hexanol  
9. Nonanal  
10. D6 (Dodecamethylcyclhexasiloxane)  
11. Tetradecane  
12. BHT : Butylated hydroxytoluene  
13. DEP : Diethyl phthalate  
14. C16 : n-Hexadecane  
15. TBP : Tributyl phosphate  
16. TCEP : Tris (2-chloroethyl) phosphate  
17. DBA : Di-n-butyl adipate  
18. DBP : Di-n-butyl phthalate  
19. C20 : n-Eicosane  
20. TPP : Triphenyl phosphate  
21. DOA : Di (2-ethylhexyl) adipate  
22. DOP : Di (2-ethylhexyl) phthalate