

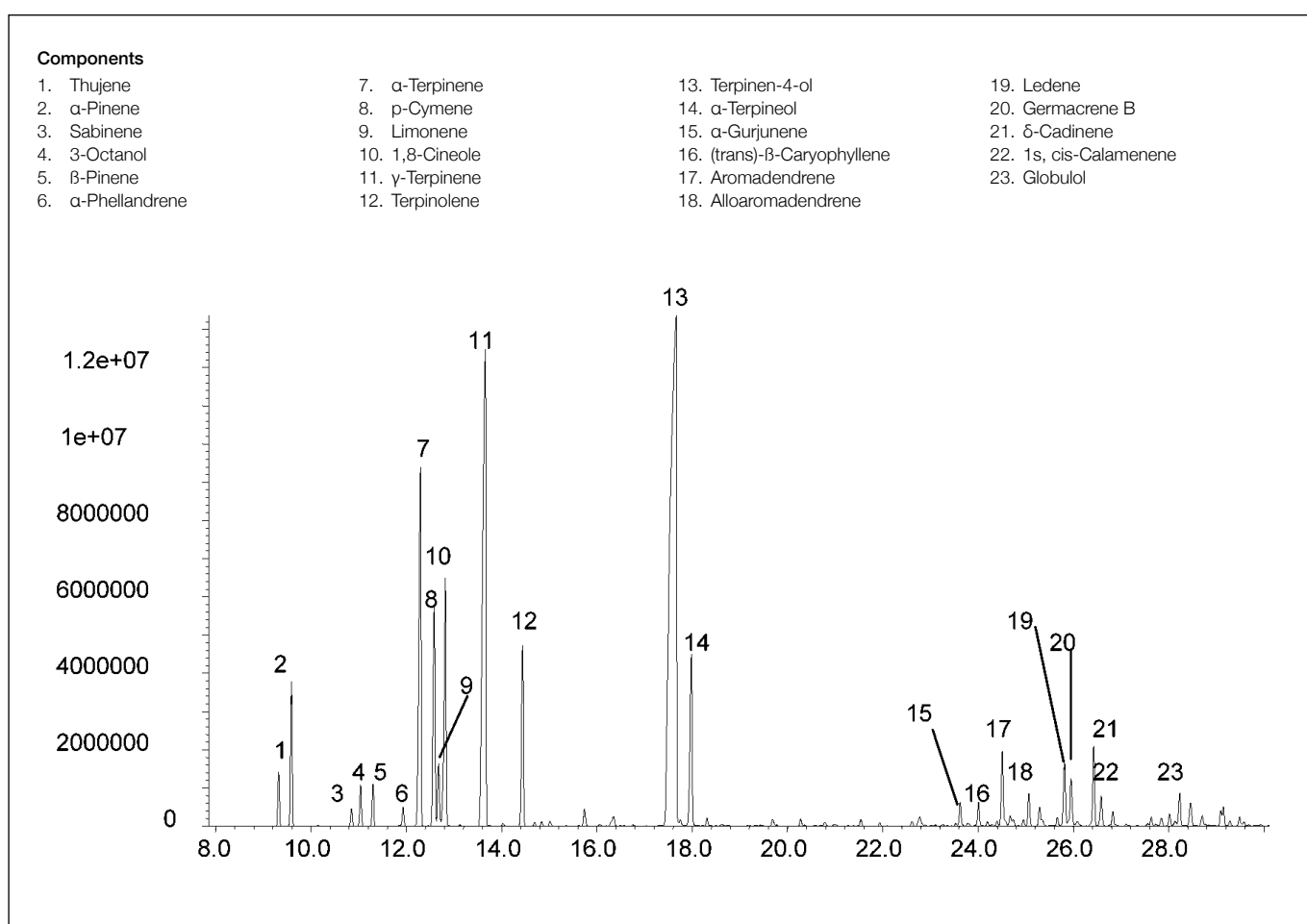
Analysis of teatree oil

BPX5

Column part number	054101		
Phase	BPX5	Carrier gas flow	1.0 mL/min
Column	30 m x 0.25 mm x 0.25 μ m	Constant flow	On
Initial temperature	40°C, 1 min	Average linear velocity	36 cm/sec at 40°C
Rate	5°C/min	Injection mode	Split (200:1), 250°C
Final temperature	200°C	Purge on (split) vent flow	200 mL/min
Detector	MS	Injection volume	0.2 μ L
Carrier gas	He, 7.0 psi	Liner type	4 mm ID double taper

Components

- | | | | |
|---------------------------|-------------------------|-------------------------------------|------------------------|
| 1. Thujene | 7. α -Terpinene | 13. Terpinen-4-ol | 19. Ledene |
| 2. α -Pinene | 8. p-Cymene | 14. α -Terpineol | 20. Germacrene B |
| 3. Sabinene | 9. Limonene | 15. α -Gurjunene | 21. δ -Cadinene |
| 4. 3-Octanol | 10. 1,8-Cineole | 16. (trans)- β -Caryophyllene | 22. 1s, cis-Calamenene |
| 5. β -Pinene | 11. γ -Terpinene | 17. Aromadendrene | 23. Globulol |
| 6. α -Phellandrene | 12. Terpinolene | 18. Alloaromadendrene | |


 For more information visit www.trajanscimed.com or contact techsupport@trajanscimed.com