

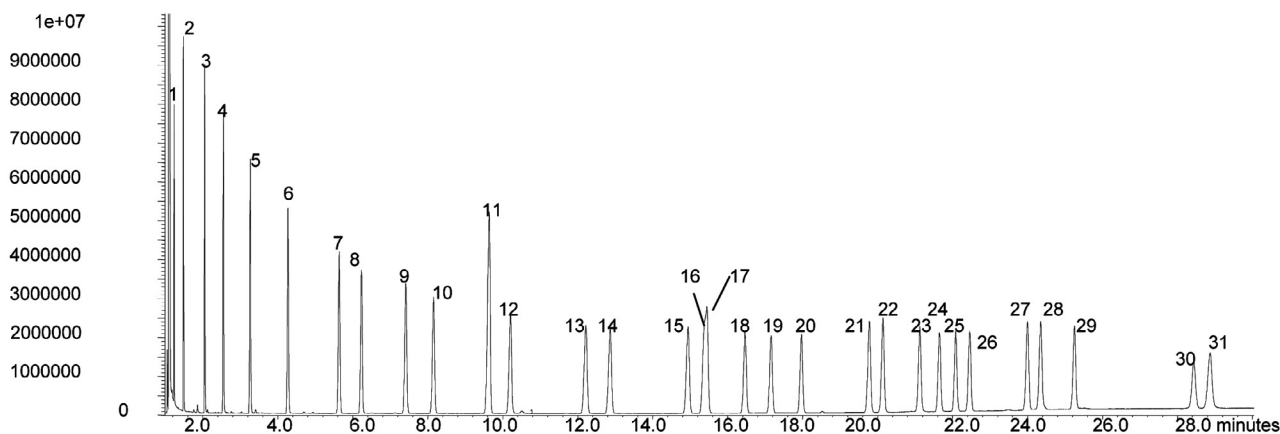
Analysis of FAME standards

SolGel-WAX™

| | | | |
|---------------------|----------------------------|-------------------------|----------------------|
| Column part number | 054796 | | |
| Phase | SolGel-WAX™ | Carrier gas | He, 35.3 psi |
| Column | 30 m x 0.25 mm x 0.25 µm | Carrier gas flow | 1.6 mL/min |
| Sample | 200 ppm in dichloromethane | Constant flow | On |
| Initial temperature | 155°C | Average linear velocity | 35 cm/sec at 155°C |
| Rate 1 | 2°C/min to 180°C | Injection mode | Split (80:1), 250°C |
| Rate 2 | 4°C/min to 220°C | Injection volume | 0.2 µL |
| Final temperature | 220°C, 5 min | Liner type | 4 mm ID double taper |
| Detector | MS | Full scan / SIM | Full scan 45-450 |

Components

- | | | |
|--------------------------------------|-------------------------------------|---|
| 1. Methyl butyrate (C4:0) | 12. Methyl palmitate (C16:0) | 23. Methyl 11,14-eicosadienoate (C20:2) |
| 2. Methyl hexanoate (C6:0) | 13. Methyl palmitoleate (C16:1) | 24. Methyl behenate (C22:0) |
| 3. Methyl octanoate (C8:0) | 14. Methyl heptadecanoate (C17:0) | 25. Methyl erucate (C22:1) |
| 4. Methyl decanoate (C10:0) | 15. Methyl stearate (C18:0) | 26. Methyl 11,14,17-eicosatrienoate (C20:3) |
| 5. Methyl undecanoate (C11:0) | 16. Methyl oleate (C18:1) | 27. Methyl homogamma linolenate (C20:3) |
| 6. Methyl laurate (C12:0) | 17. Methyl elaidate (C18:1T) | 28. Methyl arachidonate (C20:4) |
| 7. Methyl tridecanoate (C13:0) | 18. Methyl linoleate (C18:2) | 29. Methyl nervonate (C24:1) |
| 8. Methyl myristate (C14:0) | 19. Methyl linolenate (C18:3) | 30. Methyl docosadienoate (C22:2) |
| 9. Methyl myristoleate (C14:1) | 20. Methyl gamma linolenate (C18:3) | 31. Methyl docosahexenoate (C22:6) |
| 10. Methyl pentadecanoate (C15:0) | 21. Methyl arachidate (C20:0) | |
| 11. Methyl 10-pentadecenoate (C15:1) | 22. Methyl 11-eicosenoate (C20:1) | |


 For more information visit www.trajanscimed.com or contact techsupport@trajanscimed.com