

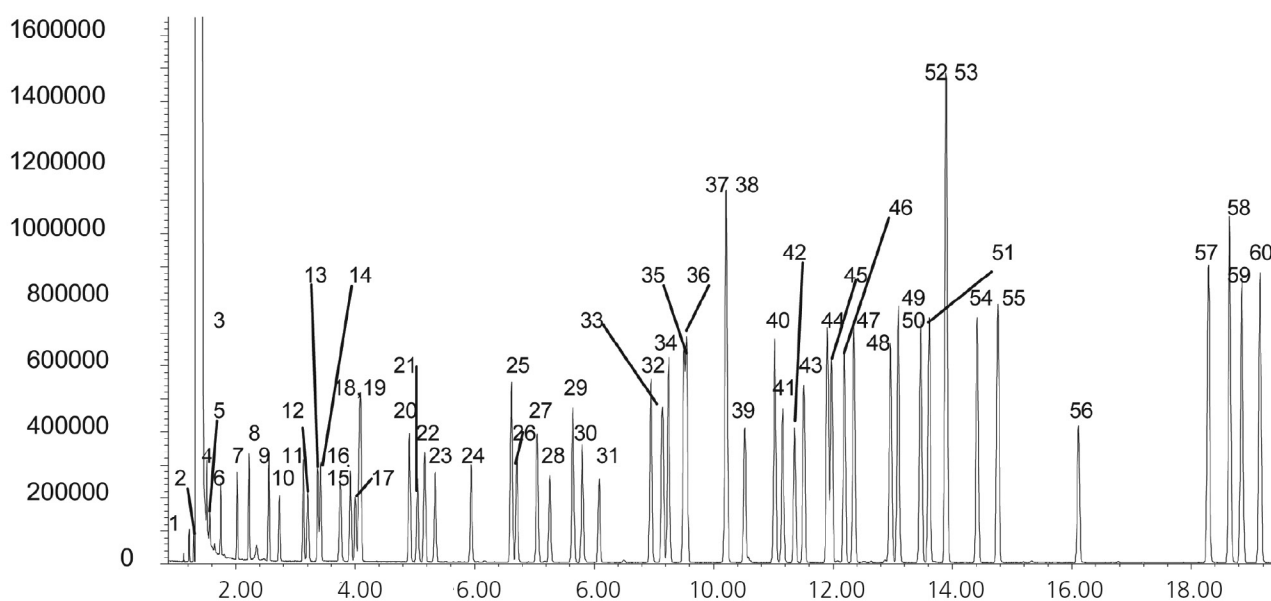
Analysis of USEPA 502.2 mix

BPX5

Column part number	054122		
Phase	BPX5	Carrier gas flow	1.8 mL/min
Column	30 m x 0.25 mm x 1.0 µm	Constant flow	On
Sample	200 ppm in methanol	Average linear velocity	35 cm/sec at 40°C
Initial temperature	40°C, 1 min	Injection mode	Split (100:1)
Rate 1	6°C/min to 210°C	Injection volume	1 µL
Rate 2	15°C/min to 260°C	Injection temperature	250°C
Final temperature	260°C, 5 min	Autosampler	No
Detector	MS	Liner type	4 mm ID Single Taper
Carrier gas	He, 25.7 psi	Full scan / SIM	Full scan 45-450

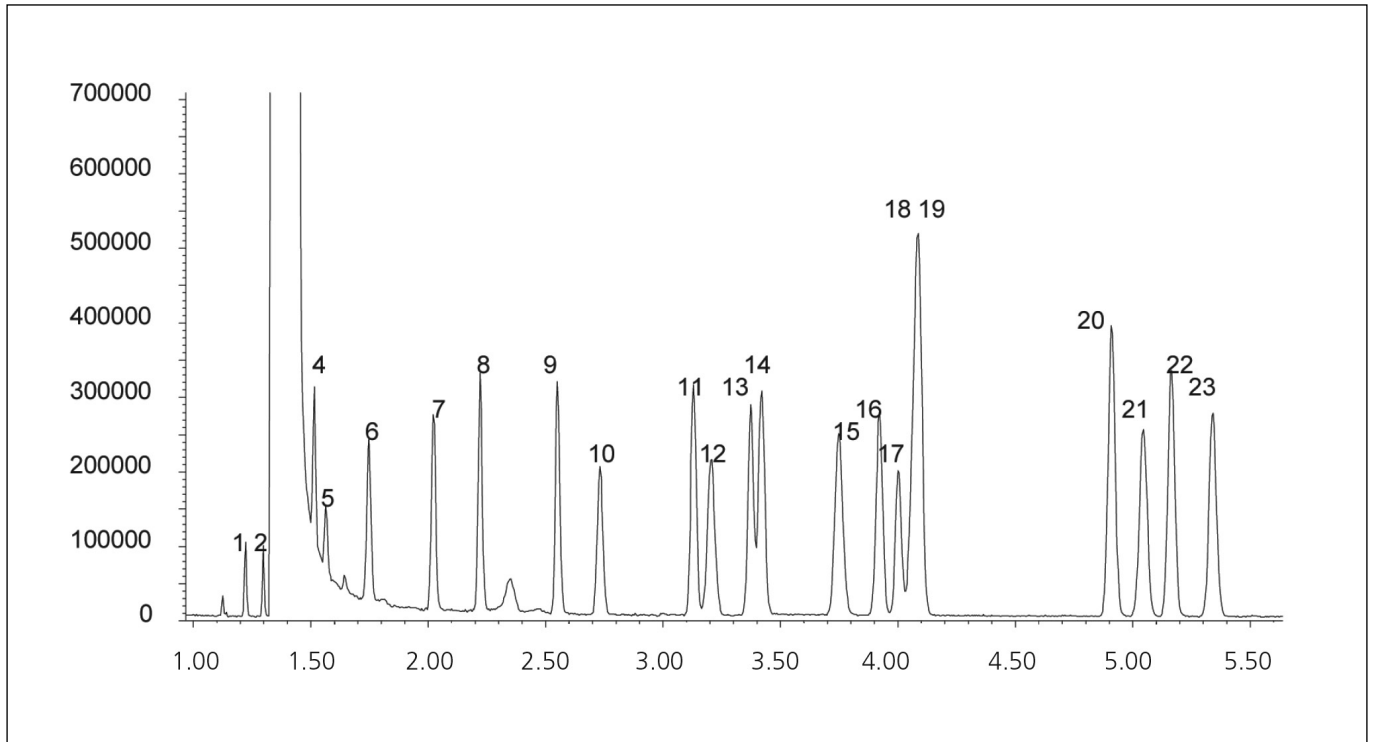
Components

1. Dichlorodifluoromethane	16. 1,2-Dichloro-1-Propene	31. 1,2-Dibromoethane	46. 4-Chlorotoluene
2. Chloromethane	17. 1,2-Dichloroethane	32. Chlorobenzene	47. 1,3,5-Trimethylbenzene
3. Chloroethene	18. Carbon tetrachloride	33. 1,1,1,2-Tetrachloroethane	48. t-Butylbenzene
4. Bromomethane	19. Benzene	34. Ethylbenzene	49. 1,2,4-Trimethylbenzene
5. Chloroethane	20. Trichloroethene	35. m-Xylene	50. sec-Butylbenzene
6. Trichlorofluoromethane	21. 1,2-Dichloropropane	36. p-Xylene	51. 1,2-Dichlorobenzene
7. 1,1-Dichloroethene	22. Dibromomethane	37. Styrene	52. Isopropyltoluene
8. Dichloromethane	23. Bromodichloromethane	38. o-Xylene	53. 1,3-Dichlorobenzene
9. 1,2-Dichloroethene (E)	24. 1,3-Dichloropropene (Z)	39. Bromoform	54. 1,4-Dichlorobenzene
10. 1,1-Dichloroethane	25. Toluene	40. Isopropylbenzene	55. Butyl benzene
11. 1,2-Dichloroethene (Z)	26. 1,3-Dichloro-1-propene (E)	41. 1,1,2,2-Tetrachloroethane	56. 1,2-Dibromo-3-chloropropane
12. 2,2-Dichloropropane	27. 1,1,2-Trichloroethane	42. 1,2,3-Trichloropropane	57. 1,2,4-Trichlorobenzene
13. Bromochloromethane	28. 1,3-Dichloropropane	43. Bromobenzene	58. Naphthalene
14. Chloroform	29. Tetrachloroethene	44. n-Propylbenzene	59. Hexachlorobutadiene
15. 1,1,1-Trichloroethane	30. Dibromochloromethane	45. 2-Chlorotoluene	60. 1,2,3-Trichlorobenzene



Analysis of USEPA 502.2 mix

BPX5



For more information visit www.trajanscimed.com or contact techsupport@trajanscimed.com