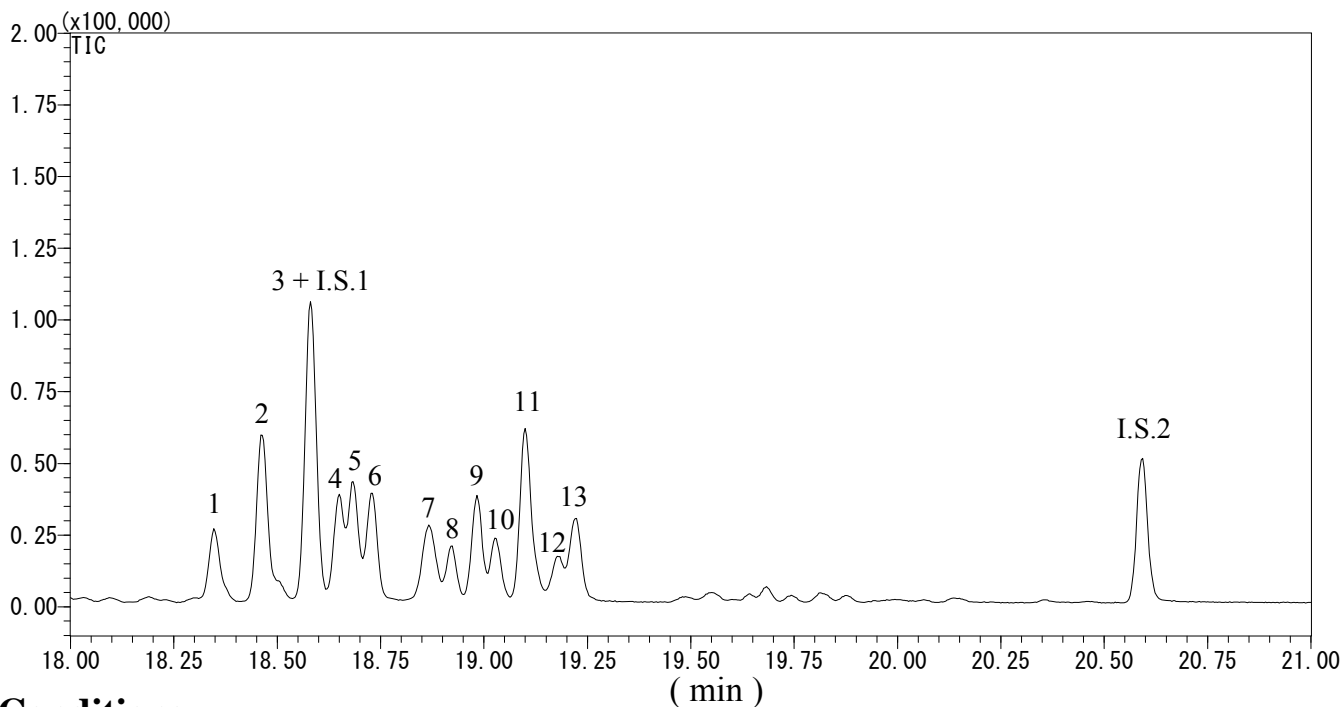


# InertSearch™ for GC

InertCap® Applications

## 4-Nonylphenol

Data No. GA 241-0644



### Conditions

**System** : GC-MS

**Column** : InertCap 5MS/NP  
0.25 mm I.D. x 30 m df = 0.25 µm

**Col. Cat. No.** : 1010-18642

**Col. Temp.** : 50 °C(1 min hold) - 8 °C/min - 280 °C

**Carrier Gas** : He 36.3 cm/sec

**Injection** : Splitless 1min  
250 °C

**Detection** : MS SIM  
Interface Temp. 280 °C

**Sample Size** : 1 µg/mL (Isomer Mixture) in Dichloromethane  
1 µL

**Analyte** :

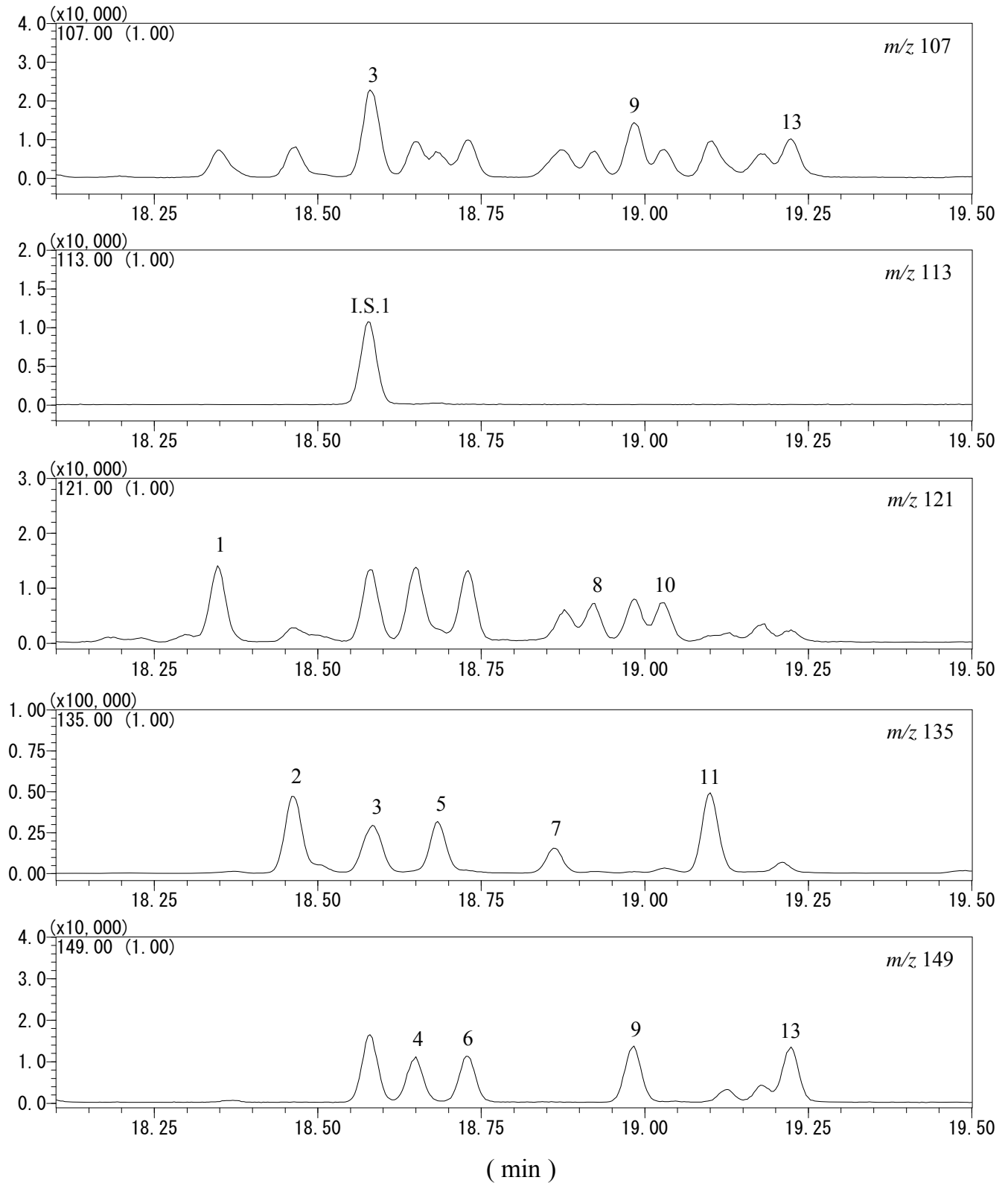
1. 4-(2,4-Dimethylheptan-4-yl)phenol	I.S.1. 4-(3,6-Dimethyl-3-heptyl)phenol
2. 4-(2,4-Dimethylheptan-2-yl)phenol	-ring- <sup>13</sup> C <sub>6</sub> (0.1 µg/mL)
3. 4-(3,6-Dimethylheptan-3-yl)phenol	I.S.2. 4- <i>n</i> -Nonylphenol- <i>d</i> 4 (0.1 µg/mL)
4. 4-(3,5-Dimethylheptan-3-yl)phenol	
5. 4-(2,5-Dimethylheptan-2-yl)phenol	
6. 4-(3,5-Dimethylheptan-3-yl)phenol	
7. 4-(3-Ethyl-2-methylhexane-2-yl)phenol	
8. 4-(3,4-Dimethylheptan-4-yl)phenol	
9. 4-(3,4-Dimethylheptan-3-yl)phenol	
10. 4-(3,4-Dimethylheptan-4-yl)phenol	
11. 4-(2,3-Dimethylheptan-2-yl)phenol	
12. 4-(3-Methyloctan-3-yl)phenol	
13. 4-(3,4-Dimethylheptan-3-yl)phenol	

# InertSearch™ for GC

InertCap® Applications

## 4-Nonylphenol

Data No. GA 216-0644



# InertSearch™ for GC

InertCap® Applications

## 4-Nonylphenol

Data No. GA 216-0644

