

LCMS-2020

Liquid Chromatograph Mass Spectrometer



Seeing is Believing.

UFscanning

15,000 u/sec high-speed scanning

UFswitching

15 milliseconds high-speed polarity ionization switching time

UFsensitivity

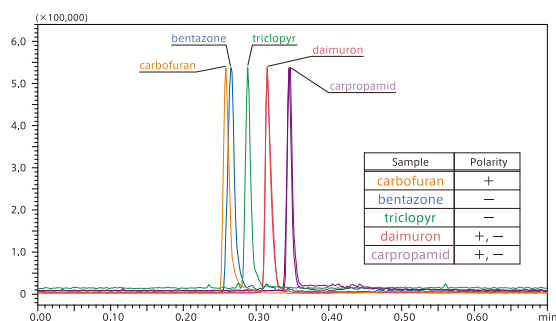
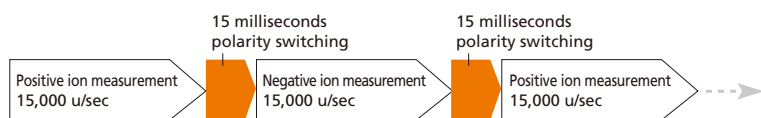
High-speed analysis with high sensitivity

UFscanning & UFswitching

UFLC/MS Measurement

UFscanning and UFswitching are critical for ultra-fast analysis.

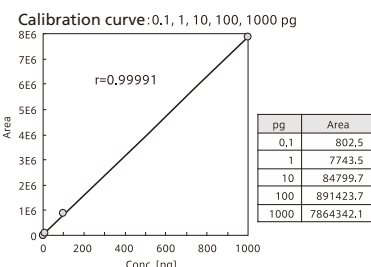
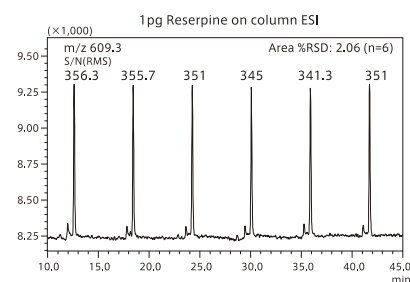
In ultra-fast analysis where multicomponent may elute within 1 minute, ultra-fast (MS measurement) detection is also required. The UFswitching and UFscanning functions are what make possible such ultra-fast MS measurement.



UFsensitivity

Ultra-fast analysis with excellent sensitivity

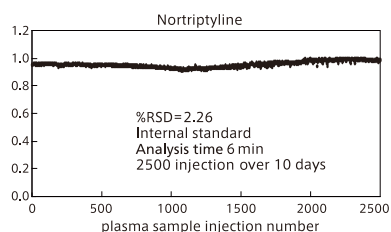
Newly developed ion optical system and new Qarray® optics provide excellent sensitivity, repeatability and linearity, even in ultra-fast analysis.



Hardware features that powerfully support 3 types of UF functionality

Toughness against dirty samples

In order to check toughness of LCMS-2020 against dirty samples, plasma samples simply precipitated with only acetonitrile were injected 2,500 times over 10 days (1L volume per injection). Excellence reproducibility of peak area was demonstrated and its RSD was 2.26%.



Easy Maintenance

The DL capillary (desolvation line), which transfers the sample into the vacuum chamber from the ion source, can be installed and removed without breaking the vacuum, greatly speeding maintenance operations.



Company names, product/service names and logos used in this publication are trademarks and trade names of Shimadzu Corporation and its affiliates, whether or not they are used with trademark symbol "TM" or "®". Third-party trademarks and trade names may be used in this publication to refer to either the entities or their products/services. Shimadzu disclaims any proprietary interest in trademarks and trade names other than its own.

For Research Use Only. Not for use in diagnostic procedures. The contents of this publication are provided to you "as is" without warranty of any kind, and are subject to change without notice. Shimadzu does not assume any responsibility or liability for any damage, whether direct or indirect, relating to the use of this publication.