

Don't Let HF Digests or Difficult Matrices Degrade Performance and Flexibility

New Agilent inert ICP-OES spray chamber



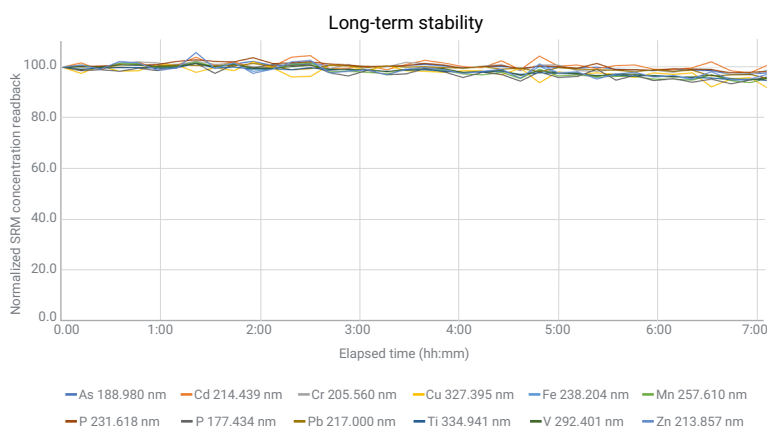
Frustrated with your spray chamber's limited flexibility, or performance degradation over time?

We have a better solution for you. The internal surfaces of the Agilent inert ICP-OES spray chamber are permanently treated for optimum drainage and continuous accurate performance.

Advantages include:

- **Longer lifetime.** The inert construction ensures improved durability with organic solvents and aggressive acids—even HF.
- **Greater flexibility.** A removable baffle lets you switch between single- and double-pass operation.
- **Less downtime.** The threaded lid simplifies maintenance with tool-free disassembly and assembly. You can easily remove the drain fitting as well.

What's more, you don't have to send the spray chamber away for periodic rejuvenation of the internal coating. That means more uptime and lower operating costs for your lab.



The Agilent inert spray chamber provides excellent long-term stability for repeated measurement of an HF-digested soil SRM over 7 hours.

Excellent stability with HF-digested soils

A standard reference material (NIST SRM 2710a Montana I soil) was digested in HF and analyzed after four measurements of HF-digested soil samples (around every 12 minutes). Excellent long-term stability was achieved over more than seven hours of operation—with the recovery for all elements well within $\pm 10\%$ of the certified value, and a precision of less than 3% RSD for all measurements over the seven hours. No recalibration or reslope applied.

Ordering guide

The Agilent inert ICP-OES spray chamber is ideal for:

- Agilent 5100/5110 and 5800/5900 ICP-OES instruments
- Agilent 4200/4210 MP-AES instruments

It is also retrofittable to earlier Agilent 700/Vista and Liberty Series ICP-OES instruments (adapter required).

Description

Part Number

Inert spray chamber

G8014-68002

- For Agilent 5000 Series ICP-OES and 4200/4210 MP-AES systems
- Double-pass design with removable baffle and ball joint outlet
- Recommended for HF digests, high TDS, and wear metal samples



Inert spray chamber adapter kit

G8460-68001

- For Agilent 700, Vista, and Liberty Series ICP-OES systems: purchase this adapter kit to use the inert spray chamber (G8014-68002) with your instrument
- Includes mounting bracket*, plus a ball joint adapter that connects to the FEP transfer tube



*Fits to the mounting bracket for the Sturman-Masters spray chamber. Order this separately if required (p/n 410328600 for axial systems or p/n 410298400 for radial systems).

Experience greater flexibility and less downtime.

Order your inert spray chamber at

www.agilent.com/chem/inert-spray-chamber

DE.2923611111

This information is subject to change without notice.

© Agilent Technologies, Inc. 2020
Published in the USA, August 14, 2020
5994-2263EN