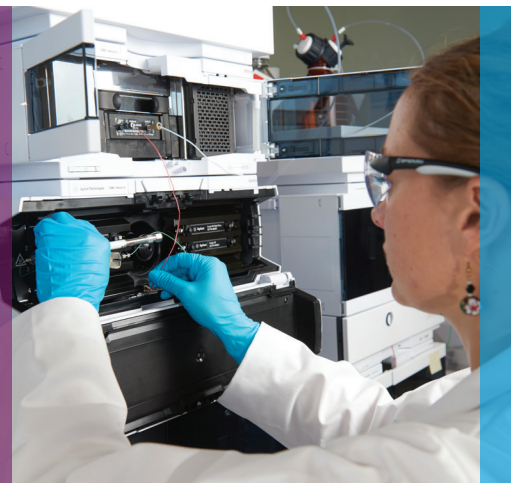


Improve performance for basic analytes with low ionic strength mobile phases

InfinityLab Poroshell 120 CS-C18 columns



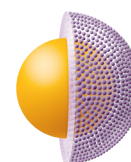
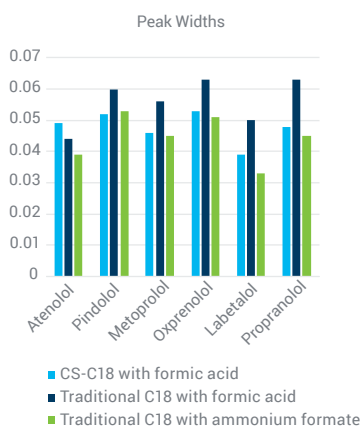
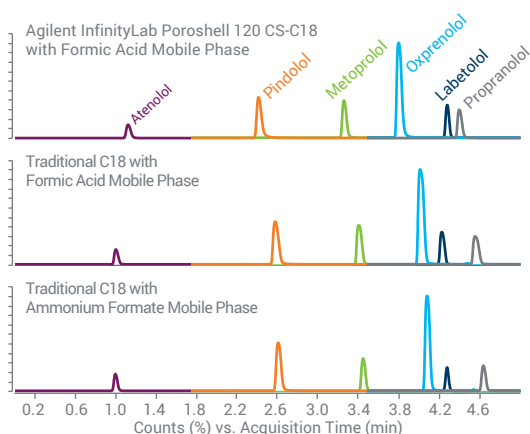
LC and LC/MS method developers across industries need to create fast, reproducible and easily transferable methods. Now with InfinityLab Poroshell 120 CS-C18 columns you can achieve excellent peak shape for basic compounds while using low ionic strength mobile phases, like formic acid. Don't compromise on the simplicity of your method to achieve the results you need.

Agilent
InfinityLab

InfinityLab Poroshell 120 CS-C18 columns enable:

- Excellent peak shape with simple to use low ionic strength mobile phases
- Improved performance at high sample loads for basic analytes
- Flexibility and robustness during method development with high and low pH stability
- Alternative selectivity to traditional C18 columns for improved separation of critical components
- Peak lined options for excellent peak shape and recovery of metal sensitive compounds

InfinityLab Poroshell 120 CS-C18 provides better peak shape for basic analytes with formic acid mobile phase than a traditional C18 without reduction in sensitivity



Achieve UHPLC Performance at HPLC Pressures

Superficially porous Poroshell 2.7 μm particle technology provides comparable speed and resolution to sub 2- μm totally porous particle columns with 50% less back pressure for easy transferability between systems.

Learn more:

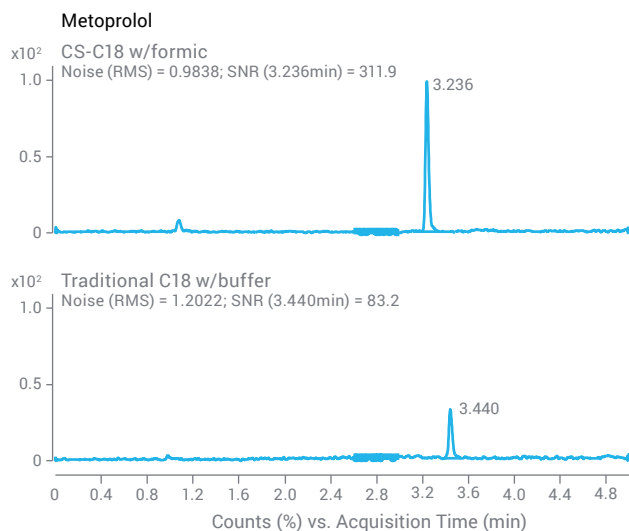
www.agilent.com/chem/discoverporoshell

Learn more in [application note 5994-2094EN](#).

 **Agilent**
Trusted Answers

LC/MS Sensitivity Comparison

The Agilent InfinityLab Poroshell 120 CS-C18 performs best with the formic acid mobile phase, while the traditional C18 performs best with ammonium formate. However, sensitivity is reduced for the traditional C18 due to ion suppression from the ammonium formate mobile phase.



Learn more in [application note 5994-2094EN](#)

Reliable, efficient, always innovating for your best result

You can rely on Agilent InfinityLab LC instruments, columns, and supplies to deliver rugged quality and robust analytical results. But our promise to you does not stop there. Every component of the Agilent InfinityLab LC family is uniquely designed to work together, and to help you continuously improve your workflow, for efficiency gains that help you get more done and reduce operational costs.



www.agilent.com/chem/InfinityLab

Learn more:

www.agilent.com/chem/PoroshellCS-C18

This information is subject to change without notice.

© Agilent Technologies, Inc. 2020
Published in the USA, October 13, 2020
5994-2720EN
DE.2590162037

Ordering Information

InfinityLab Poroshell 120 2.7 μ m columns

Size	CS-C18	CS-C18 (PEEK-lined)
2.1 x 50	699775-942	679775-942
2.1 x 100	695775-942	675775-942
2.1 x 150	693775-942	
3.0 x 50	699975-342	
3.0 x 100	695975-342	
3.0 x 150	693975-342	
4.6 x 50	699975-942	
4.6 x 100	695975-942	
4.6 x 150	693975-942	

InfinityLab Poroshell 120 2.7 μ m Fast Guards

Size	CS-C18
2.1 x 5	821725-953
3.0 x 5	823750-949
4.6 x 5	820750-939

