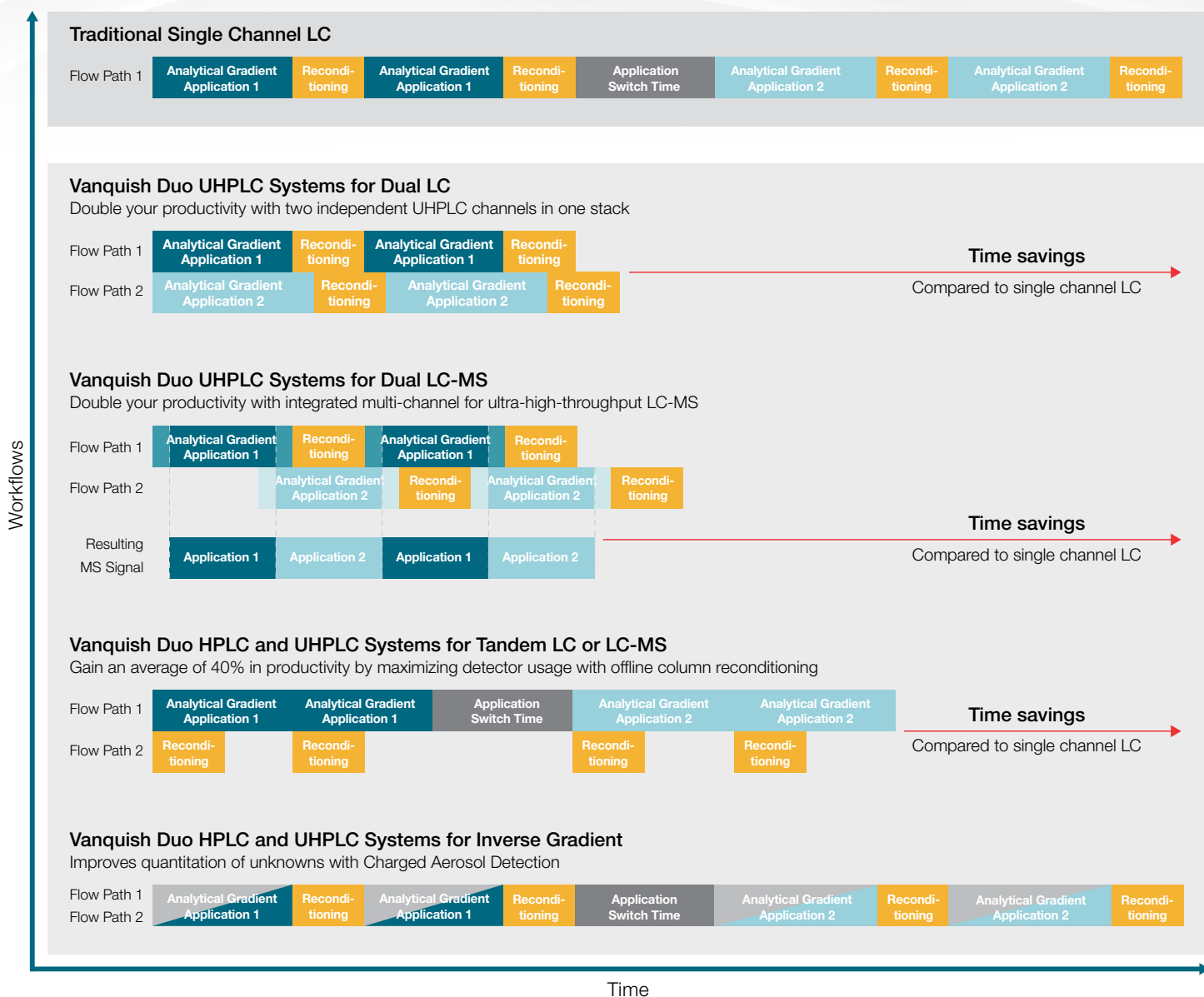


HPLC and UHPLC

Improve with flexibility


Benefits of Vanquish Duo System workflows compared to single channel LC



Vanquish Duo HPLC and UHPLC Systems


Vanquish Duo for Dual LC

Double your throughput, deepen your sample knowledge, and better utilize your bench space with the Thermo Scientific™ Vanquish™ Duo for Dual LC workflow. Two completely independent flow paths for maximum productivity.

 Learn more

Vanquish Duo for Dual LC-MS


Double the throughput of your LC-MS application with the Vanquish Duo for Dual LC-MS. Run up to two applications simultaneously with a multi-channel LC while benefiting from the robustness, performance, and ease-of-use inherent of the Vanquish LC platform.

 Learn more

Vanquish Duo for Tandem LC or LC-MS


Gain an average of 40% in throughput depending on method conditions with the Vanquish Duo for Tandem LC or LC-MS workflow.* Maximize the utilization of your optical detector or mass spectrometer.*

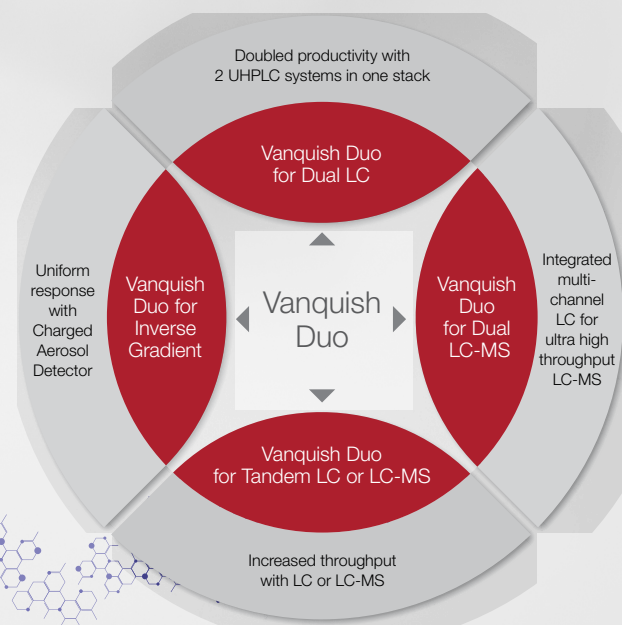
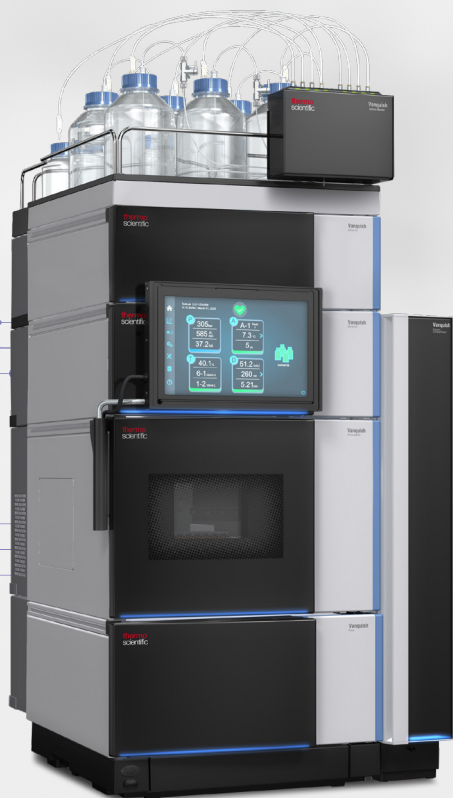
* TN72203: Tandem UHPLC operation for high-throughput LC-MS peptide mapping analyses.

 Learn more

Vanquish Duo for Inverse Gradient LC

Improve your lab's quantification capabilities with the Vanquish Duo for Inverse Gradient, employing the unique and universal Charged Aerosol Detection, to quantify all non-volatile and semi-volatile compounds even when no individual reference standard is available.

 Learn more



 Learn more at thermofisher.com/VanquishDuo

thermo scientific