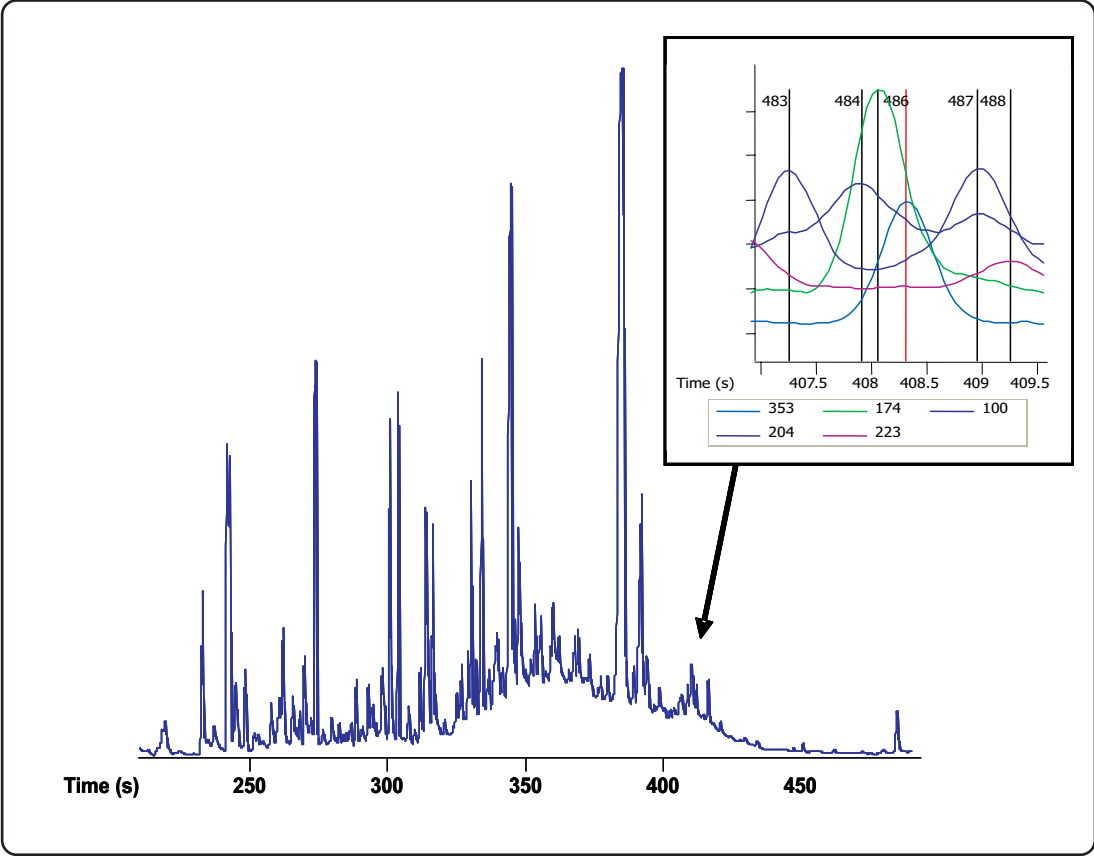


SBSE-GC-TOFMS Analysis Showing Deconvolution of Heptachlor Epoxide in Brewed Green Tea

Life Science and Chemical Analysis Centre
LECO Corporation, Saint Joseph, Michigan USA



Total Ion Chromatogram of a brewed green tea sample by SBSE-GC-TOFMS analysis. Shown above is a 3 second zoomed-in window of 100 ppt for Heptachlor Epoxide with a quant mass of $m/z = 335$ (Peak 486).

Column:
20 m x 0.18 mm x 0.18 μm Rxi-5ms

TOFMS:
45 to 450 m/z @ 5 spectra/s

For questions on this analysis e-mail us at:
life_science@leco.com

For a complete listing of snapshots and application notes visit us on the web at www.leco.com

