

# Application

Note  
11

## Solid Phase Microextraction of Volatile Compounds

*Solid phase microextraction eliminates most of the drawbacks to purge and trap sample preparation techniques. The volatile compounds listed in US EPA Method 524.2 (a drinking water analysis) were analyzed by using SPME-capillary GC-MS.*

### Key Words:

- volatile organic compounds
- solid phase microextraction
- water analysis

In analyses of organic compounds in water samples, purge and trap or headspace methods for concentrating volatiles, and liquid-liquid or solid phase extraction methods for semivolatiles/nonvolatiles have various drawbacks, including cost and excessive preparation time. Solid phase microextraction (SPME)\* requires no solvents or complicated apparatus, can be used to concentrate volatile or nonvolatile compounds in either liquid or gaseous samples, provides linear results over a wide range of analyte concentrations (down to parts per trillion for some compounds), and can be used with any gas chromatograph or gas chromatograph-mass spectrometer system (1-4). The technique has the potential for meeting detection limits specified by US Environmental Protection Agency methods and the Ontario Municipal/Industrial Strategy for Abatement program.

We analyzed the volatile compounds listed in US EPA Method 524.2 (a drinking water analysis), using SPME to introduce the analytes onto the column. The analytes in Figure A were extracted from the

sample by immersing a 100µm polydimethylsiloxane (PDMS) SPME fiber in the sample for 5 minutes. Without cryogenic focusing, even the early eluting VOCs were resolved and exhibited fairly sharp peaks (inset, Figure A). When we cooled the column to 10°C, peaks for these early eluting components were sharpened, affording lower detection limits.

To investigate potentials for improving volatiles collection, we compared the advantages of sampling the headspace to immersing the fiber in the water sample, using selected volatile compounds (Table 1). High positive numbers for the % difference for the means indicate a favorable extraction in the headspace; high negative numbers indicate better recovery by direct immersion. Differences might be attributed to differences in analyte density or solubility in water.

SPME shows potential for screening samples prior to GC-MS analysis, particularly for EPA Method 624 (wastewater) analytes. A sample could be extracted in 1-3 minutes and injected onto a short column with the effluent split to two detectors (e.g., FID and ECD). Samples containing high concentrations of contaminants (100-2000ppb) could be identified and properly diluted for GC-MS. This could reduce downtime required to clean the MS source and eliminate the need to re-analyze samples, allowing more samples to be analyzed per day.

As with purge and trap techniques, detection limits for SPME differ from compound to compound. In SPME, detection limits depend on the distribution constants and polarity of the analytes. With a 100µm PDMS fiber, nonpolar compounds with high distribution

**Table 1. Relative Responses for Volatile Compounds Extracted by SPME**

Compound	Headspace Sampling			Immersion Sampling			% Diff. for Means
	Mean	Std. Dev.	%RSD	Mean	Std. Dev.	%RSD	
1,1-Dichloroethene	0.18	0.01	6.7	0.18	0.01	7.3	0
2,2-Dichloropropane	0.29	0.02	6.3	0.54	0.06	10.4	-82 □
Chloroform	0.19	0.01	5.7	0.18	0.03	16.3	4
Bromodichloromethane	0.06	0.01	11.2	0.04	0.00	8.8	21 ■
1,1,1-Trichloroethane	0.40	0.03	8.6	0.72	0.06	7.8	-80 □
Carbon tetrachloride	0.42	0.05	12.0	0.89	0.15	17.2	-112 □
Benzene	0.81	0.02	2.8	0.83	0.01	1.4	-2
Fluorobenzene	1.00	0.00	0.0	1.00	0.00	0.0	0
Toluene	2.35	0.08	3.3	2.38	0.20	8.6	-1
Tetrachloroethene	1.15	0.08	6.9	1.16	0.17	14.3	-1
Ethylbenzene	6.49	0.25	3.8	5.27	0.50	9.5	19 ■
Styrene	3.43	0.18	5.2	2.47	0.18	7.4	28 ■
Bromoform	0.20	0.02	8.8	0.12	0.01	9.1	40 ■
Bromobenzene	1.47	0.11	7.6	0.99	0.01	0.6	33 ■
1,2,4-Trimethylbenzene	14.98	0.87	5.8	6.69	0.15	2.3	55 ■
n-Butylbenzene	32.58	2.60	8.0	11.30	1.56	13.8	65 ■
1,2,4-Trichlorobenzene	11.64	0.69	6.0	3.28	0.29	8.9	72 ■
Naphthalene	15.75	0.95	6.1	8.16	0.38	4.6	48 ■

Data for 3 SPME fibers, two samplings per fiber.

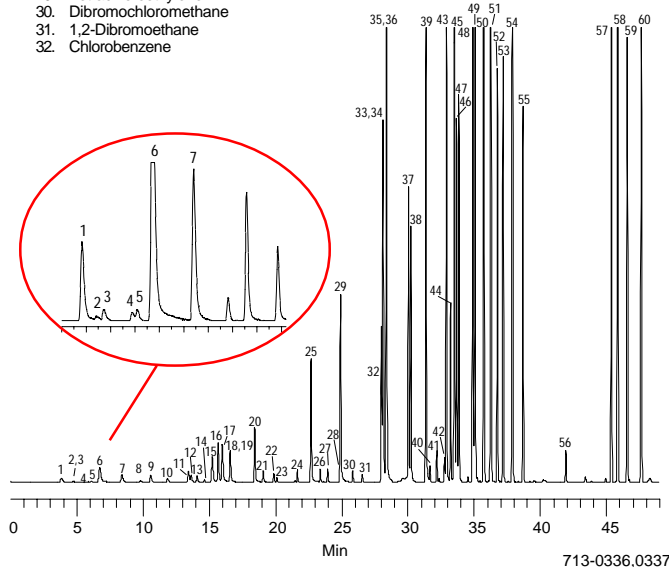
□ Immersion sampling preferred.

■ Headspace sampling preferred.

## Figure A. US EPA Method 524.2 Volatile Analytes

Sample: 50ppb each analyte in 20mL water  
 SPME Fiber: polydimethylsiloxane, 100µm film  
 Cat. No.: 57300-U  
 Sampling: 5 min  
 Desorption: 6 min, 220°C, split/splitless  
 (splitter vent closed 6 min, then vented at 100mL/min)  
 Column: VOCOL, 60m x 0.25mm ID, 1.5µm film  
 Cat. No.: 24154  
 Col. Temp.: 35°C (4 min) to 200°C at 4°C/min  
 Carrier: helium, 2mL/min  
 Det.: MS (m/z = 35-260 at 0.6 sec/scan)

- |                               |                                 |
|-------------------------------|---------------------------------|
| 1. Dichlorodifluoromethane    | 33. 1,1,1,2-Tetrachloroethane   |
| 2. Chloromethane              | 34. Ethylbenzene                |
| 3. Vinyl chloride             | 35. m-Xylene                    |
| 4. Bromomethane               | 36. p-Xylene                    |
| 5. Chloroethane               | 37. o-Xylene                    |
| 6. Trichlorofluoromethane     | 38. Styrene                     |
| 7. 1,1-Dichloroethylene       | 39. Isopropylbenzene            |
| 8. Methylene chloride         | 40. Bromoform                   |
| 9. trans-1,2-Dichloroethylene | 41. 1,1,2,2-Tetrachloroethane   |
| 10. 1,1-Dichloroethane        | 42. 1,2,3-Trichloropropane      |
| 11. 2,2-Dichloropropane       | 43. n-Propylbenzene             |
| 12. cis-1,2-Dichloroethylene  | 44. Bromobenzene                |
| 13. Chloroform                | 45. 1,3,5-Trimethylbenzene      |
| 14. Bromochloromethane        | 46. 2-Chlorotoluene             |
| 15. 1,1,1-Trichloroethane     | 47. 4-Chlorotoluene             |
| 16. 1,1-Dichloropropene       | 48. tert-Butylbenzene           |
| 17. Carbon tetrachloride      | 49. 1,2,4-Trimethylbenzene      |
| 18. 1,2-Dichloroethane        | 50. sec-Butylbenzene            |
| 19. Benzene                   | 51. p-Isopropyltoluene          |
| 20. Trichloroethylene         | 52. 1,3-Dichlorobenzene         |
| 21. 1,2-Dichloropropane       | 53. 1,4-Dichlorobenzene         |
| 22. Bromodichloromethane      | 54. n-Butylbenzene              |
| 23. Dibromomethane            | 55. 1,2-Dichlorobenzene         |
| 24. cis-1,3-Dichloropropene   | 56. 1,2-Dibromo-3-chloropropane |
| 25. Toluene                   | 57. 1,2,4-Trichlorobenzene      |
| 26. trans-1,3-Dichloropropene | 58. Hexachlorobutadiene         |
| 27. 1,1,2-Trichloroethane     | 59. Naphthalene                 |
| 28. 1,3-Dichloropropane       | 60. 1,2,3-Trichlorobenzene      |
| 29. Tetrachloroethylene       |                                 |
| 30. Dibromochloromethane      |                                 |
| 31. 1,2-Dibromoethane         |                                 |
| 32. Chlorobenzene             |                                 |



### Trademarks

Freon — E.I. du Pont de Nemours & Co., Inc.  
 VOCOL — Sigma-Aldrich Co.

For information about applications using other SPME fibers, call  
**800-247-6628 or 814-359-3441 (FAX 800-447-3044 or 814-359-3044).**

constants have lower minimum detection limits than more polar analytes with lower distribution constants. Branched aromatic compounds and chlorinated alkenes exhibit the lowest detection limits. The more polar Method 524.2 compounds with extremely low distribution constants (bromomethane and chloromethane) have much higher minimum detection limits. The extremely volatile compounds can begin to leave the fiber before the sample is injected. Therefore, when analyzing volatile compounds, it is best to minimize the time between extraction and desorption and to maintain consistent timing for each step.

Several factors affect the precision of the method: positioning of the fiber in the injector (it must be in the hottest part during desorption), a consistently low cryofocusing temperature, and the time lapse between analyte extraction and desorption (short lapses minimize evaporation of volatile analytes from the fiber). Precision can be increased by dividing a sample into multiple small aliquots and extracting each aliquot. A 2mL vial containing analytes with high distribution constants can be depleted after one extraction, and can be exhaustively extracted if required (1).

To begin SPME extractions, you will need both an SPME fiber assembly and a fiber holder. The fiber assembly is reusable – we recommend replacing it after 50-100 extractions. SPME can be automated in a Varian 8100 or 8200 AutoSampler, with an SPME upgrade kit to control plunger movement and timing.

### Ordering Information:

Description	Cat. No.
<b>SPME Fiber Assembly</b> 100µm polydimethylsiloxane coating, pk. of 3	
For manual sampling	57300-U
For Varian 8100/8200 AutoSampler	57301
<b>Fiber Assortment Kit</b> 100µm and 7µm PDMS, 85µm polyacrylate	
For manual sampling	57306
For Varian 8100/8200 AutoSampler	57307
<b>SPME Fiber Holder</b>	
For manual sampling	57330-U
For Varian 8100/8200 AutoSampler	57331
<b>VOCOL™ Fused Silica Capillary Column</b> 60m x 0.25mm ID, 1.5µm film	24154

\*Solid phase microextraction technology is licensed exclusively to Supelco (US patent no. 5,691,206; European patent #0523092).

Fiber assemblies with other phase coatings are available. Refer to the current Supelco catalog.

### References

1. Arthur, C.L., et al., *LC/GC* 10 (9): 656-661 (1992).
2. Arthur, C.L., et al., *Environ. Sci. & Technol.* 26: 979-983 (1992).
3. Arthur, C.L., et al., *J. High Res. Chromatogr.* 15: 741-744 (1992).
4. Arthur, C.L., et al., *Environmental Lab. Dec.* '92/Jan. '93, 10-14.

References not available from Supelco.

Note 11

For more information, or current prices, contact your nearest Supelco subsidiary listed below. To obtain further contact information, visit our website ([www.sigma-aldrich.com](http://www.sigma-aldrich.com)), see the Supelco catalog, or contact Supelco, Bellefonte, PA 16823-0048 USA.

ARGENTINA · Sigma-Aldrich de Argentina, S.A. · Buenos Aires 1119 AUSTRALIA · Sigma-Aldrich Pty. Ltd. · Castle Hill NSW 2154 AUSTRIA · Sigma-Aldrich Handels GmbH · A-1110 Wien  
 BELGIUM · Sigma-Aldrich N.V./S.A. · B-2880 Bornem BRAZIL · Sigma-Aldrich Quimica Brasil Ltda. · 01239-010 São Paulo, SP CANADA · Sigma-Aldrich Canada, Ltd. · 2149 Winston Park Dr., Oakville, ON L6H 6J8  
 CZECH REPUBLIC · Sigma-Aldrich s.r.o. · 186 00 Praha 8 DENMARK · Sigma-Aldrich Denmark A/S · DK-2665 Vallensbaek Strand FINLAND · Sigma-Aldrich Finland/YA-Kemia Oy · FIN-00700 Helsinki  
 FRANCE · Sigma-Aldrich Chimie · 38297 Saint-Quentin-Fallavier Cedex GERMANY · Sigma-Aldrich Chemie GmbH · D-82041 Deisenhofen GREECE · Sigma-Aldrich (o.m.) Ltd. · Ilioupoli 16346, Athens  
 HUNGARY · Sigma-Aldrich Kft. · H-1067 Budapest INDIA · Sigma-Aldrich Co. · Bangalore 560 048 IRELAND · Sigma-Aldrich Ireland Ltd. · Dublin 24 ISRAEL · Sigma Israel Chemicals Ltd. · Rehovot 76100  
 ITALY · Sigma-Aldrich s.r.l. · 20151 Milano JAPAN · Sigma-Aldrich Japan K.K. · Chuo-ku, Tokyo 103 KOREA · Sigma-Aldrich Korea · Seoul MALAYSIA · Sigma-Aldrich (M) Sdn. Bhd. · Selangor  
 MEXICO · Sigma-Aldrich Quimica S.A. de C.V. · 50200 Toluca NETHERLANDS · Sigma-Aldrich Chemie BV · 3330 AA Zwijndrecht NORWAY · Sigma-Aldrich Norway · Torshov · N-0401 Oslo  
 POLAND · Sigma-Aldrich Sp. z o.o. · 61-663 Poznań PORTUGAL · Sigma-Aldrich Quimica, S.A. · Sintra 2710 RUSSIA · Sigma-Aldrich Russia · Moscow 103062 SINGAPORE · Sigma-Aldrich Pte. Ltd.  
 SOUTH AFRICA · Sigma-Aldrich (pty) Ltd. · Jet Park 1459 SPAIN · Sigma-Aldrich Quimica, S.A. · 28100 Alcobendas, Madrid SWEDEN · Sigma-Aldrich Sweden AB · 135 70 Stockholm  
 SVITZERLAND · Supelco · CH-9471 Buchs UNITED KINGDOM · Sigma-Aldrich Company Ltd. · Poole, Dorset BH12 4QH  
 UNITED STATES · Supelco · Supelco Park · Bellefonte, PA 16823-0048 · Phone 800-247-6628 or 814-359-3441 · Fax 800-447-3044 or 814-359-3044 · email: [supelco@sial.com](mailto:supelco@sial.com)

Supelco is a member of the Sigma-Aldrich family. Supelco products are sold through Sigma-Aldrich, Inc. Sigma-Aldrich warrants that its products conform to the information contained in this and other Sigma-Aldrich publications. Purchaser must determine the suitability of the product for a particular use. Additional terms and conditions may apply. Please see the reverse side of the invoice or packing slip.

AOM