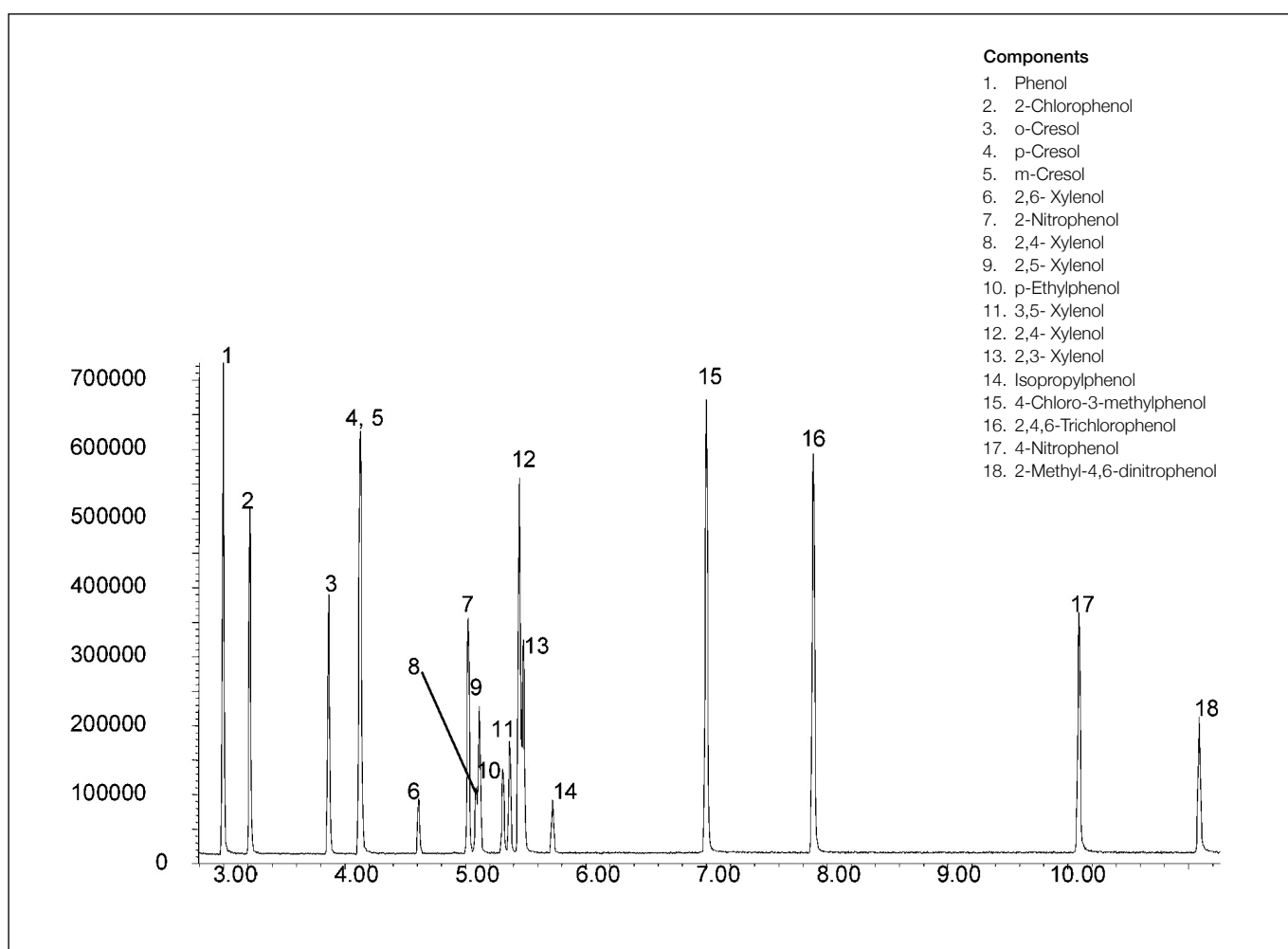


## Analysis of a phenols mixture

**BPX5**

Column part number	054101		
Phase	BPX5	Carrier gas flow	2.1 mL/min
Column	30 m x 0.25 mm x 0.25 $\mu$ m	Constant flow	On
Sample	200 ppm in methanol	Average linear velocity	35 cm/sec at 80°C
Initial temperature	80°C, 1 min	Injection mode	Split (100:1)
Rate	10°C/min	Injection volume	1 $\mu$ L
Final temperature	300°C, 5 min	Injection temperature	250°C
Detector	MS	Liner type	4 mm ID Single Taper
Carrier gas	He, 36.2 psi	Full scan / SIM	Full scan 45-450



For more information visit [www.trajanscimed.com](http://www.trajanscimed.com) or contact [techsupport@trajanscimed.com](mailto:techsupport@trajanscimed.com)