

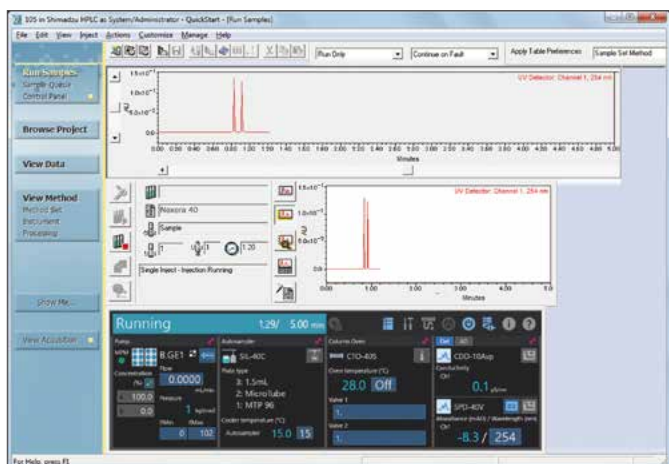
Experience New Benchmarks with Empower™ 3 Chromatography Data Software (“CDS”)

Shimadzu LC Driver Pack for Empower 3 CDS



■ Enabling Control of the Nexera™ lite inert (LC-40i/SIL-20A/SIL-20AC)

Nexera lite inert (LC-40i, SIL-20A, SIL-20AC) systems in the Shimadzu UHPLC Nexera series are now controlled from Empower 3 CDS. The cutting-edge functions of the Nexera series can be experienced first-hand with Empower 3 CDS. These include the bioinert system, intended to limit the adsorption of sample metals by configuring sample flow lines with nonmetals. In the Empower 3 CDS instrument method editing window, the Shimadzu LC instrument parameters can be configured and then saved as an instrument method. As a result, even operators who are controlling a Shimadzu LC from Empower 3 CDS for the first time can do so with confidence. The control panel displayed in the Empower 3 CDS [Run Samples] window is equipped with functions for direct control of the Shimadzu LC. It also includes a monitoring function for confirming the system’s operating status at a glance as well as system check functions for checking the usage frequency of various instrument consumables. These are useful for routine inspections of instruments prior to analysis, and for monitoring instrument operating status during analysis.



Control Panel



System Check Report

■ List of Compatible Instruments

Nexera series

Unit	Name
System controller	SCL-40 / CBM-40 / CBM-40lite
Solvent delivery unit	LC-40D / LC-40D XR / LC-40B XR / LC-40D XS / LC-40D X3/ LC-40B X3 LC-40D XSi / LC-40i / LC-20AB
Autosampler	SIL-40 / SIL-40C / SIL-40 XR / SIL-40C XR / SIL-40C XS / SIL-40C X3 / SIL-40C XSi Plate Changer SIL-30ACMP / SIL-20A / SIL-20AC
Column oven	CTO-40C / CTO-40S / CTO-30A
Chemical reaction tank	CRB-40
Detector	SPD-40 / SPD-40V / SPD-M40 / SPD-M30A / RID-20A RF-20A / RF-20AXS / AD / CDD-10Avp
Mobile phase monitor	MPM-40
Reservoir switching valve	LPGE Unit / FCV-11AL / FCV-11ALS / Switching valve
High-pressure flow line switching valve	FCV-0206 / FCV-0607 / FCV-0206H / FCV-0607H / FCV-0206H3 / FCV-0607H3 FCV-0206H2i / FCV-0607H2i FCV-36AH FCV-BOX / FCV-S

* Cannot be combined with models older than those noted above, such as the LC-30AD pump.

* Up to 4 Shimadzu LCs can be controlled via 1 PC or acquisition server (e.g. LAC/E32™). However, if 1 or 2 PDAs are connected, the maximum number of LCs is reduced to 3 or 2 respectively.

* It is not possible to simultaneously connect a Shimadzu LC and a Waters LC system via 1 PC or data acquisition server (e.g. LAC/E32). Please purchase a separate data acquisition server for the Shimadzu LC.

Nexera is a trademark of Shimadzu Corporation or its affiliated companies in Japan and/or other countries.
Empower and LAC/E32 are trademarks of Waters Corporation.



Shimadzu Corporation
www.shimadzu.com/an/

For Research Use Only. Not for use in diagnostic procedures.

This publication may contain references to products that are not available in your country. Please contact us to check the availability of these products in your country.

Company names, products/service names and logos used in this publication are trademarks and trade names of Shimadzu Corporation, its subsidiaries or its affiliates, whether or not they are used with trademark symbol "TM" or "®".

Third-party trademarks and trade names may be used in this publication to refer to either the entities or their products/services, whether or not they are used with trademark symbol "TM" or "®".

Shimadzu disclaims any proprietary interest in trademarks and trade names other than its own.

The contents of this publication are provided to you "as is" without warranty of any kind, and are subject to change without notice. Shimadzu does not assume any responsibility or liability for any damage, whether direct or indirect, relating to the use of this publication.