

# Shimadzu LC Driver Pack for LC-2050/LC-2060 and Waters™ Empower™

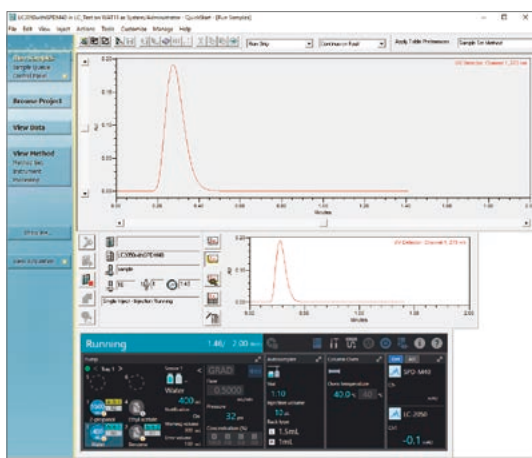


## Advanced i-Series

High Performance Liquid Chromatograph

### Experience the power and Analytical Intelligence of the LC-2050/2060 with Empower software

- The i-Series LC-2050/2060 provides not only ultra-low carryover and a temperature-resistant stable baseline, but also in-built Analytical Intelligence features such as controlled automatic start-up with FlowPilot and real-time mobile phase monitoring. With this new LC driver pack, you can take advantage of all these features in combination with Empower software.
- Setting and saving instrument parameters for the LC-2050/2060 is the same as for other vendors' LCs, making analysis simple even for first-time Shimadzu users. The LC can be controlled directly from the control panel, which also has monitoring features for checking instrument status, detector signal, etc. at a glance.
- Both single and continuous analyses can be carried out painlessly from Empower.
- Pre-analysis system checks are smoothly completed via Empower, and the results can be output as a system check report. Instrument use history and operation status can be verified and recorded easily, supporting data integrity.



Control panel

SHIMADZU System check report			
System name:	L21455800000AE		
Date checked:	12/27/2020 9:58 PM		
Performer:	System		
System check summary:	Pass		
Software name:	Shimadzu LC-iSeries(LC-2050/LC-2060)		
Software version:	1.00		
Instrument name:	LC-2050C 3D	Serial number:	L21455800000AE
Link address:		Unit ID:	VO.10
Date checked:	12/27/2020 9:58 PM	ROM version:	VO.10
Check result:			
		Result value	Criterion value
<<GENERAL>>			
IP Address	172.31.191.119		
Subnet Mask	255.255.240.0		
Default Gateway	172.31.191.254		
MAC Address	00:80:96:06:45:90		
Total Operating Time in ROM Check	1283		
(12/27/2020 9:58 PM)			Pass
RAM Check			Pass

System check report

# Shimadzu LC Driver Pack for LC-2050/LC-2060 and Waters Empower

## Supported Devices

### i-Series LC-2050/LC-2060

Unit Type	Products
i-Series	LC-2050 LC-2050C LC-2050C 3D LC-2050C LT LC-2060C LC-2060C 3D LC-2060C 3D MT
Mobile Phase Monitor	MPM-40
Detector	SPD-M40 / RID-20A / RF-20A / RF-20AXS / AD SPD-M30A / SPD-30AM
Mobile Phase Flow Line Switching Valve	FCV-11AL / FCV-11ALS
High-Pressure Flow Line Switching Valve	FCV-14AH / FCV-34AH

- A Nexera™/Prominence™/LC-2010 driver included in the package is required to use the SPD-M30A/SPD-30AM.
- Up to 4 Shimadzu LCs can be controlled via 1 PC or acquisition server (e.g. LAC/E<sup>32</sup>™). However, if 1 or 2 PDAs are connected, the maximum number of LCs is reduced to 3 or 2 respectively.
- It is not possible to control both a Shimadzu LC and other vendor's LC system via 1 PC or acquisition server (e.g. LAC/E<sup>32</sup>™). Please purchase a separate acquisition server for the Shimadzu LC.
- \* For details about drivers for other Shimadzu instruments such as the Nexera series, please contact a Shimadzu sales representative.

The Analytical Intelligence logo, Nexera and Prominence are trademarks of Shimadzu Corporation.  
Waters, Empower and LAC/E<sup>32</sup> are trademarks of Waters Corporation and its affiliates.



Shimadzu Corporation  
www.shimadzu.com/an/

#### For Research Use Only. Not for use in diagnostic procedures.

This publication may contain references to products that are not available in your country. Please contact us to check the availability of these products in your country.  
Company names, products/service names and logos used in this publication are trademarks and trade names of Shimadzu Corporation, its subsidiaries or its affiliates, whether or not they are used with trademark symbol "TM" or "®".  
Third-party trademarks and trade names may be used in this publication to refer to either the entities or their products/services, whether or not they are used with trademark symbol "TM" or "®".  
Shimadzu disclaims any proprietary interest in trademarks and trade names other than its own.

The contents of this publication are provided to you "as is" without warranty of any kind, and are subject to change without notice. Shimadzu does not assume any responsibility or liability for any damage, whether direct or indirect, relating to the use of this publication.