

Experience New Benchmarks with Empower Shimadzu's LC/GC Drivers for Waters™ Empower™

Shimadzu's LC/GC driver software is designed for customers that are considering multi-vendor support for Empower software. It provides the optimal environment for operating LC and GC systems, including the latest by enabling instrument control, sample analysis, data analysis, report output, and other operations using Empower software.



Nexera
series Ultra High Performance
Liquid Chromatograph



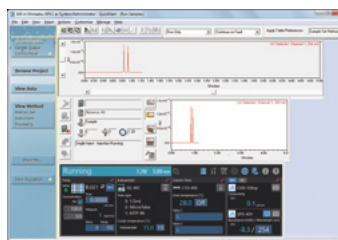
Nexis
GC-2030 Gas Chromatograph



Newest Models Compatible with Empower

Updated drivers enable control of Shimadzu's newest LC and GC systems, including the modular LC Nexera™ series models, i-Series integrated LC models, and the Nexis™ GC-2030, by Empower software. Consequently, Empower can be used to experience Shimadzu's advanced HPLC operations, such as mobile phase monitoring, dual-injection functionality for simultaneously analyzing the same sample via two separate systems, and autosampler pretreatment functionality. GC users can achieve high resolution with advanced flow technology and shorter analysis cycles by overlapping actions.

Shimadzu LC and GC system parameters can be set via the instrument method editor in Empower. As a result, users controlling Shimadzu LC or GC systems from Empower can use the driver with confidence. In addition to controlling the systems, the control panel in Empower includes functionality for monitoring system operating status at a glance, checking the usage frequency of consumables, and so on. That makes it easy to perform routine system inspection and conditioning steps prior to analysis and monitor the operating status during analysis.



Control Panel



System Check Report

Product Content

Description	Remarks
e System LAC/E ³² ™ #16	Select either two or four licenses.
Shimadzu LC Control License	One license only
Shimadzu GC Control License	One license only
Shimadzu LC Driver First-Year Support Plan	Select either one or four licenses.
Shimadzu GC Driver First-Year Support Plan	Select either one or four licenses.

* A dedicated Shimadzu LAC/E³² acquisition server is required for Empower Enterprise systems.

* Up to four Shimadzu LC or GC units can be controlled from a single computer or LAC/E³² acquisition server. However, if one or two PDA detectors are connected, then the number of LC units that can be connected is limited to three or two units.

* In addition to the system controller license included with the LAC/E³² unit, a Shimadzu LC/GC controller license is also required in order to control Shimadzu LC/GC units.

List of Drivers

LC

Driver	Main Unit
Nexera series	SCL-40 / LC-40D XR / SIL-40C XR / CTO-40C / SPD-40 / SPD-M40
Nexera / Prominence™ / LC-2010	CBM-20A / LC-30AD / SIL-30AC / CTO-20AC / SPD-20A / SPD-M30A LC-2010A / LC-2010C / LC-2010AHT / LC-2010CHT
i-Series	LC-2030 / LC-2040 / LC-2030 Plus / LC-2040 Plus
i-Series LC-2050 / LC-2060	LC-2050 / LC-2060

GC

Driver	Main Unit
Shimadzu GC Driver	GC-2030 / GC-2010 (Plus/Pro) / GC-2014 (C) / AOC™-30i / AOC-20i / AOC-20s HS-20 NX / HS-20 / HS-10 / SCD-2030

Nexera, Nexis, Prominence and AOC are trademarks of Shimadzu Corporation or its affiliated companies in Japan and/or other countries.
Waters, Empower and LAC/E³² are trademarks of Waters Corporation and its affiliates.



Shimadzu Corporation

www.shimadzu.com/an/

For Research Use Only. Not for use in diagnostic procedures.

This publication may contain references to products that are not available in your country. Please contact us to check the availability of these products in your country.

Company names, products/service names and logos used in this publication are trademarks and trade names of Shimadzu Corporation, its subsidiaries or its affiliates, whether or not they are used with trademark symbol "TM" or "®".

Third-party trademarks and trade names may be used in this publication to refer to either the entities or their products/services, whether or not they are used with trademark symbol "TM" or "®".

Shimadzu disclaims any proprietary interest in trademarks and trade names other than its own.

The contents of this publication are provided to you "as is" without warranty of any kind, and are subject to change without notice. Shimadzu does not assume any responsibility or liability for any damage, whether direct or indirect, relating to the use of this publication.