

Analyzing Sugars in Foods and Biofuels

Shim-pack™ SUR-Na Columns for Ligand Exchange Chromatography

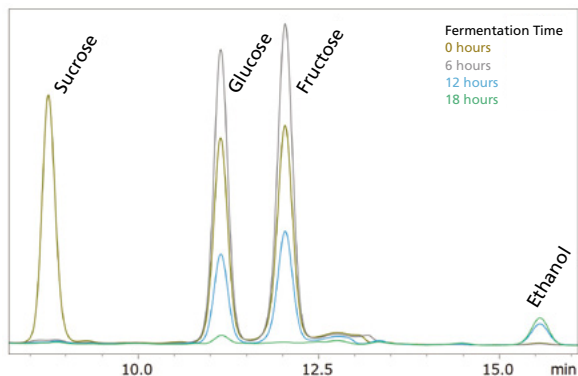
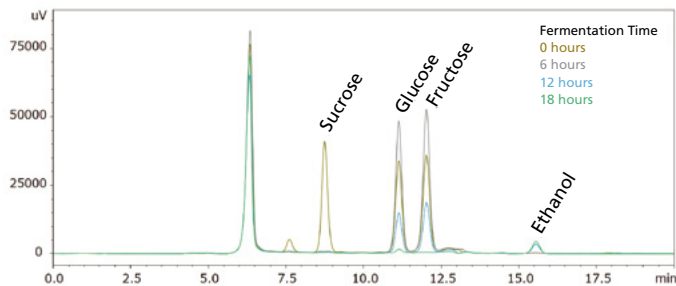
Sugar analysis is commonly conducted in a variety of markets. The ethanol production process in the food and biofuels fields, which utilizes the sugar digestion system of yeast microorganisms, requires measuring and monitoring sugar components and amounts accurately for process design and quality control.

Shim-pack SUR-Na, a ligand exchange chromatography column, offers excellent performance by combining size exclusion mode and sodium-based ligand exchange mode to provide superior separation of sugar components. Pure water can be used for the mobile phase, resulting in less effort to prepare for the analysis.

Alcohol Fermentation Monitoring by Sugar Analysis

With its high performance deriving from the combination of size exclusion and sodium-based ligand exchange modes, monosaccharides, such as glucose and fructose, can be separated, making the Shim-pack SUR-Na column ideal for the process monitoring of ethanol production via fermentation reaction with microorganisms.

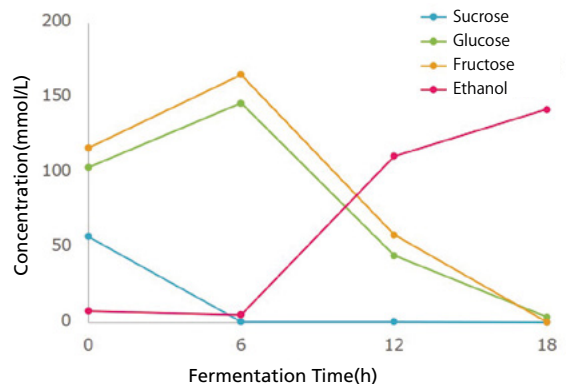
■ Chromatograms of Fermentation Culture Solution
(Upper: Entire Chromatogram; Lower: Enlargement)



■ Analysis Conditions

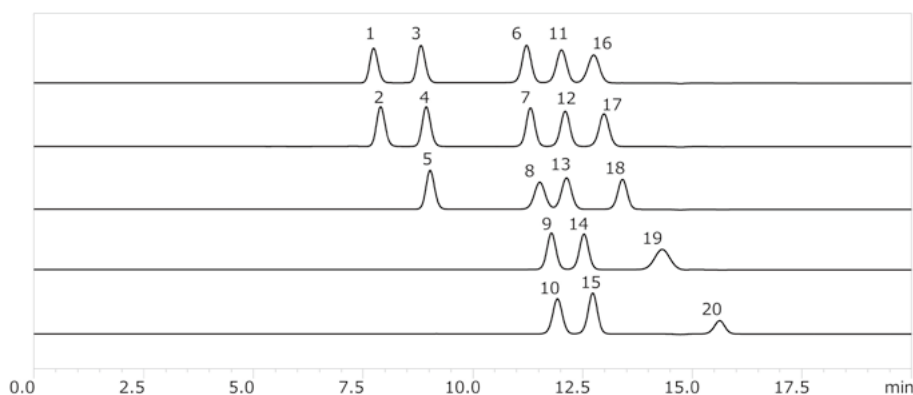
Column : Shim-pack SUR-Na
Guard column: Shim-pack SUR-Na (G)
Mobile phase : Ultrapure water
Column temp.: 80°C
Detector : RI detector (RID-20A)

■ Fermentation Monitoring Results



Separating Various Sugars

The Shim-pack SUR-Na column has superior separation performance, especially for monosaccharides, sugar alcohols, and some oligosaccharides.



1 raffinose	11 mannose
2 maltotriose	12 fructose
3 sucrose	13 xylose
4 maltose	14 xylitol
5 lactose	15 inositol
6 glucose	16 fucose
7 mannitol	17 arabinose
8 rhamnose	18 glycerol
9 sorbitol	19 ribose
10 galactose	20 ethanol

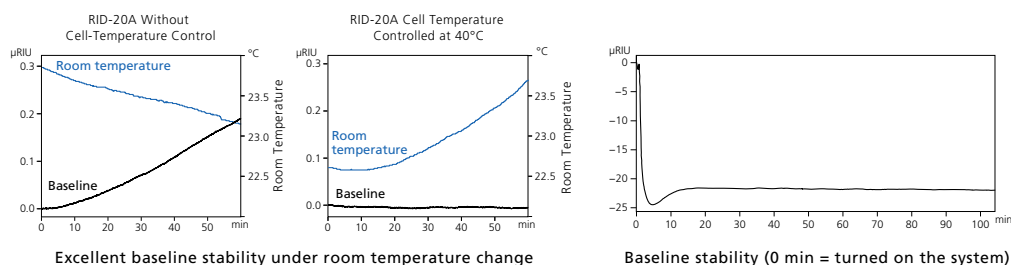
Shim-Pack SUR-Na Column Product Lineup

P/N	Description	Size	Remarks
228-95929-01	Shim-pack SUR-Na	250 mm x 7.8 mm I.D.	Analytical column
228-95929-02	Shim-pack SUR-Na (G)	50 mm x 7.8 mm I.D.	Guard column

Simple and Easy HPLC Setup

The Shim-pack SUR-Na column enables a simple HPLC configuration because the mobile phase is pure water. In addition, Shimadzu's refractive index detector, RID-20A, has a unique temperature control function to obtain a stable baseline eliminating the impact of room temperature fluctuation. The system can start the run earlier (*), leading to maximum analytical efficiency.

(*) compared to the previous model



Shim-pack is a trademark of Shimadzu Corporation or its affiliated companies in Japan and/or other countries.



Shimadzu Corporation
www.shimadzu.com/an/

For Research Use Only. Not for use in diagnostic procedures.

This publication may contain references to products that are not available in your country. Please contact us to check the availability of these products in your country.
 Company names, products/service names and logos used in this publication are trademarks and trade names of Shimadzu Corporation, its subsidiaries or its affiliates, whether or not they are used with trademark symbol "TM" or "®".
 Third-party trademarks and trade names may be used in this publication to refer to either the entities or their products/services, whether or not they are used with trademark symbol "TM" or "®".
 Shimadzu disclaims any proprietary interest in trademarks and trade names other than its own.

The contents of this publication are provided to you "as is" without warranty of any kind, and are subject to change without notice. Shimadzu does not assume any responsibility or liability for any damage, whether direct or indirect, relating to the use of this publication.