

Control Nexis GC-2030 and HS-20/HS-10 Using Chromeleon™ 7.2 Shimadzu GC Driver for Chromeleon™ 7.2

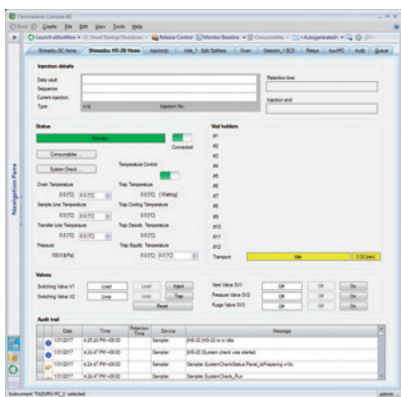
Control Shimadzu Nexis GC-2030 and HS-20/HS-10 Headspace sampler.

Now Thermo Scientific™ Chromeleon™ 7.2 Chromatography Data System (hereinafter called Chromeleon) Software can control the Nexis GC-2030 and HS-20/HS-10 Headspace sampler with the driver software. Shimadzu GC-2030 and HS-20/HS-10 instrument parameters can be set seamlessly via the Chromeleon 7.2.

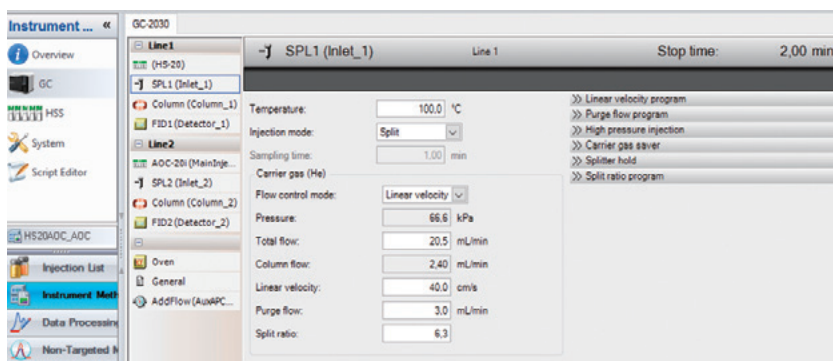
The ePanel shown in the Chromeleon provides functions for the direct control of Shimadzu GC-2030 and HS-20/HS-10. It is also equipped with monitoring functions to allow system operating status to be assessed at a glance as well as a system check function

for monitoring the usage of consumables by various instruments. After completing the sequence analysis, it is also possible to shutdown the Nexis GC-2030 automatically and safely by the shutdown function.

As a result, this software supports total from inspection before analysis to stop of equipment after analysis Also, Shimadzu instrument control parameters are set through the method editor embedded in the Chromeleon software. These parameters are stored and handled as standard Chromeleon method files.



ePanel



Instrument Method Editor

Maximize Productivity with Optimum Sample Injection

In addition to standard liquid analysis using an AOC-20i autoinjector, the following types of analysis are also supported.

- Simultaneous analysis of two lines using a dual injection system
- Successive switching between liquid and headspace analysis by installing both AOC-20i and HS-20 units

This optimal sample injection system helps maximize analytical productivity.



Using Instrument Methods for Smart Switching Between HS-20 and AOC Units

Product Lineup

Description	Versions with Functionality Verified
Shimadzu GC Driver for Chromeleon 7.2	Chromeleon 7.2 SR1 or later

Note: This product supports Nexis GC-2030 and HS-20/HS-10 system control and HS-20 standalone control.
GC-2010/GC-2010Plus/GC-2014 can be controlled using the Thermo Fisher Scientific Inc. driver provided with Chromeleon 7.2.

Controllable Hardware

The Shimadzu GC Driver for Chromeleon 7.2 supports control of the following units.

GC Unit Nexis GC-2030

Options AOC-20i (Plus) autoinjector, AOC-20s (Plus) autosampler, HS-20/HS-10 headspace sampler, dual injection system

Unit	Device name
Sample Injector	SPL-2030, WBI-2030, OCI-2030, PTV-2030
Detector	FID-2030, TCD-2030, ECD-2010 Exceed, FPD-2030, FTD-2030, BID-2030
Advanced Flow Technology	Backflush, detector splitting, detector switching, heart-cut system
Additional temperature controller	Auxiliary temperature control unit
Additional flow controller	APC (3 auxiliary channels), APC (1 auxiliary channel)
Options	Low-temperature control solenoid valve set: CRG-2030 External equipment control relay: PRG-2010 Plus, PRG Box

The following unit controls are included in Chromeleon Software.

The HS-20 head space sampler can be controlled by using the Shimadzu GC Driver for Chromeleon 7.2.

GC Unit GC-2010, GC-2010 Plus, GC-2014

Options HS-20 headspace sampler, AOC-20i autoinjector, AOC-20s autosampler

Unit	Device name
Sample injection port	GC-2010 (Plus) : SPL-2010 (Plus), OCI / PTV-2010 (Plus) GC-2014 : SPL-2014, DINJ-2014
Detector	GC-2010 (Plus) : FID-2010 (Plus), TCD-2010 (Plus), ECD-2010 (Plus), FPD-2010 (Plus), FTD-2010 (Plus) GC-2014 : DFID-2014, SFID-2014, TCD-2014, ECD-2014
Additional flow controller	GC-2010 (Plus) : APC (3 auxiliary channels)
Low-temperature oven controller	GC-2010 (Plus) : CRG-2010 low-temperature control solenoid valve unit

Note: * Up to four Shimadzu GC units can be controlled from a single instrument server.
* It is not recommended to connect other vendor instruments to the same instrument server.

Nexis is a trademark of Shimadzu Corporation.
Thermo Scientific and Chromeleon are trademarks of Thermo Fisher Scientific Inc.



For Research Use Only. Not for use in diagnostic procedures.

This publication may contain references to products that are not available in your country. Please contact us to check the availability of these products in your country.

Company names, products/service names and logos used in this publication are trademarks and trade names of Shimadzu Corporation, its subsidiaries or its affiliates, whether or not they are used with trademark symbol "TM" or "®".

Third-party trademarks and trade names may be used in this publication to refer to either the entities or their products/services, whether or not they are used with trademark symbol "TM" or "®".

Shimadzu disclaims any proprietary interest in trademarks and trade names other than its own.

The contents of this publication are provided to you "as is" without warranty of any kind, and are subject to change without notice. Shimadzu does not assume any responsibility or liability for any damage, whether direct or indirect, relating to the use of this publication.

Shimadzu Corporation

www.shimadzu.com/an/