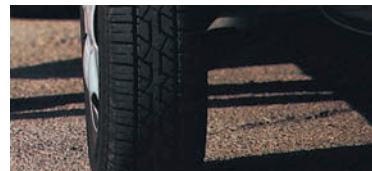


**GERSTEL**

## Pyrolysis Module PM 1

Enhances  
the GERSTEL  
ThermalDesorptionSystem  
TDS 3



Three good reasons why  
you should choose the  
GERSTEL Pyrolysis Module:

1 Higher temperature range

2 Cost-saving

3 Easy to use

▶ *Extends analytical capability of the  
TDS \$ for pyrolysis applications*

▶ *Thermal desorption,  
thermal extraction and pyrolysis  
in just one system*

▶ *No need to modify TDS \$*



## GERSTEL Pyrolysis Module PM 1



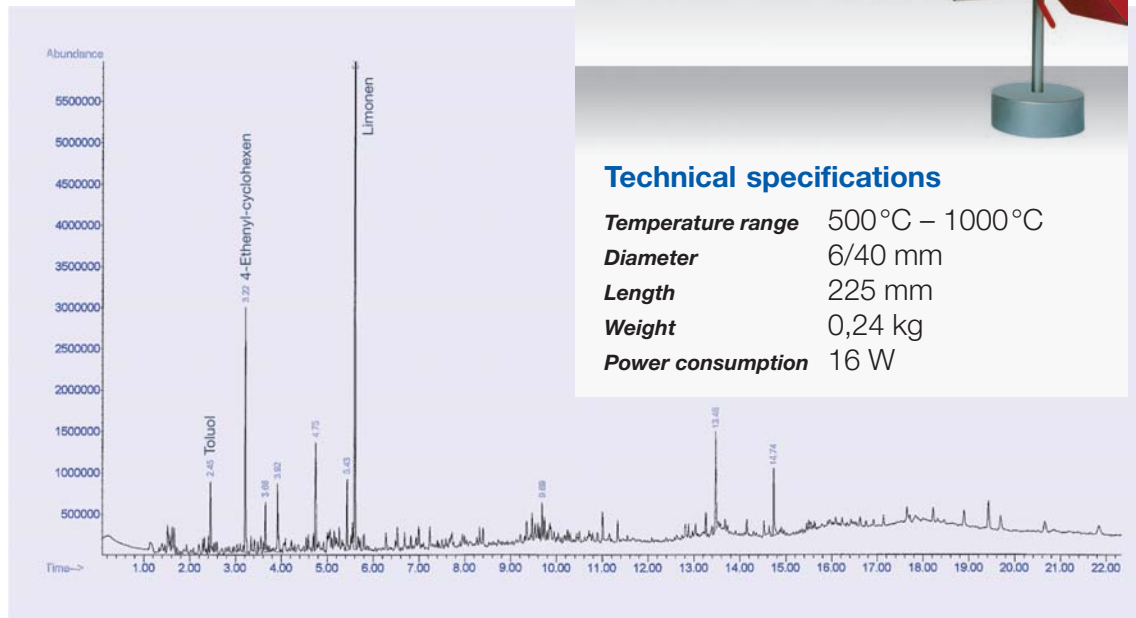
The PM 1 pyrolysis module is an accessory to the Gerstel TDS \$ that extends its capability so that thermal decomposition products can be determined. The PM 1 allows heating a sample beyond the normal thermal desorption temperature limit of 400°C to a final temperature between 500°C-1000°C. This allows the determination of thermal decomposition products of such samples as paint, polymers, adhesives, plastics and packaging materials. Some key areas where the PM1 can be used are in production quality control, product development and forensic science.

The PM 1 is very easy to use. The sample is placed in a glass capillary and inserted in the pyrolysis chamber at its tip. The module is then manually inserted into the TDS \$ in the same way as a standard TDS tube. As in standard thermal desorption, pyrolysis

products are transferred and refocused in the GERSTEL Cooled Injection System CIS, and then introduced as a narrow band onto the GC column for separation.

The PM 1 consists of the pyrolysis probe and a circuit board that is placed in the C505 controller of a TDS \$ system. The PM1 can also be used with a GERSTEL TDS A system after removal of the auto-sampler.

**Tire rubber**  
Chromatogram  
of sample  
Obtained with  
GERSTEL PM 1.



Information, descriptions and specifications in this publication are subject to change without notice. GERSTEL, GRAPHACK and TWISTER are registered trademarks of GERSTEL GmbH & Co. KG.

© Copyright by GERSTEL GmbH & Co. KG

