

EU compliant routine quantitative dioxin, dioxin-like PCB and marker PCB analysis by GC-MS/MS using an advanced electron ionization source

Richard Law¹, Alexander Schaechtele², Amit Gujar³, Jiangtao Xing⁴, Cristian Cojocariu¹

¹Thermo Fisher Scientific, Runcorn, UK, ²European Union Reference Laboratory (EURL) for Halogenated POPs in Feed and Food, Freiburg, Germany, ³Thermo Fisher Scientific, Austin, Texas, ⁴Thermo Fisher Scientific, Beijing, China

ABSTRACT

In this study, the performance of a triple quadrupole GC-MS/MS system equipped with an advanced electron ionization (AEI) source was evaluated. Data was acquired on two different Thermo Scientific™ TSQ™ 9000 triple quadrupole GC-MS/MS systems with the Advanced Electron Ionization (AEI) source located in two different laboratories and operated by different chemists (UK and USA). Commercially available solvent standards, food/ feedstuff, and proficiency test (PT) samples were used to evaluate the performance of each system for the analysis of polychlorinated dibenzo-p-dioxins (PCDDs), polychlorinated dibenzo-p-furans (PCDFs), dioxin-like polychlorinated biphenyls (PCBs), and non-dioxin-like (indicator) PCBs. Guidance from the European Union Reference Laboratories (EURL) on the use of a calibration approach was followed to set suitable LOQs essentially, to demonstrate sufficient sensitivity to enable reporting at 1/5th of the maximum level (ML) upper bound sum toxic equivalences (TEQs).

INTRODUCTION

Developments in gas chromatography-triple quadrupole mass spectrometry (GC-MS/MS) technologies have allowed their use for confirmatory analysis and control of maximum levels (MLs) and action levels (ALs) of polychlorinated dibenzo-p-dioxins (PCDDs), polychlorinated dibenzo-p-furans (PCDFs), and dioxin-like polychlorinated biphenyls (dl-PCBs) in certain food and feed samples, according to current EU regulations 644/2017 and 771/2017. Since the regulatory changes in Europe in 2014, sensitivity has often been the primary focus when demonstrating GC-MS/MS performance for confident, and regulatory compliant, confirmation of the presence of dioxins and dioxin-like compounds.

MATERIALS AND METHODS

Sample Preparation

Food and feedstuff samples (including PT samples) were provided by the EURL for Halogenated POPs in Feed and Food, Freiburg, Germany. A nominal sample intake weight of 2 grams (fat) was used for the samples unless indicated otherwise. Extraction (where required) was performed by Twisselmann hot extraction (comparable with Soxhlet extraction) or pressurized liquid extraction. Automated cleanup of extracts was performed using a three column (multi-layered acidic silica, alumina, and carbon columns) setup on the DEXTech™ Plus system (LCTech GmbH). Two extract fractions were provided per sample, the first containing the non-ortho PCBs and PCDD/Fs (final volume 20 µL nonane) and the second containing the mono-ortho and di-ortho PCBs and indicator PCBs (final volume 100 µL nonane).

Test Method(s)

European method EN:1948 standard solutions; EN-1948CVS, WM48-CVS (calibration and quantitation), EN-1948ES, EN-1948IS, P48-W-ES, P48-M-ES, and P48-RS (extraction) were utilized for the extraction, calibration, and quantitation of PCDD/Fs, dioxin-like PCBs, and indicator PCBs. All standards were obtained from Wellington Laboratories Inc., Canada.

Data Analysis

Data were acquired using timed-SRM mode, processed and reported using Thermo Scientific™ Chromeleon™ Chromatography Data System (CDS) software, version 7.2, which allows instrument control, quantitative/qualitative analysis, and customizability.

RESULTS

Chromatography

The proprietary phase of the TG-Dioxin capillary GC column (P/N: 26066-1540) provided excellent separation of PCDD/F and PCB congeners, particularly the tetra (Figure 2) and penta-substituted PCDD/Fs. All chromatographic criteria stated in regulation were met using the TG-Dioxin column in this study.^{1,2,3}

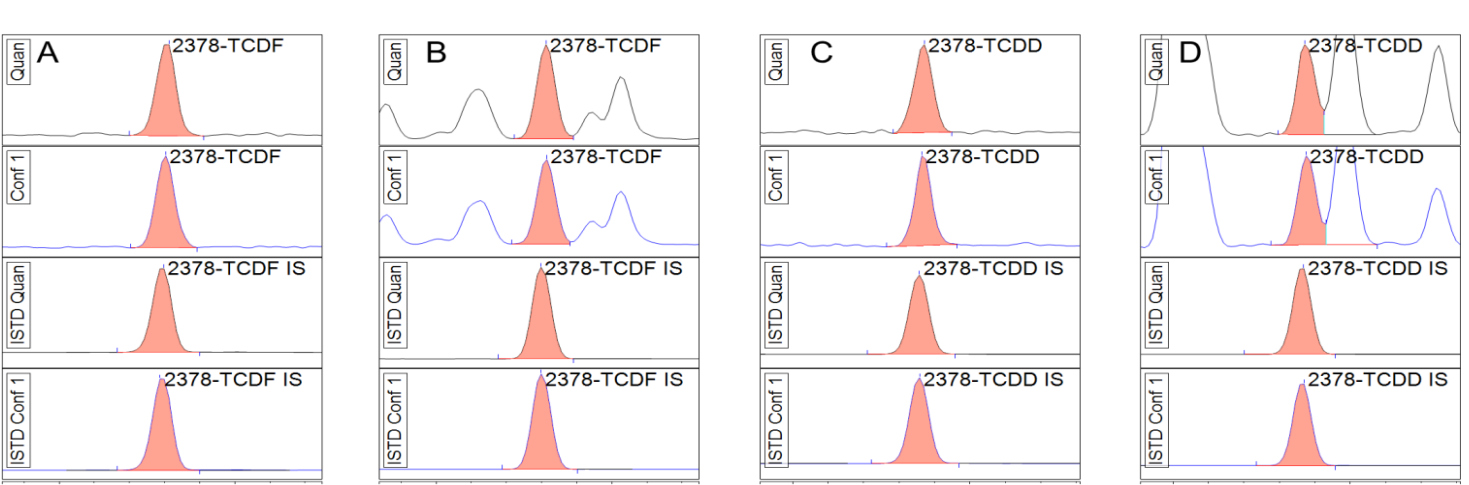


Figure 2. TeCDD/F congener separation in solvent standard and palm fatty acid distillate (PFAD) PT sample. Associated ¹³C-labelled congeners are displayed below. A - 20fg on-column 2,3,7,8-TCDF; solvent standard, B - ~180fg on-column 2,3,7,8-TCDF; PFAD sample, C - 20fg on-column 2,3,7,8-TCDD; solvent standard and D - ~55fg on-column 2,3,7,8-TCDD; PFAD sample. All quantification and confirmation ions are labelled.

Determination of Limits of Quantitation (LOQs)

As previously described (AN-10590), calculation of LOQs based on signal to noise ratios obtained using GC-MS/MS systems is unreliable, hence, it is more appropriate to use a calibration-based approach.^{3,4} Employing calibration standards at the LOQ, and subsequent check standards at this level, allows the user to demonstrate continual method performance throughout the analytical sequence (Figures 3, 4 & 5). It also allows for a simple calculation to determine the LOQ which will be achieved for PCDD/Fs using a fixed sample weight:

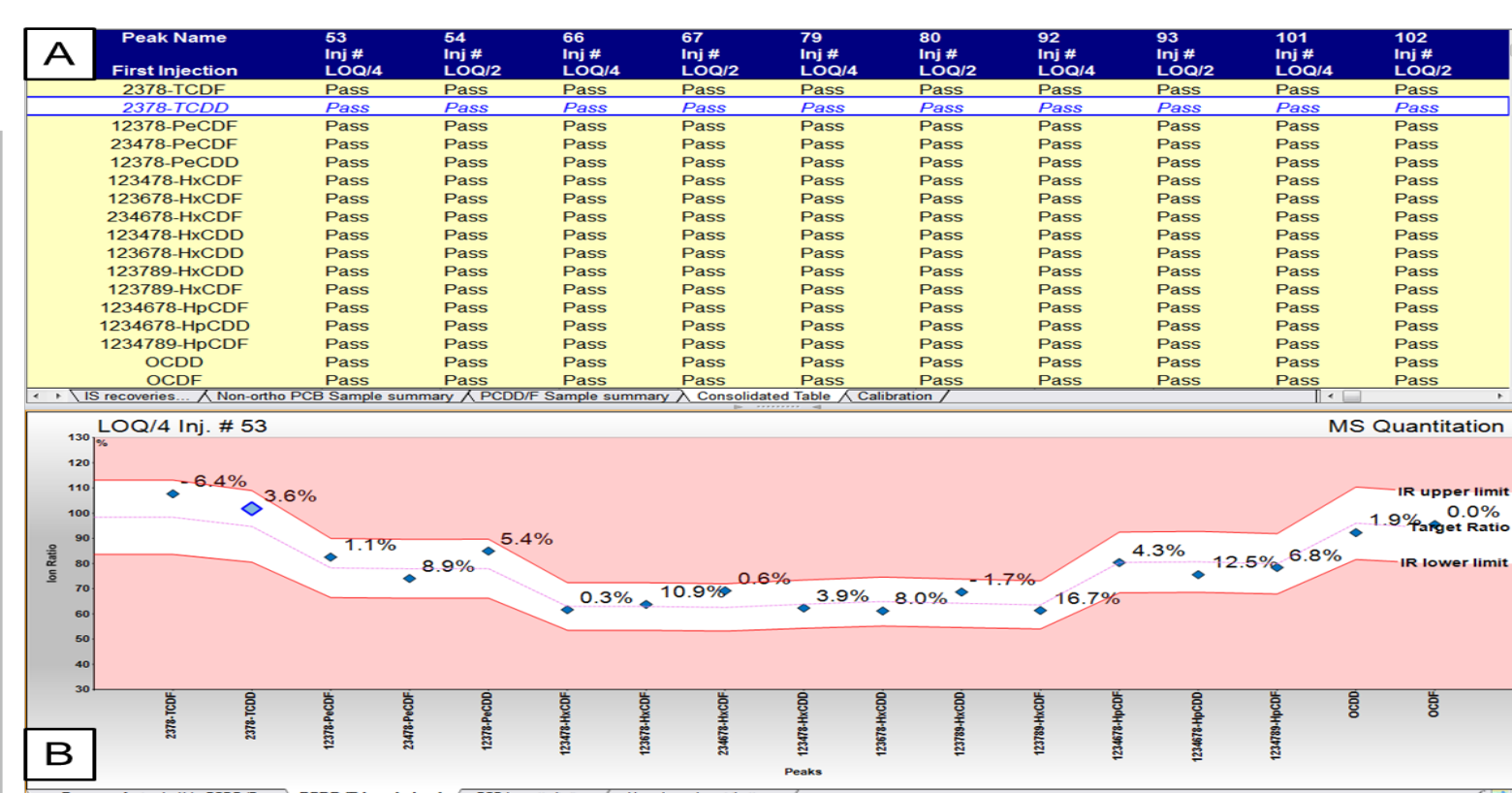


Figure 3. Chromeleon results browser showing: A - Real-time updated Pass/Fail statements for each check standard, and B - IR and RF deviation visual display to easily check if the IR is out of the allowable range ($\pm 15\%$) and if the congener has an RF within acceptable deviation ($< 30\%$).

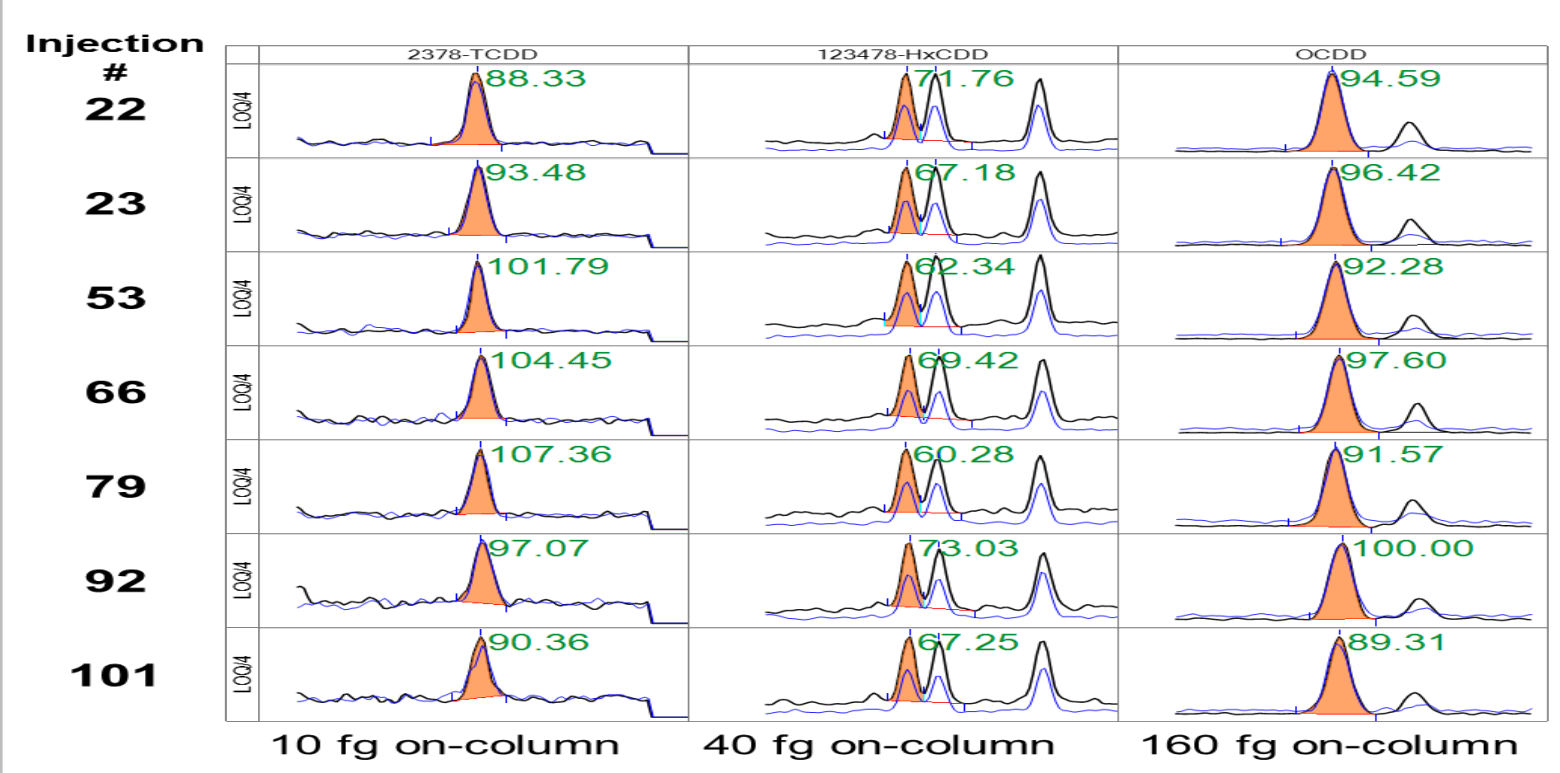


Figure 4. LOQ repeatability during the UK based PCDD/F and non-ortho PCB sequence. Overlaid extracted ion chromatograms (XICs) are displayed (quantification and confirmation ions) for selected TCDD, HxCDD and OCDD congeners, all IRs (as displayed in green) and RFs were within the allowable tolerances (IR $\pm 15\%$ from theoretical or average value; RF $< 30\%$ deviation from average value) as defined by EURL guidance⁴ throughout the sequence.

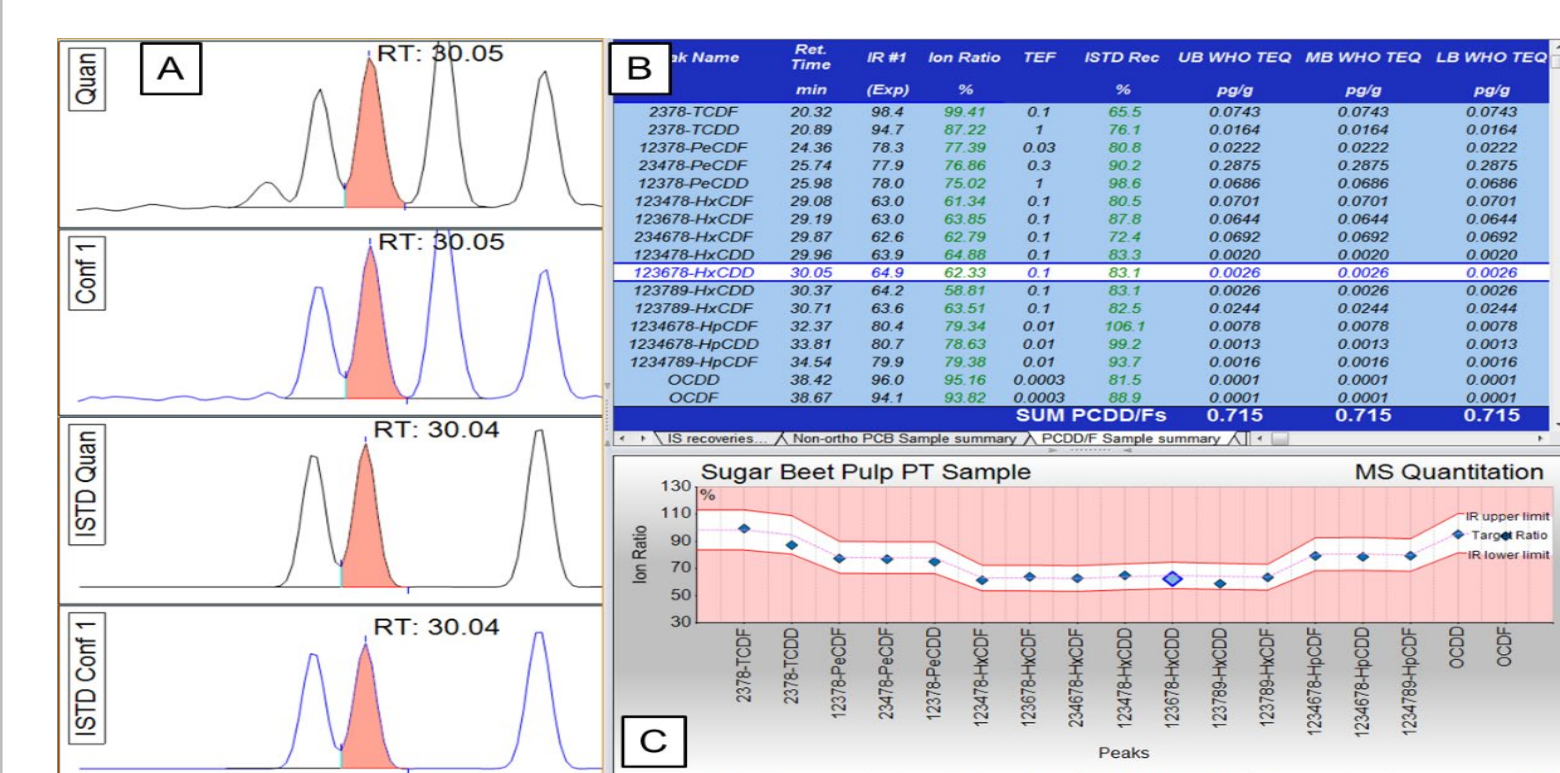


Figure 5. Chromeleon results browser showing A - native quantification and confirmation peaks with associated ¹³C-labelled quantification and confirmation peaks, B - interactive sample results browser showing upper, middle and lowerbound, WHO-PCDD/F-TEQ values, flagged IRs and ¹³C-labelled congener recovery, C - IRs and LOQs visual display to check if the ion ratio is within the allowable tolerance and if the peak amount is below the LOQ. Similar displays are available for PCBs. Sugar beet pulp PT sample shown; WHO-PCDD/F-TEQ 0.72 pg/g.

Quantification and confirmation of PCDD/Fs, dioxin-like PCBs and indicator PCBs in food and feed samples
A total 29 different samples were analyzed (39 separate sample extractions, with two fractions for each over two sites, on two separate TSQ 9000 AEI GC-MS/MS systems for non-ortho PCBs & PCDD/Fs and di-, mono-ortho PCBs & indicator PCBs). To demonstrate the efficacy of the TSQ 9000 AEI GC-MS/MS systems, 6 replicate extractions of a mixed fat quality control sample (QK1 - reference value: 0.87 pg sum WHO-PCDD/F-TEQ) were prepared, these were split between the sites and analyzed at regular intervals throughout the analytical sequences (14 injections in total over the two non-ortho PCBs & PCDD/Fs sequences). An example of the chromatography achieved for a selection of congeners in the non-ortho PCBs & PCDD/Fs fraction is shown in Figure 6.

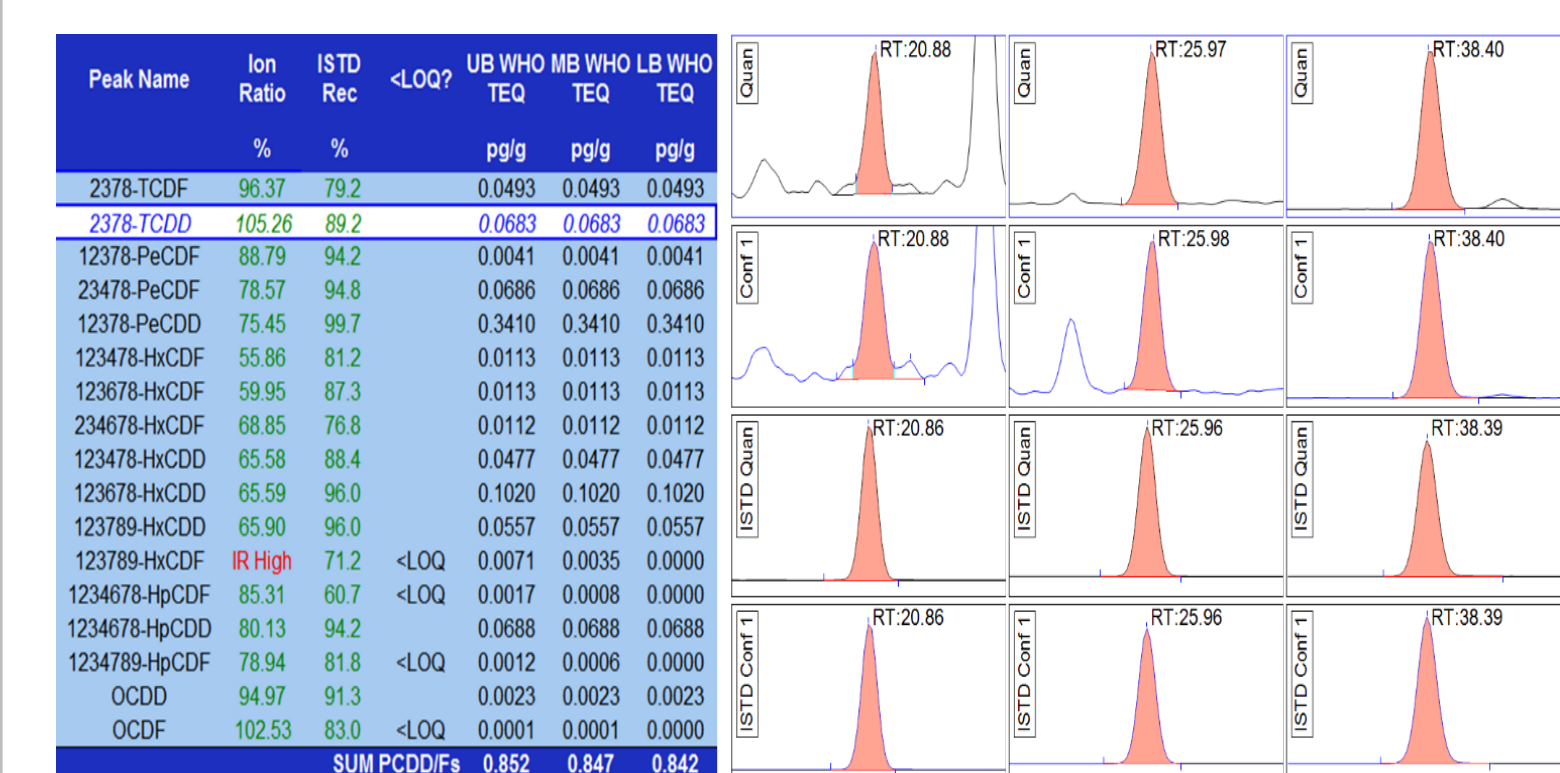


Figure 6. QK1 mixed fat quality control sample example chromatogram where, A - 2,3,7,8-TCDD [0.03 pg on-column], B - 1,2,3,7,8-PeCDD [0.14 pg on-column] and C - OCDD [3.1 pg on-column]. The Chromeleon interactive results pane (left) displays IRs and internal standard recoveries, as well as real-time updated WHO-PCDD/F-TEQ (pg/g) values.

The measured WHO-PCDD/F-TEQ (pg/g) value for each congener was in excellent agreement with the reference value provided by the EURL (Figure 7), with the upperbound WHO-PCDD/F-TEQ (pg/g) not deviating by more than 6% from the reference value over all 14 measurements. Furthermore, the deviation between the upperbound and lowerbound WHO-PCDD/F-TEQ (pg/g) for each measurement was consistently less than 1.2%, well below the maximum 20% deviation required for samples which exceed the ML as specified in EU regulation (Figure 7).⁵

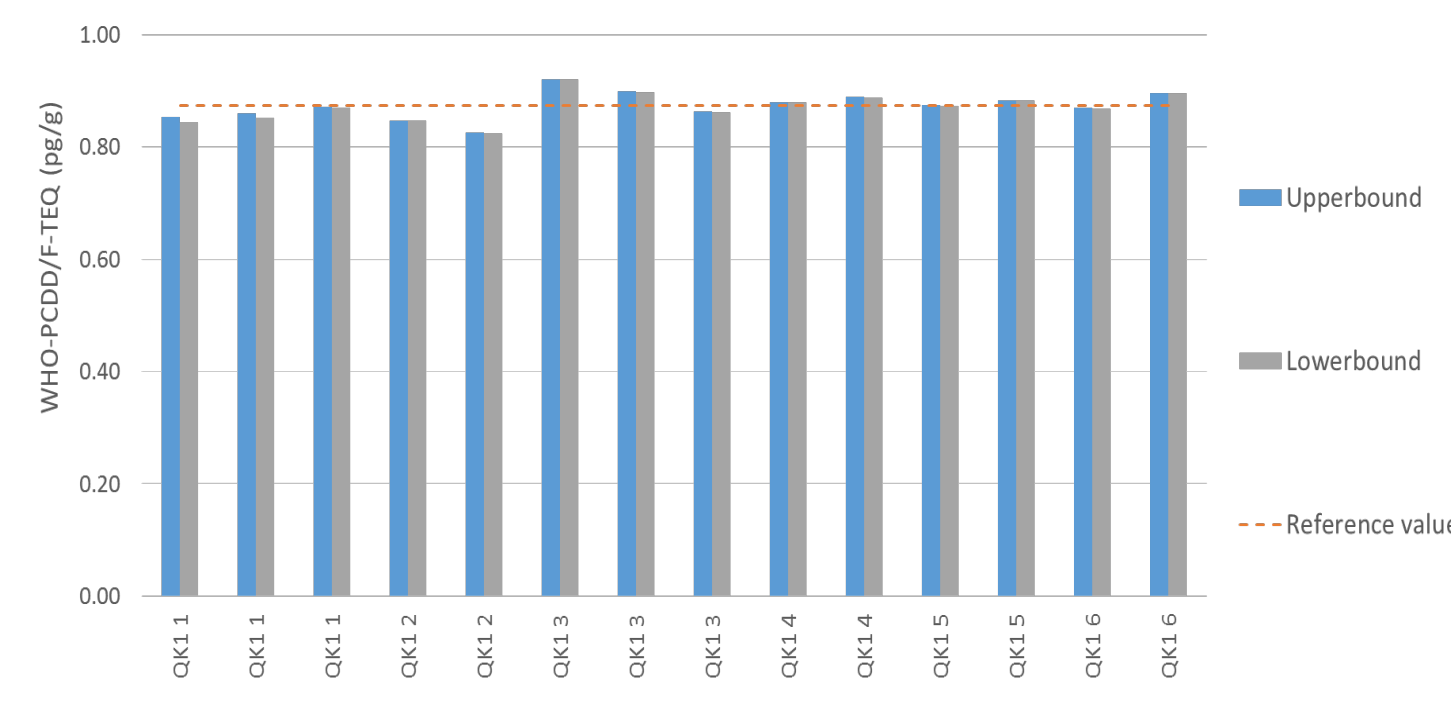


Figure 7. Upperbound and lowerbound WHO-PCDD/F-TEQ (pg/g) results for all 14 measurements of the QK1 mixed animal fat quality control sample (six replicate extractions).

To provide further validation data, an additional certified reference material (CRM) was extracted and analyzed on a PTV TSQ 9000 AEI system in Beijing, China. One gram of CRM WMF-01 (Wellington Laboratories Inc., Canada) was extracted and analyzed in triplicate (modified oven ramp, 5µL PTV injection). The results obtained were in excellent agreement with the reference values published, with all congeners within the specified tolerance (Figure 8). The calculated SUM WHO-PCDD/F-TEQ (pg/g) for the measurements versus the calculated reference SUM WHO-PCDD/F-TEQ (pg/g) is also displayed in figure.

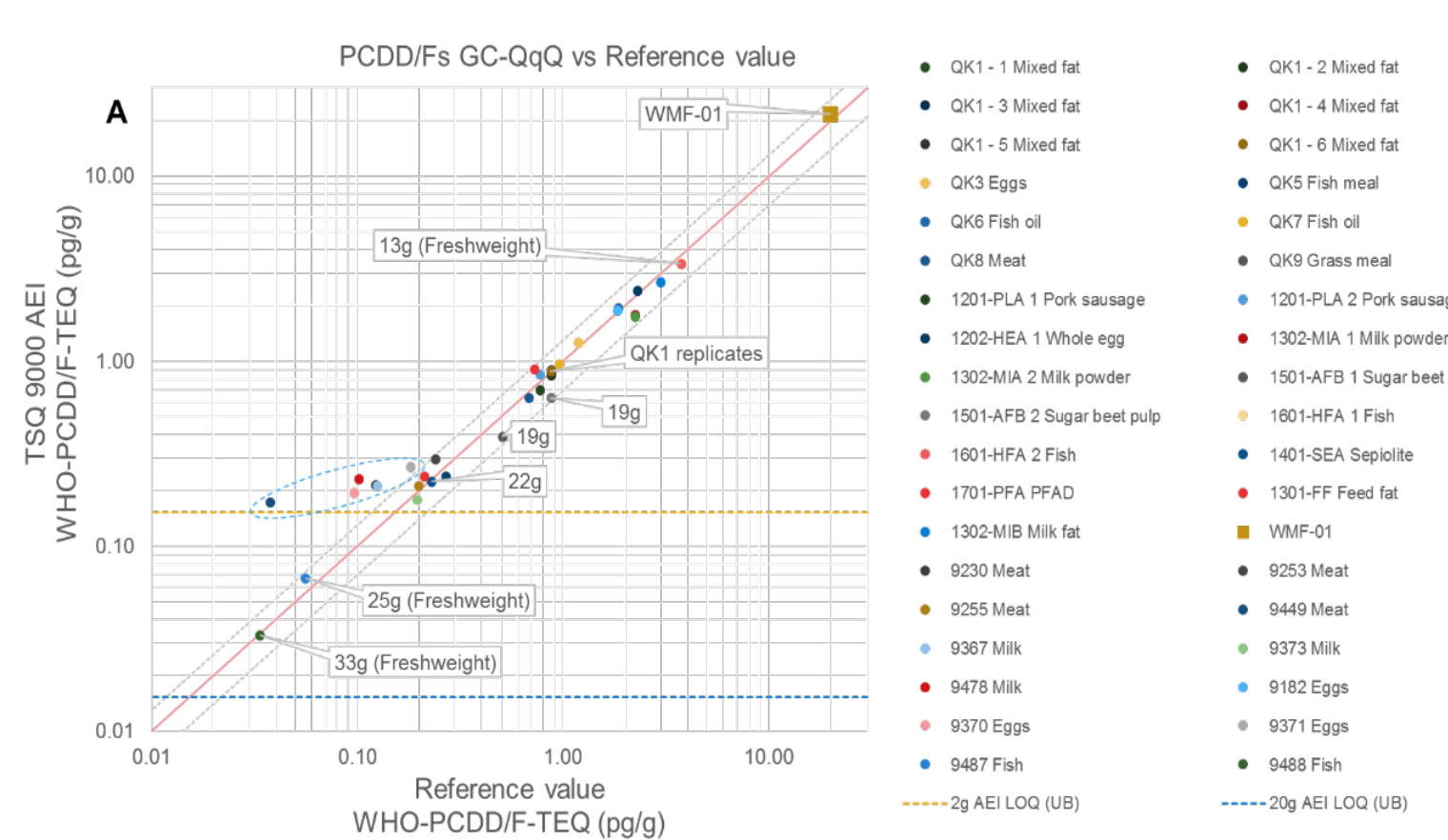


Figure 8. Comparison of data (PCDD/Fs) obtained on the GC-MS/MS with the EURL reference values. The center red line represents 100% agreement with the value and the upper and lower grey lines represent a $\pm 30\%$ deviation from this value. Unless specified, sample intake weight was 2g, amount scales are logarithmic to aid comparison.

To provide further validation data, an additional certified reference material (CRM) was extracted and analyzed on a PTV TSQ 9000 AEI system in Beijing, China. One gram of CRM WMF-01 (Wellington Laboratories Inc., Canada) was extracted and analyzed in triplicate (modified oven ramp, 5µL PTV injection). The results obtained were in excellent agreement with the reference values published, with all congeners within the specified tolerance (Figure 8). The calculated SUM WHO-PCDD/F-TEQ (pg/g) for the measurements versus the calculated reference SUM WHO-PCDD/F-TEQ (pg/g) is also displayed in figure.

Robustness

To further assess the robustness of the analytical system, the remaining extracts from the non-ortho PCBs and PCDD/Fs samples were pooled together into mixed matrix extract. This pooled matrix sample was then analyzed alongside nonane blank and LOQ standard injections. The injection sequence was set up as follows: four injections (LOQ, blank, pooled matrix, blank) were followed by a four-hour hold at the initial oven temperature and repeated, resulting in a total of 161 injection sequence containing $n = 40$ matrix injections and $n = 40$ LOQ standards, run over ~2 weeks period. The system maintained sensitivity throughout delivering excellent robustness, even considering the high matrix complexity and load on column (Figures 9A and B). No maintenance (such as source cleaning, liner replacement, tuning, or analytical column trimming) was performed during the sequence.

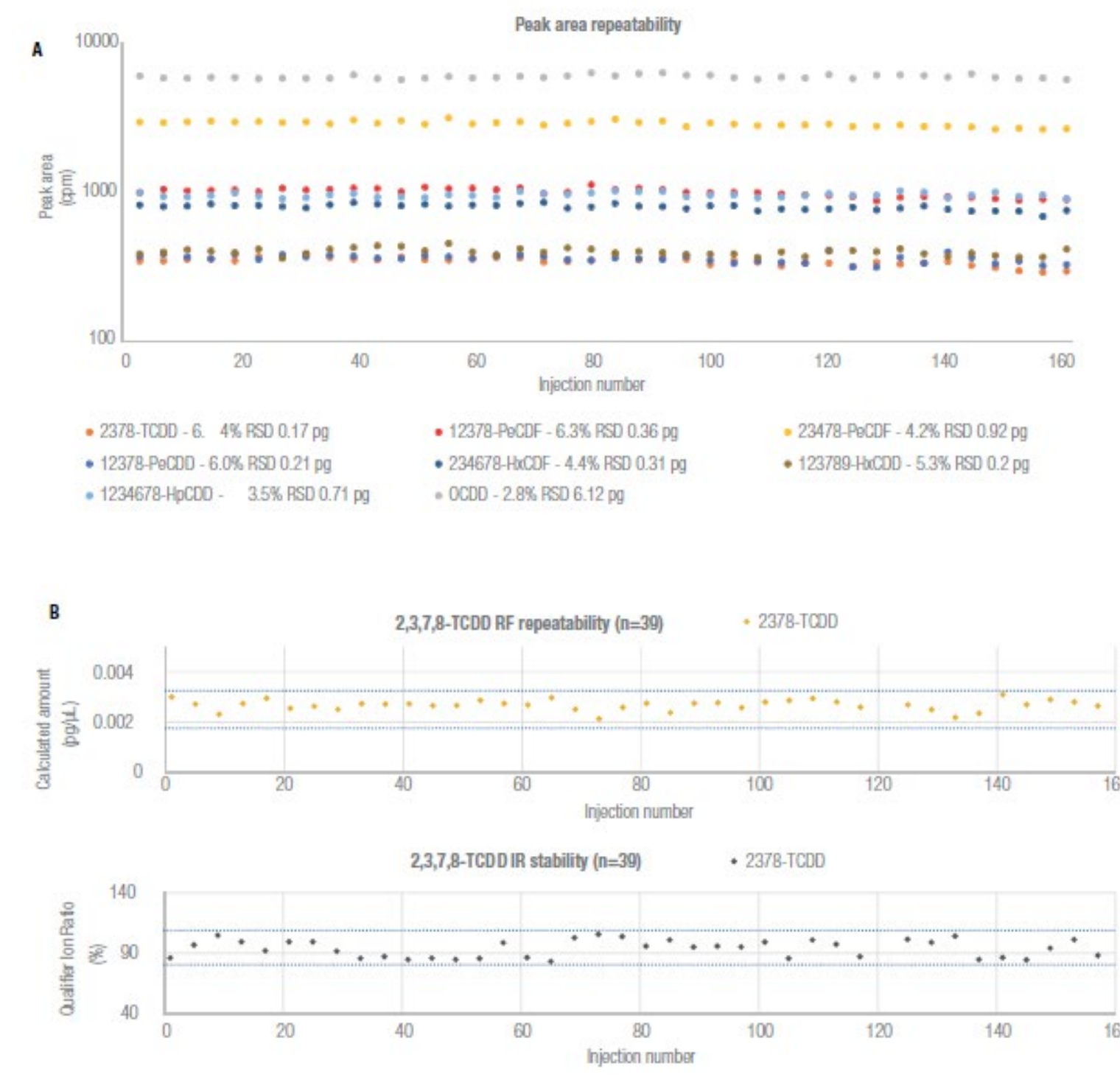


Figure 9. (A) Absolute peak area repeatability over two weeks of analysis, for selected PCDD/F congeners in pooled matrix sample. Relative standard deviations and amounts on-column (pg) are annotated for each selected congener, (B) LOQ RF deviation (upper plot, calculated as deviation from target amount) and IR (lower plot) for the 10 fg on-column 2,3,7,8-TCDD congener (2.5 fg/µL, 4 µL injection).

CONCLUSIONS

The results of these comprehensive experiments demonstrate that the TSQ 9000 GC-MS/MS system, configured with the AEI source and controlled using Chromeleon CDS software, can deliver routine-grade performance for the quantification and confirmation of PCDD/Fs, dioxin-like PCBs, and indicator PCBs in food and feedstuffs.

- Successful validation of method performance criteria (LOQ, precision, accuracy, and calibration) was carried out on two separate TSQ 9000 AEI systems, in two geolocations.
- The sensitivity achieved with the TSQ 9000 AEI system allowed for upper-bound WHO-PCDD/F-TEQ (pg/g) values as low as 0.15 (for a 2 g sample intake weight), meeting the 1/5th maximum level requirements for all but the most challenging matrices.
- The outstanding linear range and accurate quantitative performance generated excellent comparative data to the EURL reference data supplied, with calibration data showing RF %RSD of < 6 over more than 4 orders of magnitude for many congeners.
- Minimizing user intervention has been demonstrated by running over two weeks with no maintenance (such as source cleaning, liner replacement, tuning, or analytical column trimming), allowing maximum uptime and sample throughput.
- Chromeleon CDS software, version 7.2, provides an integrated platform, with the ability to automatically setup, easily acquire, process and report compliant data in a fully regulated environment, eliminating the need for using external spreadsheet programs. Chromeleon eWorkflows, available from Thermo Scientific™ AppsLab Library of Analytical Applications, also provide error-free execution of each analysis to meet standard operating procedure (SOP) requirements, further simplifying the user experience

REFERENCES

1. European Commission, Commission Regulation (EU) 2017/644, Off. J. Eur. Union, L 92-34, 2017.
2. European Commission, Commission Regulation (EU) 2017/771, Off. J. Eur. Union, L 115-22-42, 2017.
3. Low level quantification of PCDD/Fs in animal feed using the TSQ 9000 triple quadrupole GC-MS/MS system with AEI source. <https://www.thermofisher.com/uk/en/home/global/forms/industrial/low-level-quantification-pcdd-fs-animal-feed-tsq-9000-tq-gcms-ms.html> (assessed Jan 28, 2019)
4. Guidance Document on the Estimation of LOD and LOQ for Measurements in the Field of Contaminants in Feed and Food. <https://ec.europa.eu/jrc/en/publication/guidance-document-estimation-lod-and-loq-measurements-field-contaminants-feed-and-food>
5. Directive 2002/32/EC of the European Parliament and of the Council of 7 May 2002 on undesirable substances in animal feed, Off. J. Eur. Communities, L 140-21-21, 2002, in current amendment <http://data.europa.eu/eli/dir/2002/32/2015-02-27> (assessed Jan 28, 2019)

ACKNOWLEDGEMENTS

Thermo Fisher Scientific would like to acknowledge Wellington Laboratories Inc., Canada for the production and supply of the LOQ standards used in this validation, the European Union Reference Laboratory (EURL) for Halogenated POPs in Feed and Food (Freiburg, Germany) for the collaboration with the analysis presented in this poster.

TRADEMARKS/LICENSING

© 2019 Thermo Fisher Scientific Inc. All rights reserved. DEXTech is a trademark of LCTech GmbH. Wellington is trademark of Wellington Laboratories Inc. All other trademarks are the property of Thermo Fisher Scientific and its subsidiaries. This information is not intended to encourage use of these products in any manner that might infringe the intellectual property rights of others.

PO30632

ThermoFisher
SCIENTIFIC