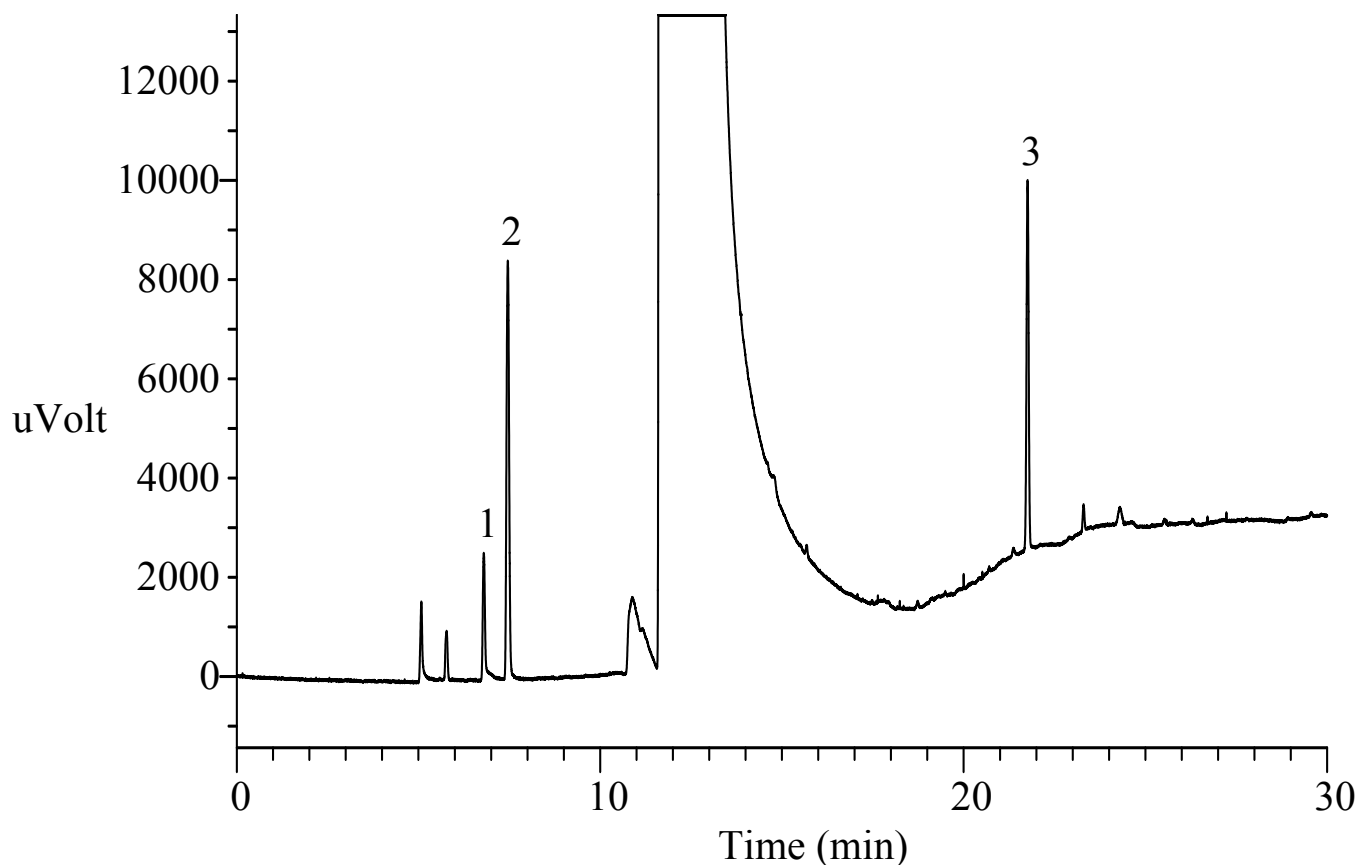


InertSearch™ for GC

InertCap® Applications

Ethylene oxide in Ethanol

Data No. GA147-0591



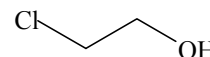
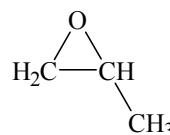
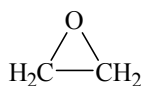
Conditions

System : GC/FID Headspace Gas(HT3)
Column : InertCap WAX
0.25 mm I.D. x 60 m df = 0.50 µm
Col. Cat. No. : 1010-67164
Col. Temp. : 40 °C (5 min hold) - 10 °C/min
- 200 °C (9 min hold)
Carrier Gas : He 150 kPa
Injection : Split flow 11 mL/min
150 °C
Detection : FID Range 10⁰
220 °C
Sample Size : Headspace Gas 0.5 mL
70 °C 30 min

Analyte

1. Ethylene oxide 1 mg/L
2. Propylene oxide 5 mg/L
3. 2-Chloroethanol 50 mg/L

Chemical Structure



1. Ethylene oxide 2. Propylene oxide 3. 2-Chloroethanol

Structures are created using Chemistry 4-D Draw which is provided by ChemInnovation Software, Inc.

Analytes were dissolved in Ethanol and then 10 mL of Ethanol solution was introduced into a 22 mL vial