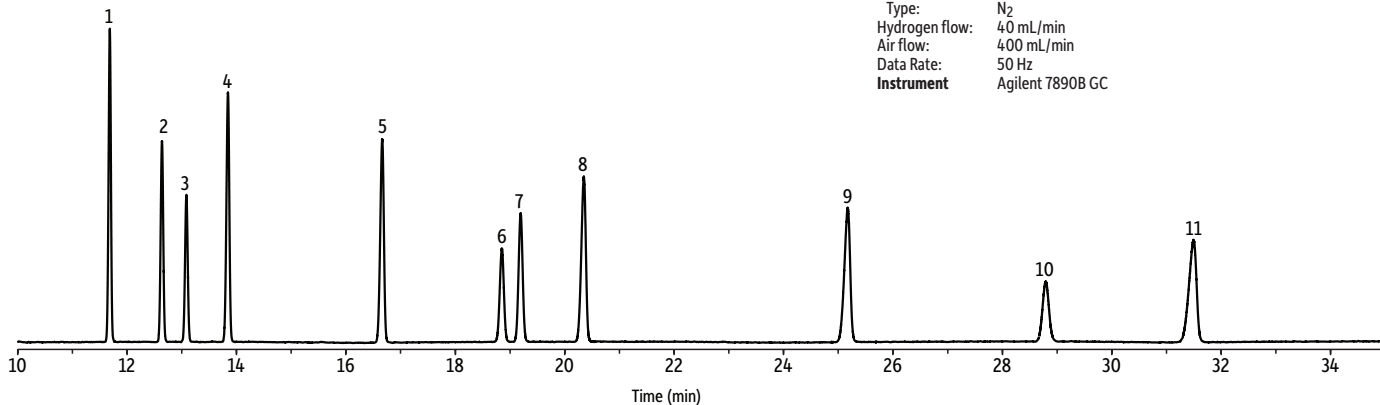


# Unsaturated FAMES QC Test Mix on Rt-2560

Peaks	t <sub>R</sub> (min)	Conc. (mg/mL)	Structural Nomenclature
1. Methyl octadecanoate	11.68	1.1	C18:0
2. Methyl elaidate	12.64	0.8	C18:1 (t9)
3. Methyl oleate	13.09	0.6	C18:1 (c9)
4. Methyl nonadecanoate	13.84	1.1	C19:0
5. Methyl eicosanoate	16.66	1.1	C20:0
6. Methyl eicosenoate	18.85	0.6	C20:1 (c11)
7. Methyl linolenate	19.20	0.8	C18:3 (c9,c12,c15)
8. Methyl heneicosanoate	20.35	1.1	C21:0
9. Methyl docosanoate	25.17	1.1	C22:0
10. Methyl eicosatrienoate	28.79	0.6	C20:3 (c11,c14,c17)
11. Methyl tricosanoate	31.49	1.1	C23:0

**Column** Rt-2560, 100 m, 0.25 mm ID, 0.20 µm (cat.# 13198)  
**Sample** Unsaturated FAMES QC test mix  
**Diluent:** Hexane  
**Injection**  
 Inj. Vol.: 1 µL split (split ratio 200:1)  
 Liner: Premium 4 mm Precision liner w/wool (cat.# 23305.1)  
 Inj. Temp.: 250 °C  
**Oven**  
 Oven Temp.: 180 °C (hold 40 min)  
**Carrier Gas** H<sub>2</sub>, constant flow  
 Flow Rate: 2.5 mL/min  
**Detector** FID @ 275 °C  
 Make-up Gas  
 Flow Rate: 50 mL/min  
 Make-up Gas  
 Type: N<sub>2</sub>  
 Hydrogen flow: 40 mL/min  
 Air flow: 400 mL/min  
 Data Rate: 50 Hz  
**Instrument** Agilent 7890B GC



GC\_QA0099