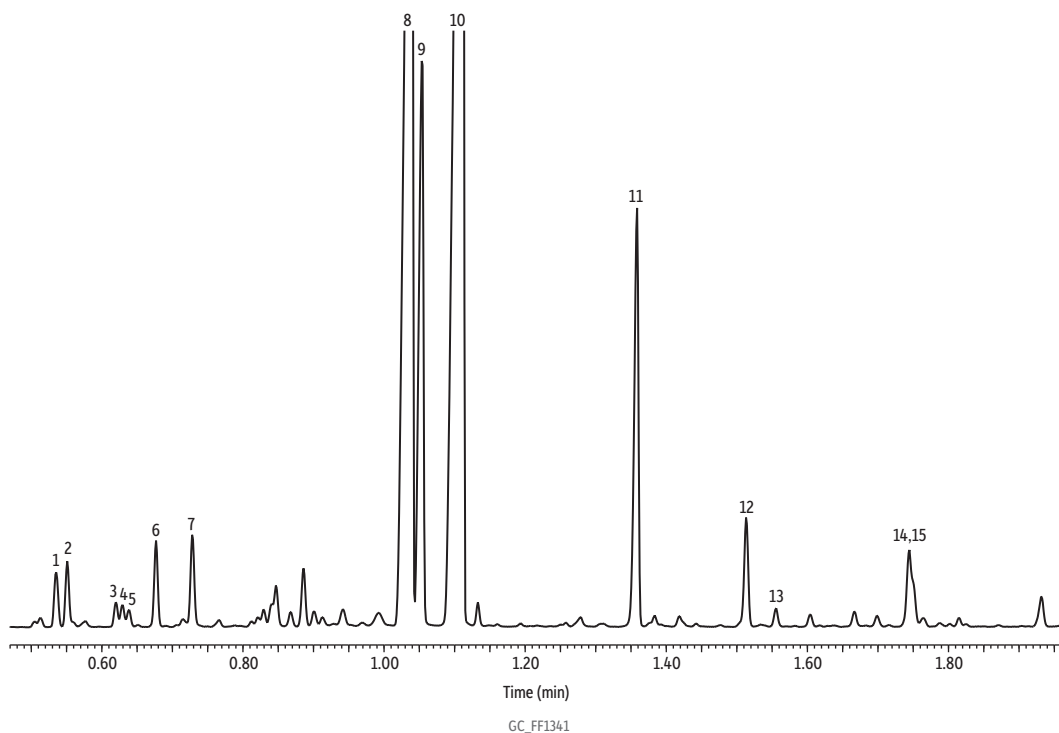


Lemongrass Oil on Rxi-5Sil MS (10 m, 0.15 mm ID, 0.15 µm)



Peaks	tr (min)	Peaks	tr (min)
1. Camphene	0.536	8. Z-Citral	1.038
2. 5-Hepten-2-one, 6-methyl-	0.551	9. Geraniol	1.053
3. β-Ocimene	0.620	10. E-Citral	1.111
4. D-Limonene	0.629	11. Geranyl acetate	1.358
5. α-Ocimene	0.639	12. Caryophyllene	1.514
6. 4-Nonanone	0.677	13. α-Caryophyllene	1.556
7. Linalool	0.729	14. α-Amorphene	1.744
		15. δ-Cadinene	1.751

Column Rxi-5Sil MS, 10 m, 0.15 mm ID, 0.15 µm (cat.# 43815)
Sample Lemongrass oil
Diluent: Acetone
Conc.: 1%
Injection
Inj. Vol.: 1 µL split (split ratio 100:1)
Liner: Topaz 4.0 mm ID Precision inlet liner w/wool (cat.# 23305)
Inj. Temp.: 250 °C
Oven
Oven Temp.: 100 °C to 300 °C at 45 °C/min to 320 °C at 30 °C/min (hold 5 min)
Carrier Gas He, constant flow
Flow Rate: 1.01 mL/min
Detector MS
Mode: Scan
Scan Program:

Group	Start Time (min)	Scan Range (amu)	Scan Rate (scans/sec)
1	1.00	35-500	11

Transfer Line Temp.: 300 °C
Analyzer Type: Quadrupole
Source Type: Inert
Source Temp.: 230 °C
Quad Temp.: 150 °C
Instrument Agilent 7890A GC & 5975C MSD
Notes All peaks were identified using the NIST MS EI spectra library (2005).