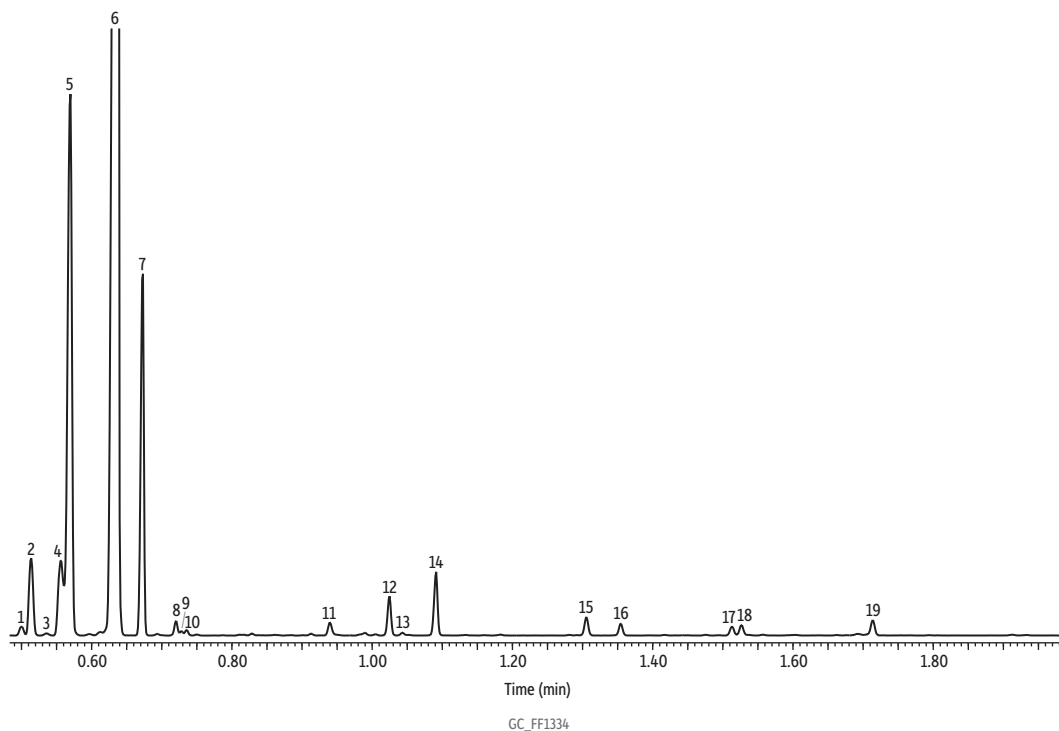


Lemon Oil on Rxi-5Sil MS (10 m, 0.15 mm ID, 0.15 µm)



Peaks	tr (min)	Peaks	tr (min)
1. α-Thujene	0.501	10. Nonanal	0.735
2. α-Pinene	0.514	11. α-Terpineol	0.940
3. Camphene	0.536	12. Z-Citral	1.025
4. β-Myrcene	0.557	13. Geraniol	1.043
5. β-Pinene	0.570	14. E-Citral	1.091
6. D-Limonene	0.637	15. Neryl acetate	1.305
7. γ-Terpinene	0.673	16. Geranyl acetate	1.354
8. Terpinolene	0.720	17. β-Caryophyllene	1.513
9. Linalool	0.728	18. α-Bergamotene	1.527
		19. β-Bisabolene	1.714

Column Rxi-5Sil MS, 10 m, 0.15 mm ID, 0.15 µm (cat.# 43815)
Sample Lemon oil
Diluent: Acetone
Conc.: 1%
Injection
 Inj. Vol.: 1 µL split (split ratio 100:1)
 Liner: Topaz 4.0 mm ID Precision inlet liner w/wool (cat.# 23305)
 Inj. Temp.: 250 °C
Oven
 Oven Temp.: 100 °C to 300 °C at 45 °C/min to 320 °C at 30 °C/min (hold 5 min)
Carrier Gas He, constant flow
 Flow Rate: 1.01 mL/min
Detector MS
 Mode: Scan
 Scan Program:

Group	Start Time (min)	Scan Range (amu)	Scan Rate (scans/sec)
1	1.00	35-500	11

Transfer Line Temp.: 300 °C
 Analyzer Type: Quadrupole
 Source Type: Inert
 Source Temp.: 230 °C
 Quad Temp.: 150 °C
Instrument Agilent 7890A GC & 5975C MSD
Notes All peaks were identified using the NIST MS EI spectra library (2005).