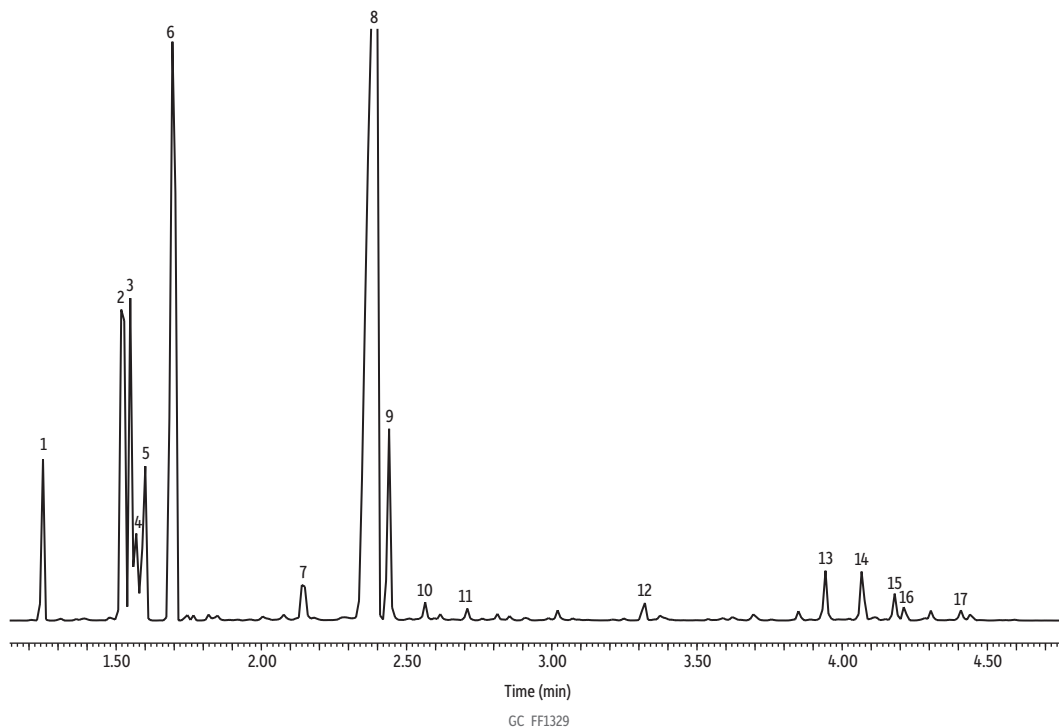


Tea Tree Oil on Rxi-5Sil MS (20 m, 0.18 mm ID, 0.18 μm)



Peaks	ts (min)	Peaks	ts (min)
1. α-Pinene	1.253	9. α-Terpineol	2.445
2. Terpinolene	1.522	10. Nerol	2.568
3. p-Cymene	1.549	11. Geraniol	2.714
4. D-Limonene	1.569	12. γ-Elemene	3.324
5. Eucalyptol	1.599	13. Caryophyllene	3.947
6. γ-Terpinene	1.700	14. Aromadendrene	4.072
7. Pinocarveol	2.149	15. α-Caryophyllene	4.181
8. Terpinen-4-ol	2.394	16. Alloaromadendrene	4.212
		17. Ledene	4.414

**Column** Rxi-5Sil MS, 20 m, 0.18 mm ID, 0.18 μm (cat.# 43602)  
**Sample** Tea tree oil  
**Diluent:** Acetone  
**Conc.:** 5%  
**Injection**  
 Inj. Vol.: 1 μL split (split ratio 100:1)  
 Liner: Topaz 4.0 mm ID Precision inlet liner w/wool (cat.# 23305)  
 Inj. Temp.: 250 °C  
**Oven**  
 Oven Temp.: 100 °C (hold 0.25 min) to 320 °C at 17.5 °C/min (hold 10 min)  
**Carrier Gas** He, constant flow  
**Flow Rate:** 1.01 mL/min  
**Detector** MS  
**Mode:** Scan  
**Scan Program:**

Group	Start Time (min)	Scan Range (amu)	Scan Rate (scans/sec)
1	1.00	35-500	5

**Transfer Line Temp.:** 300 °C  
**Analyzer Type:** Quadrupole  
**Source Type:** Inert  
**Source Temp.:** 230 °C  
**Quad Temp.:** 150 °C  
**Instrument** Agilent 7890A GC & 5975C MSD  
**Notes** All peaks were identified using the NIST MS EI spectra library (2005).