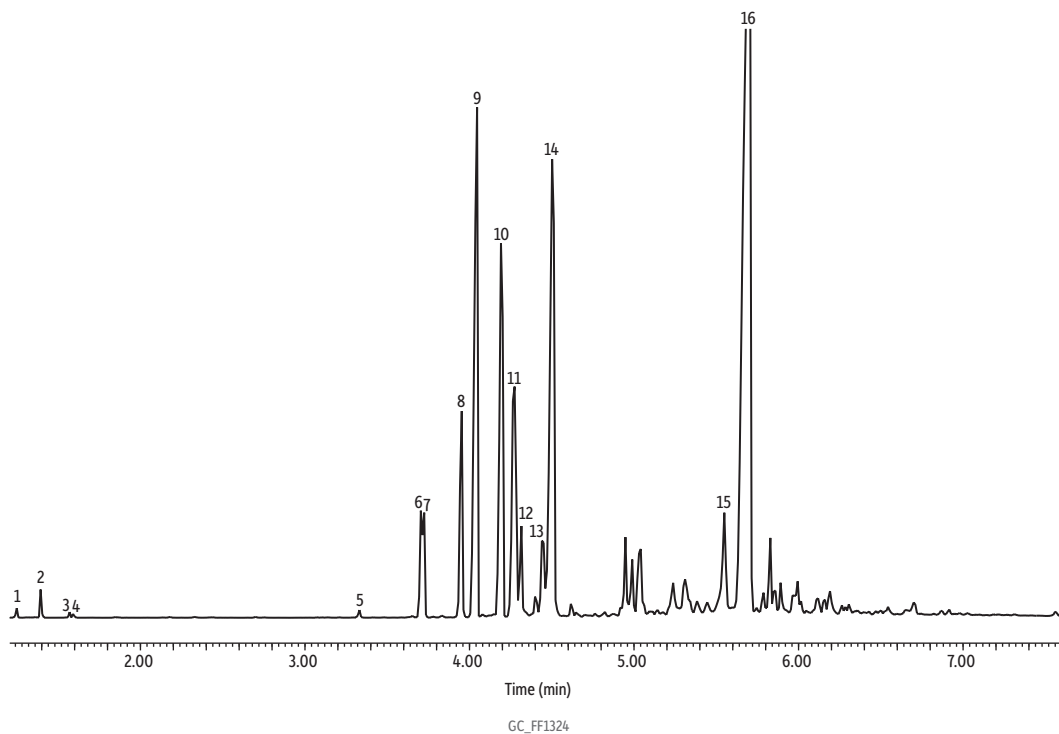


Patchouli Oil on Rxi-5Sil MS (20 m, 0.18 mm ID, 0.18 µm)



Peaks	tr (min)	Peaks	tr (min)
1. α-Pinene	1.248	9. α-Guaiene	4.047
2. β-Pinene	1.399	10. Seychellene	4.198
3. D-Limonene	1.569	11. α-Patchoulene	4.275
4. Eucalyptol	1.590	12. Patchoulene	4.318
5. δ-Elemene	3.331	13. Cedrene	4.450
6. β-Elemene	3.704	14. δ-Guaiene	4.509
7. β-Patchoulene	3.725	15. Valencene	5.553
8. Caryophyllene	3.955	16. Patchoulol	5.700

Column Rxi-5Sil MS, 20 m, 0.18 mm ID, 0.18 µm (cat.# 43602)
Sample Patchouli oil
Diluent: Acetone
Conc.: 5%
Injection
Inj. Vol.: 1 µL split (split ratio 100:1)
Liner: Topaz 4.0 mm ID Precision inlet liner w/wool (cat.# 23305)
Inj. Temp.: 250 °C
Oven
Oven Temp.: 100 °C (hold 0.25 min) to 320 °C at 17.5 °C/min (hold 10 min)
Carrier Gas He, constant flow
Flow Rate: 1.01 mL/min
Detector MS
Mode: Scan
Scan Program:

Group	Start Time (min)	Scan Range (amu)	Scan Rate (scans/sec)
1	1.00	35-500	5

Transfer Line Temp.: 300 °C
Analyzer Type: Quadrupole
Source Type: Inert
Source Temp.: 230 °C
Quad Temp.: 150 °C
Instrument Agilent 7890A GC & 5975C MSD
Notes All peaks were identified using the NIST MS EI spectra library (2005).