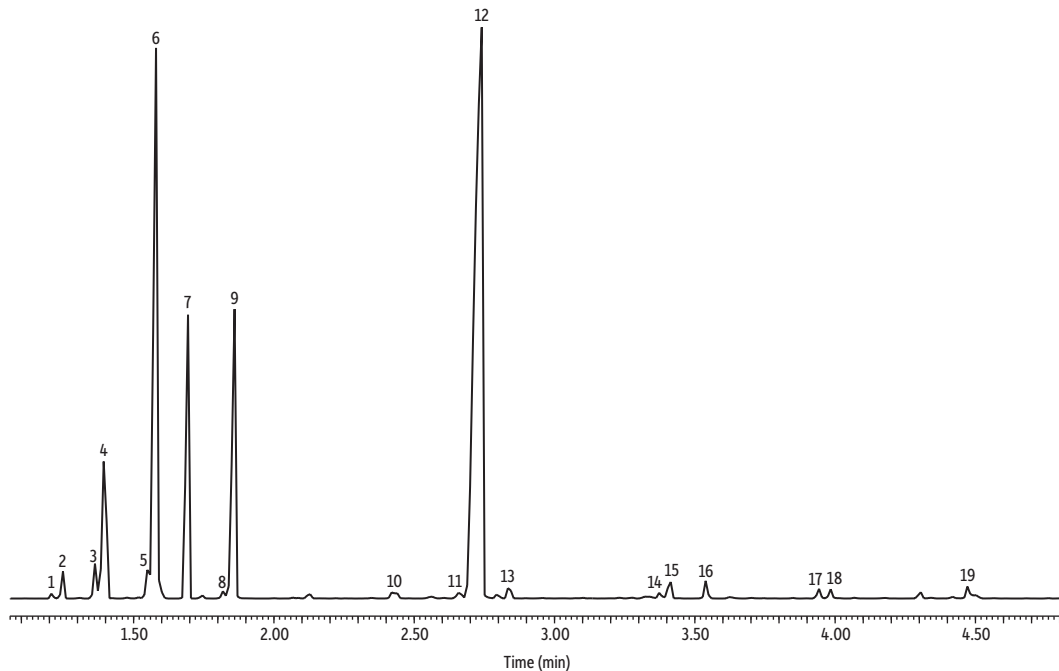


# Bergamot Oil on Rxi-5Sil MS (20 m, 0.18 mm ID, 0.18 µm)



GC\_FF1321

Peaks	Retention Time (min)	Peaks	Retention Time (min)
1. α-Thujene	1.212	10. α-Terpineol	2.419
2. α-Pinene	1.253	11. Z-Citral	2.66
3. Sabinene	1.362	12. Bergamol	2.738
4. β-Pinene	1.395	13. E-Citral	2.834
5. p-Cymene	1.549	14. 2-Carene	3.373
6. D-Limonene	1.578	15. Neryl acetate	3.415
7. γ-Terpinene	1.696	16. Geranyl acetate	3.543
8. Terpinolene	1.818	17. Caryophyllene	3.947
9. Linalool	1.858	18. α-Bergamotene	3.989
		19. β-Bisabolene	4.476

**Column** Rxi-5Sil MS, 20 m, 0.18 mm ID, 0.18 µm (cat.# 43602)  
**Sample** Bergamot oil  
**Diluent:** Acetone  
**Conc.:** 5%  
**Injection**  
**Inj. Vol.:** 1 µL split (split ratio 100:1)  
**Liner:** Topaz 4.0 mm ID Precision inlet liner w/wool (cat.# 23305)  
**Inj. Temp.:** 250 °C  
**Oven**  
**Oven Temp.:** 100 °C (hold 0.25 min) to 320 °C at 17.5 °C/min (hold 10 min)  
**Carrier Gas** He, constant flow  
**Flow Rate:** 1.01 mL/min  
**Detector** MS  
**Mode:** Scan  
**Scan Program:**

Group	Start Time (min)	Scan Range (amu)	Scan Rate (scans/sec)
1	1.00	35-500	5

**Transfer Line Temp.:** 300 °C  
**Analyzer Type:** Quadrupole  
**Source Type:** Inert  
**Source Temp.:** 230 °C  
**Quad Temp.:** 150 °C  
**Instrument** Agilent 7890A GC & 5975C MSD  
**Notes** All peaks were identified using the NIST MS EI spectra library (2005).