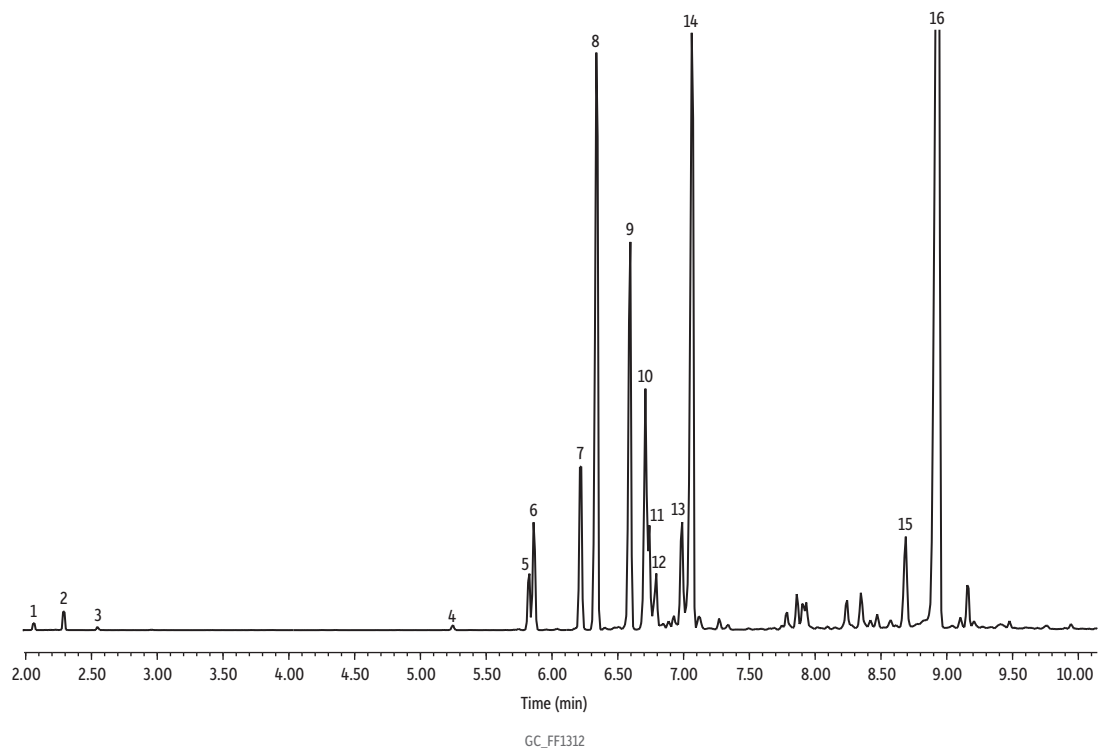


Patchouli Oil on Rxi-5Sil MS



Peaks	tr (min)	Peaks	tr (min)
1. α -Pinene	2.062	9. Seychellene	6.596
2. β -Pinene	2.290	10. α -Patchoulene	6.710
3. D-Limonene	2.545	11. β -Guaiene	6.741
4. δ -Elemene	5.246	12. Patchoulene	6.795
5. β -Elemene	5.829	13. Cedrene	6.991
6. β -Patchoulene	5.867	14. δ -Guaiene	7.069
7. Caryophyllene	6.222	15. Valencene	8.691
8. α -Guaiene	6.344	16. Patchoulol	8.937

Column Rxi-5Sil MS, 30 m, 0.25 mm ID, 0.25 μ m (cat.# 13623)
Sample Patchouli oil
Diluent: Acetone
Conc.: 5%
Injection
Inj. Vol.: 1 μ L split (split ratio 100:1)
Liner: Topaz 4.0 mm ID Precision inlet liner w/wool (cat.# 23305)
Inj. Temp.: 250 °C
Oven
Oven Temp.: 100 °C to 300 °C at 11 °C/min (hold 10 min)
Carrier Gas He, constant flow
Flow Rate: 1.31 mL/min
Detector MS
Mode: Scan
Scan Program:

Group	Start Time (min)	Scan Range (amu)	Scan Rate (scans/sec)
1	1.00	35-500	5

Transfer Line Temp.: 300 °C
Analyzer Type: Quadrupole
Source Type: Inert
Source Temp.: 230 °C
Quad Temp.: 150 °C

Instrument Agilent 7890A GC & 5975C MSD
Notes All peaks were identified using the NIST MS EI spectra library (2005).