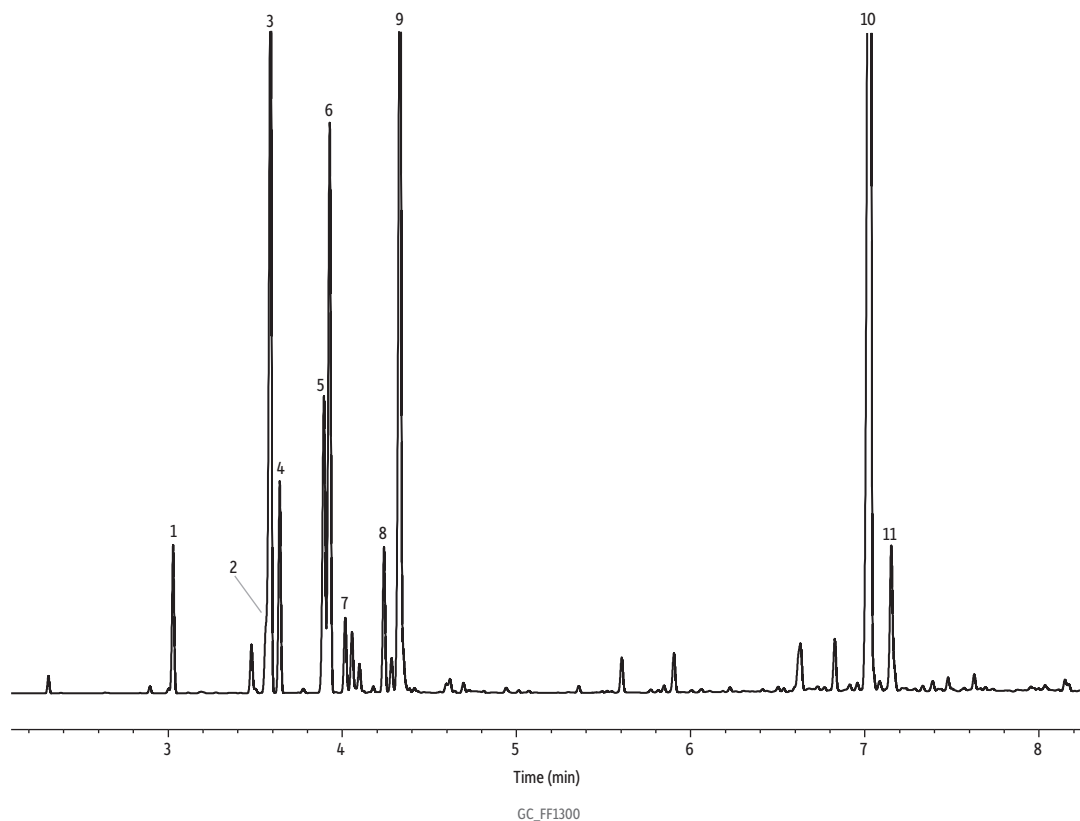


Patchouli Oil on Rtx-Wax



Peaks	ts (min)
1. β -Patchoulene	3.029
2. β -Elemene	3.563
3. α -Guaiene	3.589
4. Caryophyllene	3.642
5. α -Patchoulene	3.895
6. Seychellene	3.929
7. α -Gurjunene	4.017
8. β -Guaiene	4.240
9. δ -Guaiene	4.333
10. Patchoulol	7.031
11. Selinadiene	7.152

Column Rtx-Wax, 30 m, 0.32 mm ID, 0.25 μ m (cat.# 12424)
Sample Patchouli oil
Diluent: Acetone
Conc.: 5%
Injection
Inj. Vol.: 1 μ L split (split ratio 100:1)
Liner: Topaz 4.0 mm ID Precision inlet liner w/wool (cat.# 23305)
Inj. Temp.: 230 $^{\circ}$ C
Oven
Oven Temp.: 100 $^{\circ}$ C (hold 0.5 min) to 250 $^{\circ}$ C at 16 $^{\circ}$ C/min (hold 10 min)
Carrier Gas H₂, constant flow
Flow Rate: 2 mL/min
Detector FID @ 250 $^{\circ}$ C
Constant Column +
Constant Make-up: 52 mL/min
Make-up Gas Type: N₂
Hydrogen flow: 40 mL/min
Air flow: 400 mL/min
Data Rate: 50 Hz
Instrument Agilent 7890A GC
Notes All peaks were identified using the NIST MS EI spectra library (2005).