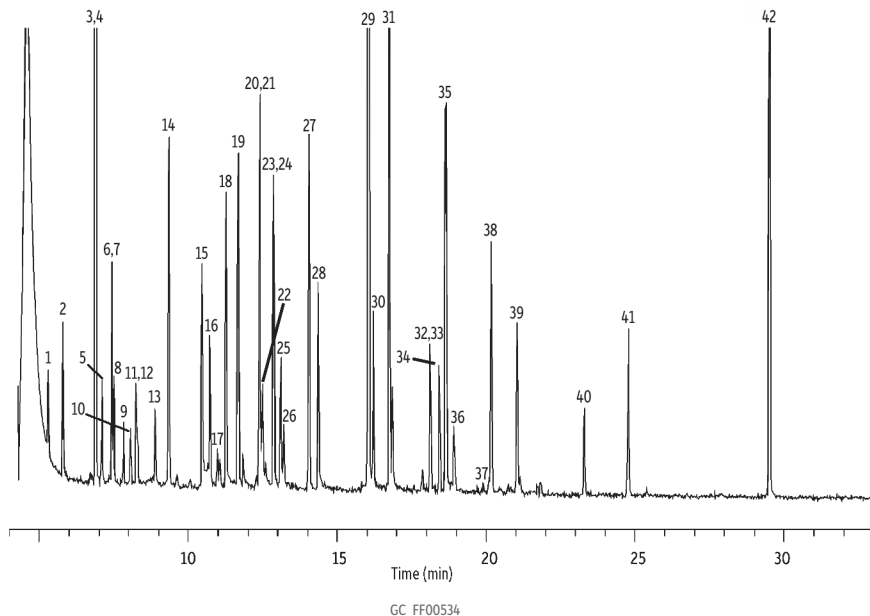


# Synthetic Essential Oil Mixture on Rtx-1



## Peaks

1. Ethyl butyrate
2. *trans*-2-Hexenol
3.  $\alpha$ -Pinene
4. Benzaldehyde
5. Camphene
6. Octanol
7.  $\beta$ -Myrcene
8.  $\beta$ -Pinene
9.  $\alpha$ -Phellandrene
10. *p*-Cymene
11. L-Limonene
12. Camphor
13. *trans*-Sabinene hydrate
14. Linalool
15. Citronellal
16. l-Menthone
17. Menthofuran
18. l-Menthol
19.  $\alpha$ -Terpineol
20. Linalyl acetate
21.  $\beta$ -Citronellol

## Peaks

22. Nerol
23. Carveol
24. Anisaldehyde
25. Carvone
26. Geraniol
27. Anethole
28. Cinnamic alcohol
29. Eugenol
30. Neryl acetate
31. Geranyl acetate
32. Vanillin
33. Coumarin
34.  $\alpha$ -Ionone
35. Ethyl vanillin
36.  $\beta$ -Caryophyllene
37.  $\alpha$ -Caryophyllene
38.  $\beta$ -Ionone
39. Valencene
40. Ethyl laurate
41. Amyl cinnamic aldehyde
42. Nootketone

## Column Injection

Rtx-1, 60 m, 0.25 mm ID, 0.25  $\mu$ m (cat.# 10126)  
 Inj. Vol.: 1  $\mu$ L split  
 Inj. Temp.: 250 °C  
 Split Vent Flow Rate: 100 mL/min

## Oven

Oven Temp.: 100 °C to 260 °C at 4 °C/min (hold 1 min)

## Carrier Gas

He, constant linear velocity

Linear Velocity: 30 cm/sec @ 50 °C

## Detector

MS

Mode: Scan

Source Temp.: 280 °C

