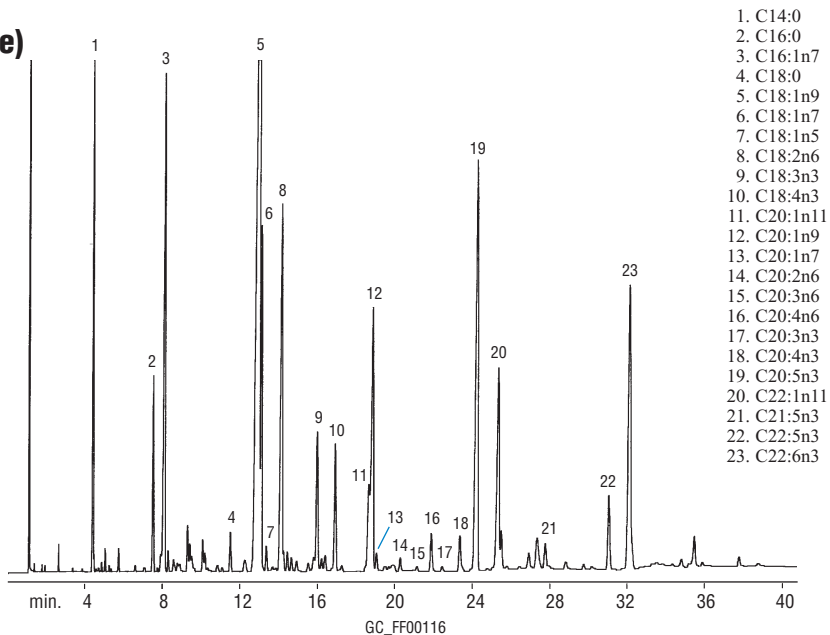


FAMES
PUFA (marine source)
MXT®-WAX
(split injection)



1. C14:0
2. C16:0
3. C16:1n7
4. C18:0
5. C18:1n9
6. C18:1n7
7. C18:1n5
8. C18:2n6
9. C18:3n3
10. C18:4n3
11. C20:1n11
12. C20:1n9
13. C20:1n7
14. C20:2n6
15. C20:3n6
16. C20:4n6
17. C20:3n3
18. C20:4n3
19. C20:5n3
20. C22:1n11
21. C21:5n3
22. C22:5n3
23. C22:6n3

30m, 0.28mm ID, 0.25µm MXT®-WAX (cat.# 70624)
0.1µL split injection of PUFA 1 mix.

Oven temp.: 160°C to 250°C @ 2°C/min. (hold 10 min.)
Inj. & det. temp.: 260°C
Carrier gas: hydrogen
Linear velocity: 40cm/sec.
FID sensitivity: 8 x 10⁻¹¹ AFS
Split ratio: 40:1