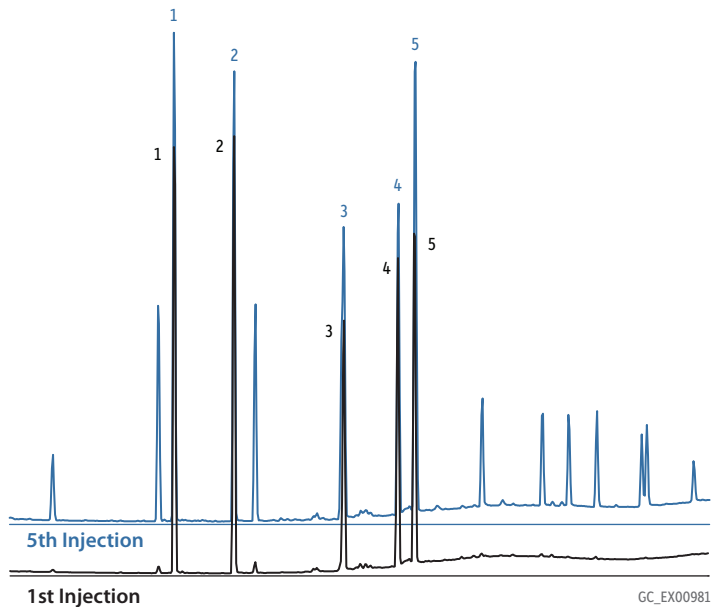


Septum Bleed Causing Significant Interference with Target Analytes



Peaks

1. Amphetamine
2. Methamphetamine
3. MDA
4. MDMA
5. MDEA

Column Sample

Rtx-5MS, 30 m, 0.25 mm ID, 0.25 μ m (cat.# 12623)
Amphetamine, methamphetamine, MDA, MDMA, and MDEA extracted
from methanol and HFAA derivatized
Conc.:
100 μ g/mL each

Injection

Inj. Vol.: 1 μ L splitless (hold 0.5 min)
Liner: 3.75 mm Custom splitless inlet liner w/ standard deactivated wool
Inj. Temp.: 220 $^{\circ}$ C

Oven

Oven Temp.: 70 $^{\circ}$ C (hold 1 min) to 290 $^{\circ}$ C at 15 $^{\circ}$ C/min (hold 4 min)

Carrier Gas

He, constant flow

Flow Rate: 1.25 mL/min

Detector

MS

Mode: Scan

Transfer Line

Temp.: 280 $^{\circ}$ C

Ionization Mode: EI

Scan Range: 43-450 amu