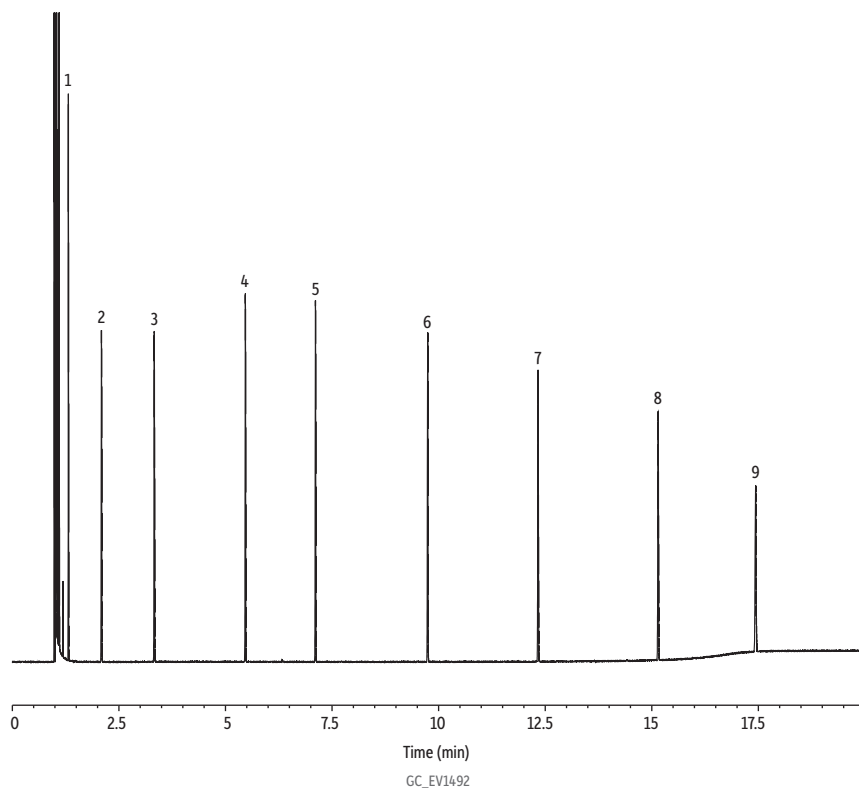


TNRCC 1006 Retention Time Marker Mix on Rxi-5Sil MS

- Separation of C5 (solvent) and C6.



Column Rxi-5Sil MS, 30 m, 0.25 mm ID, 0.25 μ m (cat.# 13623)
Sample TNRCC 1006 retention time marker mix (cat.# 31814)
Injection
 Inj. Vol.: 1 μ L split (split ratio 50:1)
 Liner: Topaz 4 mm ID Precision inlet liner w/ wool (cat.# 23305)
 Inj. Temp.: 300 °C
Oven
 Oven Temp.: 35 °C (hold 2 min) to 330 °C at 20 °C/min (hold 5 min)
Carrier Gas He, constant flow
Flow Rate: 4 mL/min
Detector FID @ 340 °C
Make-up Gas
 Flow Rate: 45 mL/min
Make-up Gas
 Type: N₂
Hydrogen flow: 40 mL/min
Air flow: 450 mL/min
Data Rate: 50 Hz
Instrument Agilent 7890B GC

Peaks	tr (min)	Conc. (μ g/mL)
1. <i>n</i> -Hexane	1.31	200
2. <i>n</i> -Heptane	2.09	200
3. <i>n</i> -Octane	3.32	200
4. <i>n</i> -Decane	5.46	200
5. <i>n</i> -Dodecane	7.11	200
6. <i>n</i> -Hexadecane	9.74	200
7. <i>n</i> -Heneicosane	12.33	200
8. <i>n</i> -Octacosane	15.14	200
9. <i>n</i> -Pentatriacontane	17.43	200