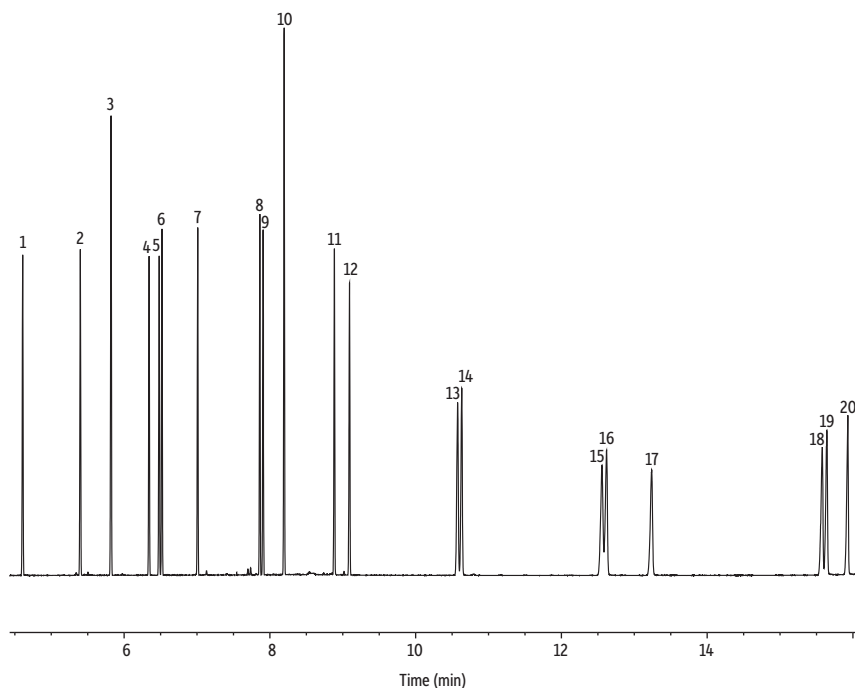


# MA DEP EPH Aromatics on Rxi-5Sil MS by Split Injection

- Fast analysis time.
- Split injection.



GC\_EV1487

**Column** Rxi-5Sil MS, 30 m, 0.25 mm ID, 0.25  $\mu$ m (cat.# 13623)  
**Sample** MA EPH aromatic hydrocarbon standard (cat.# 31458)  
 MA fractionation surrogate spike mix (cat.# 31480)  
 o-Terphenyl (cat.# 31097)  
**Diluent:** Methylene chloride  
**Injection**  
 Inj. Vol.: 1  $\mu$ L split (split ratio 10:1)  
 Liner: Topaz 4 mm ID Precision inlet liner w/ wool (cat.# 23305)  
 Inj. Temp.: 300 °C  
**Oven**  
 Oven Temp.: 55 °C (hold 0.5 min) to 150 °C at 20 °C/min to 250 °C at 30 °C/min to 280 °C at 5 °C/min to 345 °C at 30 °C/min (hold 3 min)  
**Carrier Gas** He, constant flow  
 Flow Rate: 4 mL/min  
**Detector** FID @ 340 °C  
 Make-up Gas  
 Flow Rate: 45 mL/min  
 Make-up Gas  
 Type: N<sub>2</sub>  
 Hydrogen flow: 40 mL/min  
 Air flow: 450 mL/min  
 Data Rate: 50 Hz  
**Instrument** Agilent 7890A GC

## Peaks

1. Naphthalene
2. 2-Methylnaphthalene
3. 2-Fluorobiphenyl (SS)
4. Acenaphthylene
5. 2-Bromonaphthalene (SS)
6. Acenaphthene
7. Fluorene
8. Phenanthrene
9. Anthracene
10. o-Terphenyl (SS)
11. Fluoranthene
12. Pyrene
13. Benz[a]anthracene
14. Chrysene
15. Benzo[b]fluoranthene
16. Benzo[k]fluoranthene
17. Benzo[a]pyrene
18. Indeno[1,2,3-cd]pyrene
19. Dibenzo[a,h]anthracene
20. Benzo[ghi]perylene

Retention Time (min)	Concentration ( $\mu$ g/mL)
4.60	125
5.39	125
5.82	200
6.34	125
6.48	200
6.51	125
7.01	125
7.86	125
7.90	125
8.19	200
8.88	125
9.09	125
10.57	125
10.63	125
12.55	125
12.61	125
13.23	125
15.57	125
15.64	125
15.93	125