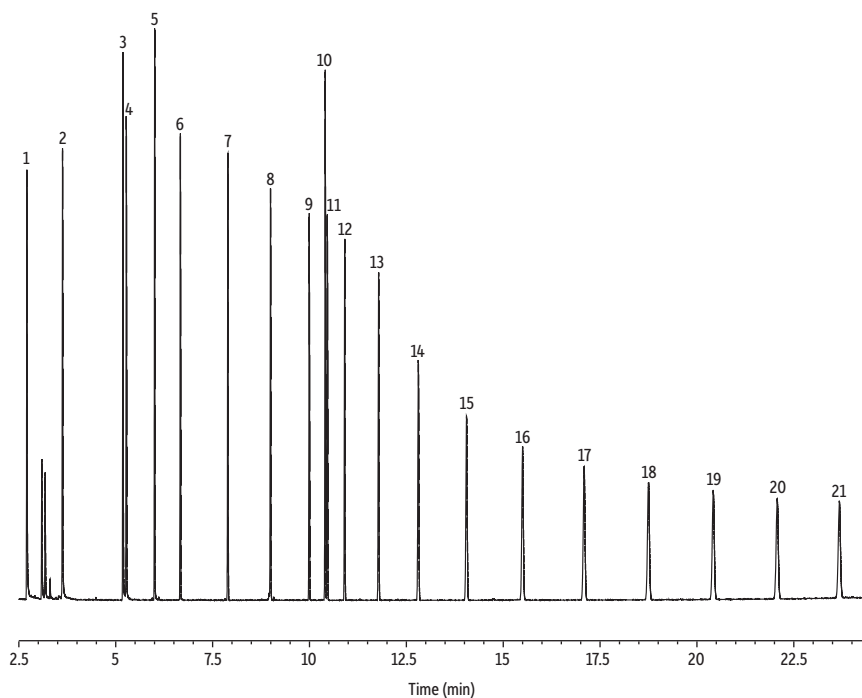


# NJ DEP EPH Aliphatics on Rxi-5Sil MS

- Fast analysis time.



GC\_EV1485

**Column** Rxi-5Sil MS, 30 m, 0.32 mm ID, 0.25 µm (cat.# 13624)  
**Sample** NJ DEP EPH 10/08 rev. 2 aliphatics calibration standard (cat.# 30540)  
 1-Chlorooctadecane (cat.# 31098)  
**Diluent:** Hexane

**Injection**  
**Inj. Vol.:** 1 µL splitless  
**Liner:** Topaz 4 mm ID single taper w/ wool (cat.# 23303)  
**Inj. Temp.:** 300 °C  
**Oven**  
**Oven Temp.:** 55 °C (hold 1.5 min) to 250 °C at 20 °C/min to 330 °C at 6 °C/min (hold 2.0 min)

**Carrier Gas** He, constant flow  
**Flow Rate:** 5 mL/min  
**Detector** FID @ 340 °C

**Make-up Gas**  
**Flow Rate:** 45 mL/min  
**Make-up Gas**  
**Type:** H<sub>2</sub>  
**Hydrogen flow:** 40 mL/min  
**Air flow:** 450 mL/min  
**Data Rate:** 50 Hz  
**Instrument** Agilent 7890A GC

Peaks	ts (min)	Conc. (µg/mL)
1. <i>n</i> -Nonane	2.70	12.5
2. Decane	3.62	12.5
3. Naphthalene	5.18	12.5
4. <i>n</i> -Dodecane	5.27	12.5
5. 2-Methylnaphthalene	6.00	12.5
6. <i>n</i> -Tetradecane	6.66	12.5
7. Hexadecane	7.89	12.5
8. <i>n</i> -Octadecane	8.99	12.5
9. Eicosane	9.99	12.5
10. 1-Chlorooctadecane (SS)	10.40	20.0
11. <i>n</i> -Heneicosane	10.46	12.5
12. Docosane	10.90	12.5
13. <i>n</i> -Tetracosane	11.78	12.5
14. <i>n</i> -Hexacosane	12.80	12.5
15. Octacosane	14.05	12.5
16. Triacontane	15.49	12.5
17. Dotriacontane	17.08	12.5
18. <i>n</i> -Tetraatriacontane	18.74	12.5
19. Hexatriacontane	20.42	12.5
20. <i>n</i> -Octatriacontane	22.07	12.5
21. Tetracontane	23.67	12.5