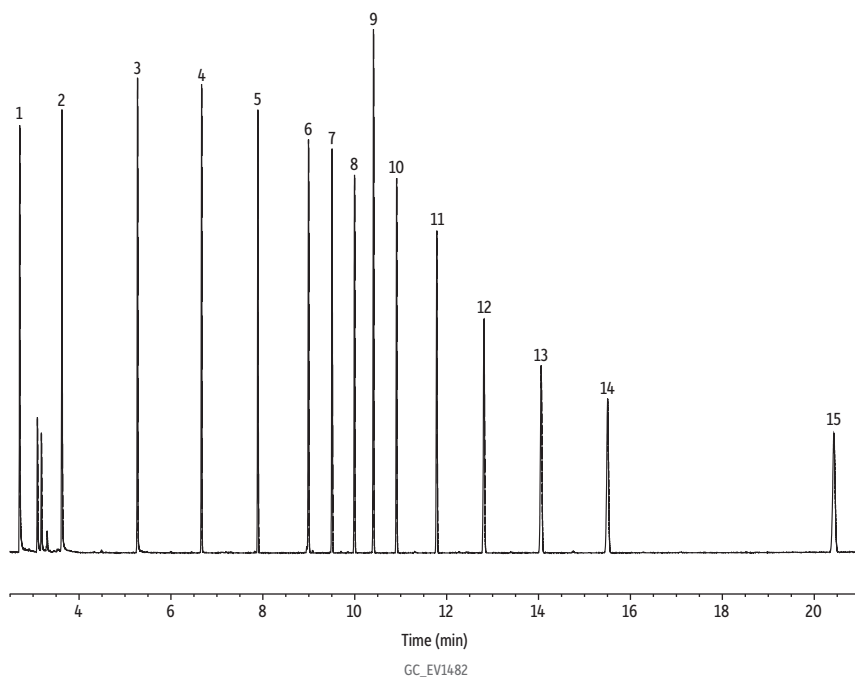


MA DEP EPH Aliphatics on Rxi-5Sil MS

- Fast analysis time.



Column Rxi-5Sil MS, 30 m, 0.32 mm ID, 0.25 μ m (cat.# 13624)
Sample MA EPH aliphatic hydrocarbon standard (cat.# 31459)
 1-Chlorooctadecane (cat.# 31098)
Diluent: Hexane
Injection
 Inj. Vol.: 1 μ L splitless
 Liner: Topaz 4 mm ID single taper inlet liner w/ wool (cat.# 23303)
 Inj. Temp.: 300 °C
Oven
 Oven Temp.: 55 °C (hold 1.5 min) to 250 °C at 20 °C/min to 330 °C at 6 °C/min (hold 2.0 min)
Carrier Gas He, constant flow
 Flow Rate: 5 mL/min
Detector FID @ 340 °C
 Make-up Gas
 Flow Rate: 45 mL/min
 Make-up Gas
 Type: Hz
 Hydrogen flow: 40 mL/min
 Air flow: 450 mL/min
 Data Rate: 50 Hz
Instrument Agilent 7890A GC

Peaks

1. Nonane
2. *n*-Decane
3. *n*-Dodecane
4. *n*-Tetradecane
5. *n*-Hexadecane
6. *n*-Octadecane
7. *n*-Nonadecane
8. *n*-Eicosane
9. 1-Chlorooctadecane (SS)
10. *n*-Docosane
11. *n*-Tetracosane
12. *n*-Hexacosane
13. *n*-Octacosane
14. *n*-triacontane
15. *n*-Hexatriacontane

tr (min)	Conc. (μg/mL)
2.70	12.5
3.62	12.5
5.27	12.5
6.66	12.5
7.89	12.5
8.99	12.5
9.50	12.5
9.99	12.5
10.40	20.0
10.90	12.5
11.78	12.5
12.81	12.5
14.05	12.5
15.50	12.5
20.42	12.5