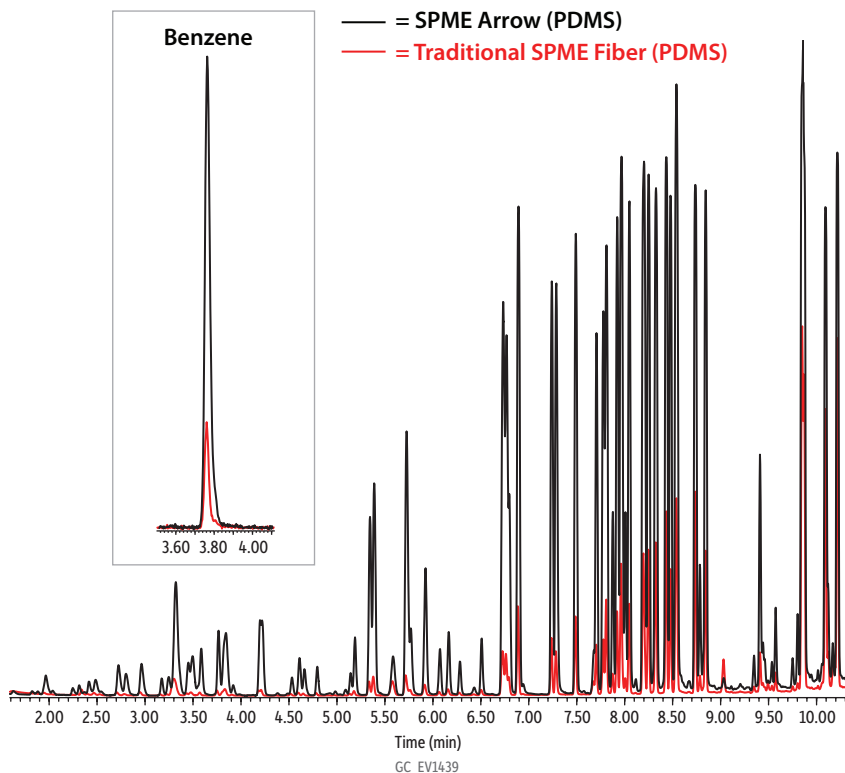


SPME Arrow vs. Traditional SPME Fiber



Column Rtx-VMS, 20 m, 0.18 mm ID, 1.00 μ m (cat.# 49914)
Sample 2-Chloroethyl vinyl ether (cat.# 30265)
 8260 MegaMix calibration mix (cat.# 30633)
 8260 Surrogate mix (cat.# 30073)
 VOA calibration mix #1 (ketones) (cat.# 30006)
 California oxygenates mix (cat.# 30465)
 502.2 Calibration mix #1 (gases) (cat.# 30042)
 8260 Internal standard mix (cat.# 30074)

Diluent: Water
Conc.: 50 ng/mL
Injection split (split ratio 10:1)
Liner: Topaz 1.8 mm ID straight/SPME inlet liner (cat.# 23280.1)
Inj. Temp.: 250 °C

Oven
Oven Temp.: 40 °C to 240 °C at 60 °C/min
Carrier Gas He, constant flow
Flow Rate: 1.0 mL/min
Linear Velocity: 44.411 cm/sec @ 40 °C

Detector MS
Mode: Scan
Scan Program:

Group	Start Time (min)	Scan Range (amu)	Scan Rate (scans/sec)
1	0	35-226	12.1

Transfer Line Temp.: 250 °C
Analyzer Type: Quadrupole
Source Type: Extractor
Extractor Lens: 3 mm ID
Source Temp.: 300 °C
Quad Temp.: 150 °C
Electron Energy: 70.0 eV
Tune Type: manual
Ionization Mode: EI
Instrument Agilent 7890B GC & 5977A MSD
Acknowledgement CTC Analytics AG