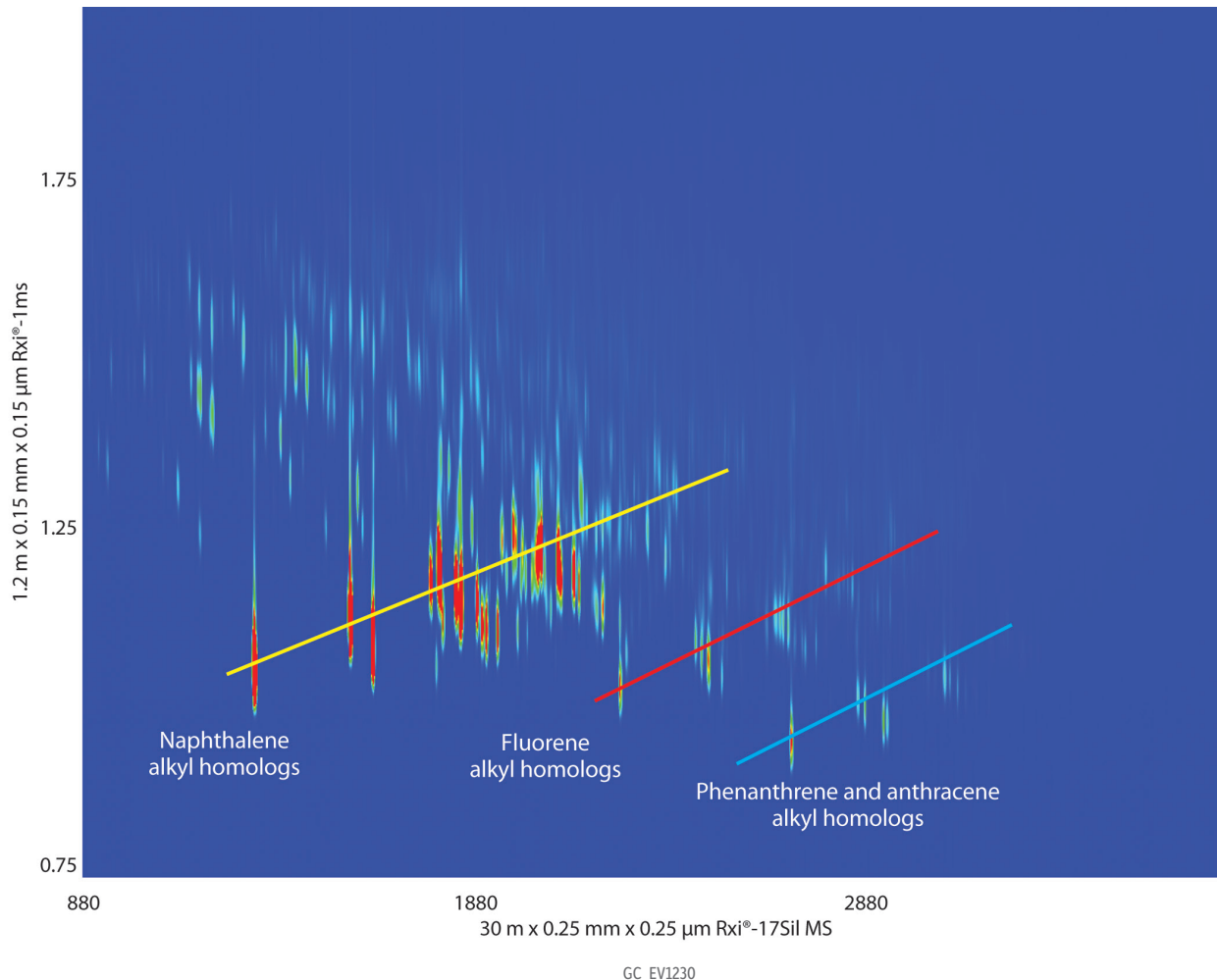


## GCxGC Contour Plot of Riser Pipe Oil in 2010 Gulf Oil Spill (Rxi®-17Sil MS and Rxi®-1ms)



<b>Column</b>	Rxi®-17Sil MS 30 m, 0.25 mm ID, 0.25 µm (cat.# 14123) Rxi®-1ms 1.2 m, 0.15 mm ID, 0.15 µm (cat.# 43800)	<b>Detector</b>	TOFMS
<b>Sample</b>	Methylene chloride	Transfer Line Temp.:	300 °C
<b>Diluent:</b>		Analyzer Type:	TOF
<b>Injection</b>		Source Temp.:	250 °C
Inj. Vol.:	1 µL splitless (hold 1 min.)	Electron Energy:	70 eV
Liner:	Premium 4mm Single Taper w/Wool (cat.# 23303.1)	Mass Defect:	50 mu/100 u
Inj. Temp.:	250 °C	Solvent Delay Time:	5 min.
Purge Flow:	40 mL/min.	Tune Type:	PFTBA
<b>Oven</b>		Ionization Mode:	EI
Oven Temp.:	Rxi®-17Sil MS: 40 °C (hold 1 min.) to 320 °C at 3.5 °C/min. (hold 4 min.) Rxi®-1ms: 45 °C (hold 1 min.) to 325 °C at 3.5 °C/min. (hold 4 min.)	Acquisition Range:	45-550 amu
<b>Carrier Gas</b>	He, corrected constant flow (2.2 mL/min.)	Spectral Acquisition Rate:	200 spectra/sec
<b>Modulation</b>		<b>Instrument</b>	LECO Pegasus 4D GCxGC-TOFMS
Modulator Temp. Offset:	20 °C	<b>Notes</b>	Rxi®-1ms (cat.# 43800) is a 10 m column. A 1.2 m section was used as the second dimension column.
Second Dimension		<b>Acknowledgement</b>	Dr. Ed Overton, Professor Emeritus at Louisiana State University, for providing the riser pipe oil sample.
Separation Time:	4 sec.		
Hot Pulse Time:	1.4 sec.		
Cool Time between Stages:	0.6 sec.		